

OFFICE FOR LEASE

3555 WILLOW LAKE BLVD, VADNAIS HEIGHTS, MN 55110
2,196 SF

ERSI

ESSENCE REAL ESTATE
SERVICES, INC.



PROPERTY HIGHLIGHTS:

- 2,196 SF AVAILABLE
- IDEAL FOR PROFESSIONAL OFFICE, MEDICAL OR SERVICE
- ATTRACTIVE ENTRANCE AND SPECTACULAR AESTHETIC APPEAL
- PHENOMENAL GLASS LINES
- GREAT ACCESS TO I35E & I694
- MANY AREA AMENITIES INCLUDING: TARGET, WALMART, FRESH THYME, HOTELS, RESTAURANTS & MORE

OFFICE NET RENT \$16.50 SF
2022 EST. OP. EXP. \$ 11.49 SF



CONTACT:

WWW.ESSENCEREALESTATE.COM

JEFF NORDNESS

jeff@essencerealestate.com

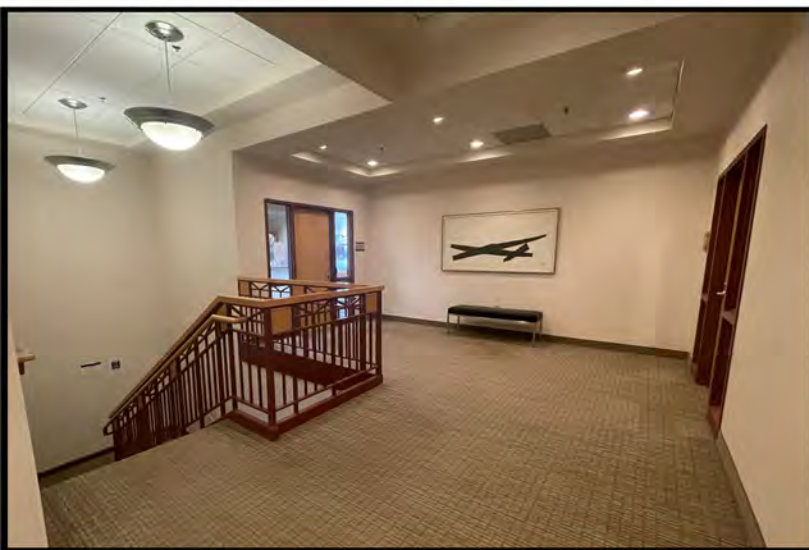
651-341-5044

OFFICE FOR LEASE

3555 WILLOW LAKE BLVD, VADNAIS HEIGHTS, MN 55110
JUST NORTH OF THE 694/35E INTERCHANGE

ERSI

ESSENCE REAL ESTATE
SERVICES, INC.



CONTACT:

WWW.ESSENCEREALESTATE.COM

JEFF NORDNESS

jeff@essencerealestate.com

651-341-5044

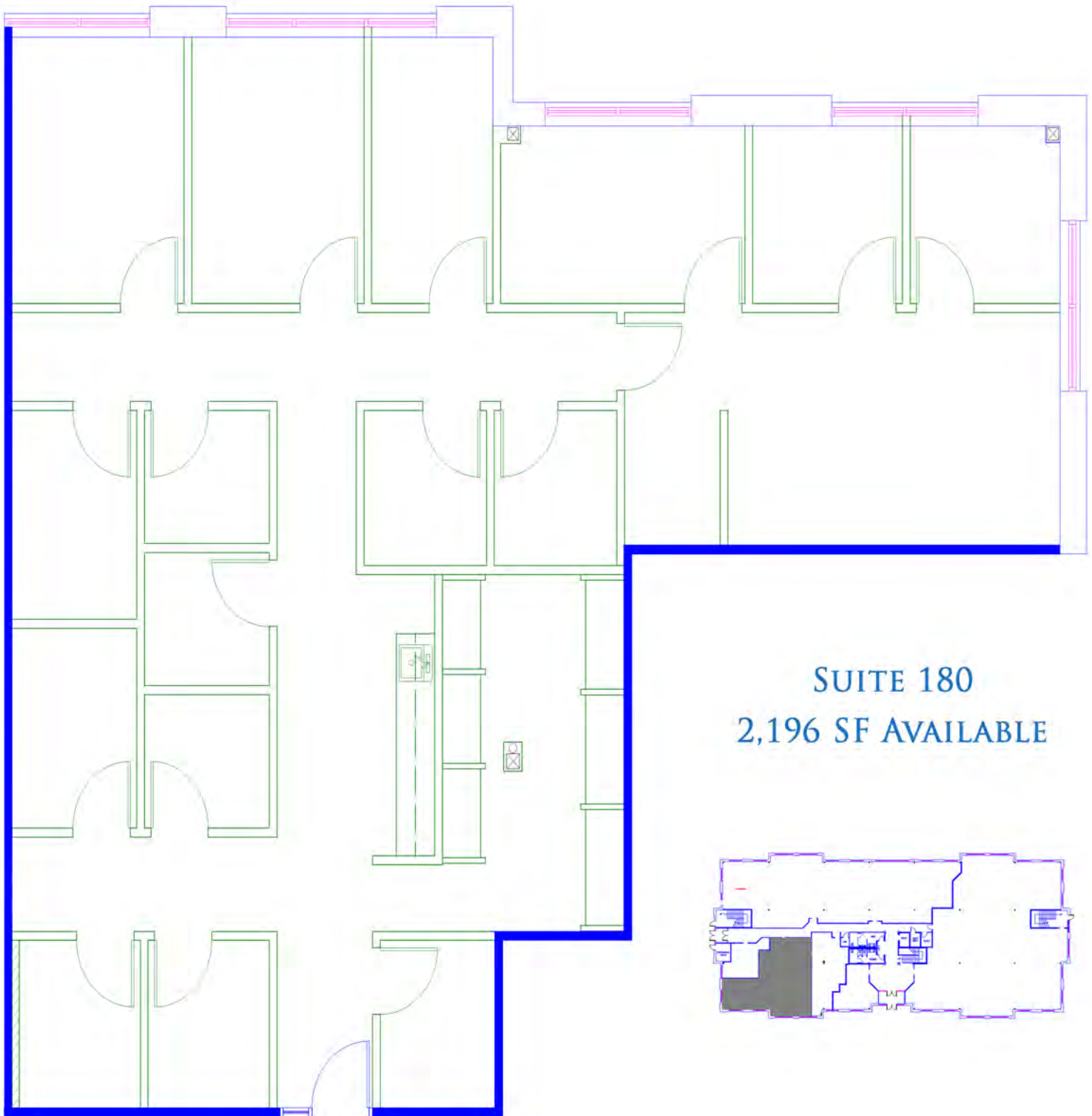
OFFICE FOR LEASE

3555 WILLOW LAKE BLVD, VADNAIS HEIGHTS, MN 55110

2,196 SF

ERSI

ESSENCE REAL ESTATE
SERVICES, INC.



SUITE 180
2,196 SF AVAILABLE

CONTACT:

WWW.ESSENCEREALESTATE.COM

JEFF NORDNESS

jeff@essencerealestate.com

651-341-5044