

OFFICE FOR LEASE

2677 INNSBRUCK DRIVE, NEW BRIGHTON, MN 55112
907 SF

ERSI

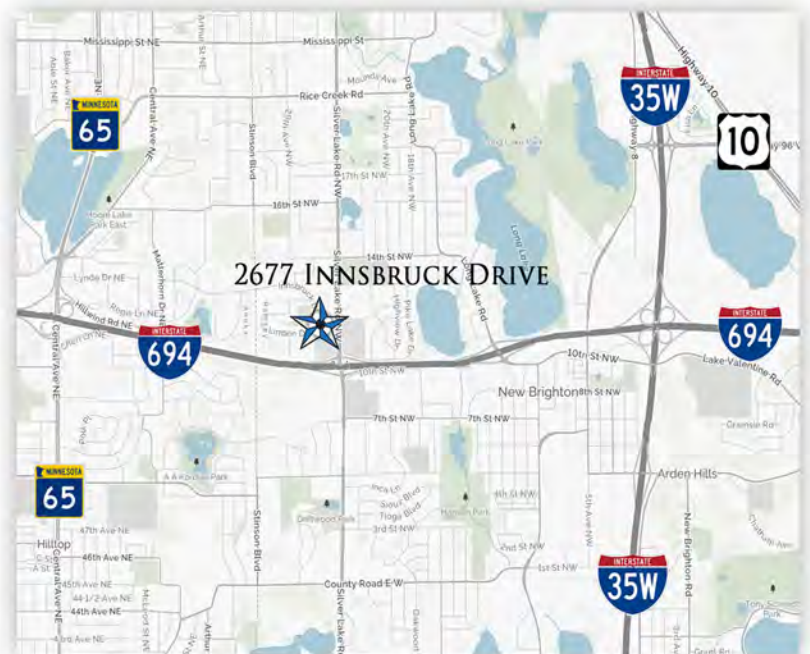
ESSENCE REAL ESTATE
SERVICES, INC.



PROPERTY HIGHLIGHTS:

- 907 SF AVAILABLE
- EXCELLENT SMALL SUITE
- PERFECT FOR MEDICAL OFFICE, OR SERVICE
- SPACE HAS GREAT WINDOWS THAT OPEN
- TERRIFIC ACCESS TO I-694, I-35W
- EXTENSIVE LANDSCAPING
- LOCATED NEAR MN HEALTH CLINIC, WELLS FARGO, ACAPULCO, SUBWAY, LA FITNESS, COWBOY JACKS AND MORE

OFFICE NET RENT \$13.00 SF
2022 EST. OP. EXP. \$ 10.81 SF



CONTACT:

WWW.ESSENCEREALSTATE.COM

JEFF NORDNESS

jeff@essencerealestate.com

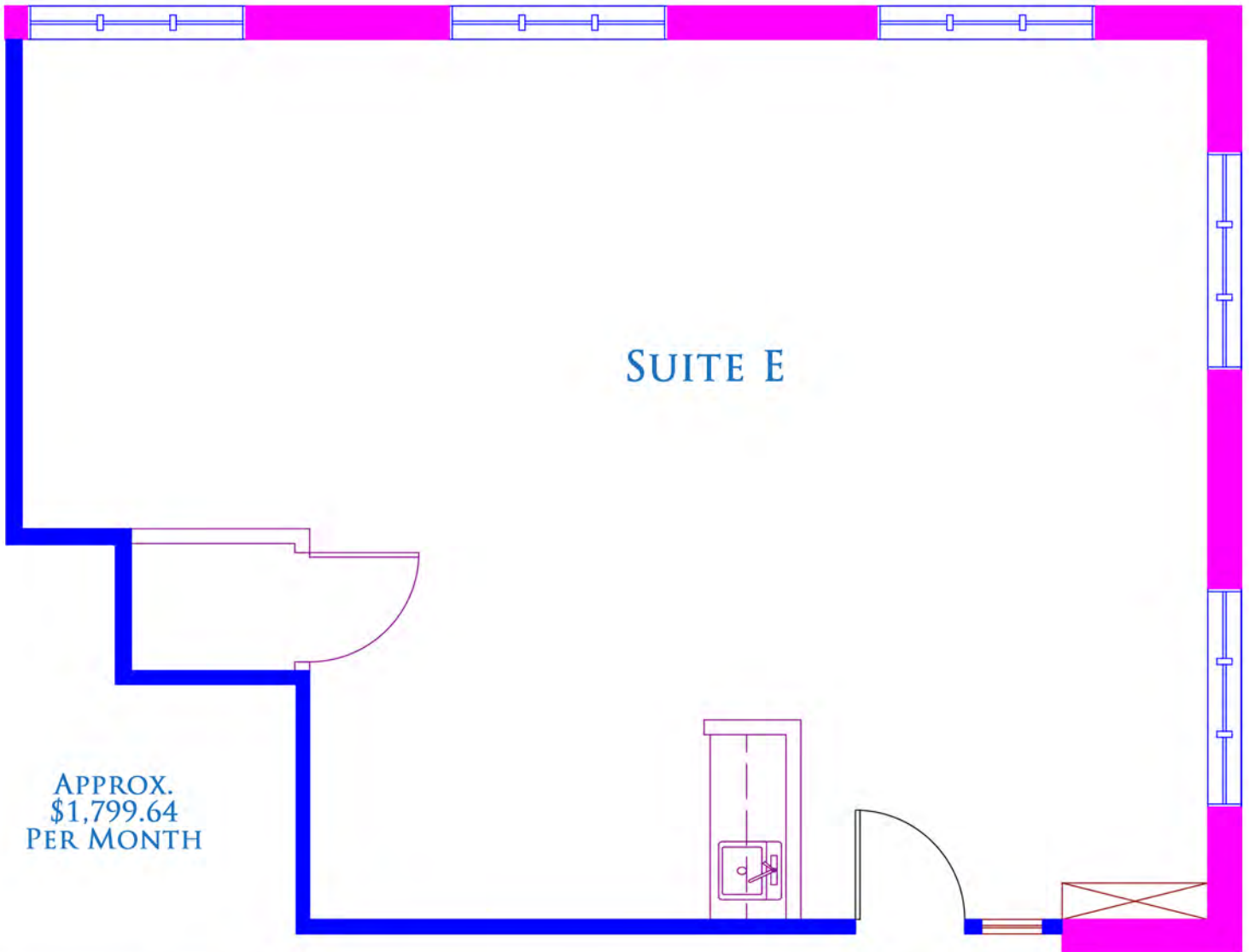
651-341-5044

OFFICE FOR LEASE

2677 INNSBRUCK DRIVE, NEW BRIGHTON, MN 55112
907 SF

ERSI

ESSENCE REAL ESTATE
SERVICES, INC.



CONTACT:

WWW.ESSENCEREALESTATE.COM

JEFF NORDNESS

jeff@essencerealestate.com

651-341-5044