

FOR LEASE

316 South Kalamazoo Avenue, Ste. 110
Kalamazoo, Michigan



DOWNTOWN KALAMAZOO RETAIL/OFFICE SPACE

440 sq. ft. office space in Downtown Kalamazoo. Located just within the doors of Peregrine Plaza, a mixed use building sitting on one of the most prominent corners in downtown. The main floor boasts prime retail and office space, while the second floor features luxury apartments. A busy pedestrian walking area and a highly trafficked intersection creates plenty of visibility for this corner.

The available space is “move in ready” making it a great location for a retail or office user. The light hardwood floors and glass entry make the space feel open and inviting. Positioned in a centralized location, close proximity to multiple restaurants and other shops. Attached heated and secure monthly parking, available in lower level.



AGENT INFORMATION

Gregory DeHaan

Greg@KalamazooCRE.com
269-207-1526

Office:

269-888-2755

501 West Willard Street
Kalamazoo, MI 49007

www.KalamazooCRE.com

FOR LEASE

316 South Kalamazoo Avenue, Ste. 110
Kalamazoo, Michigan

The MANAGEMENT COMPANY

The Peregrine Company offers a variety of spaces desired by discerning individuals, business owners, and organizations. In addition to apartments, Peregrine Company also offers luxurious and well-maintained commercial properties including retail space, office space, and parking.

The SPACE

Suite Number:	110
Size:	440 SF
Lease Rate:	\$22.00 PSF
Lease Type:	Modified Gross
Monthly Lease Rate:	\$790.00
Restrooms:	Private; Shared
Parking:	Street, Available Attached Monthly, Public Ramps Nearby
Signage:	Available



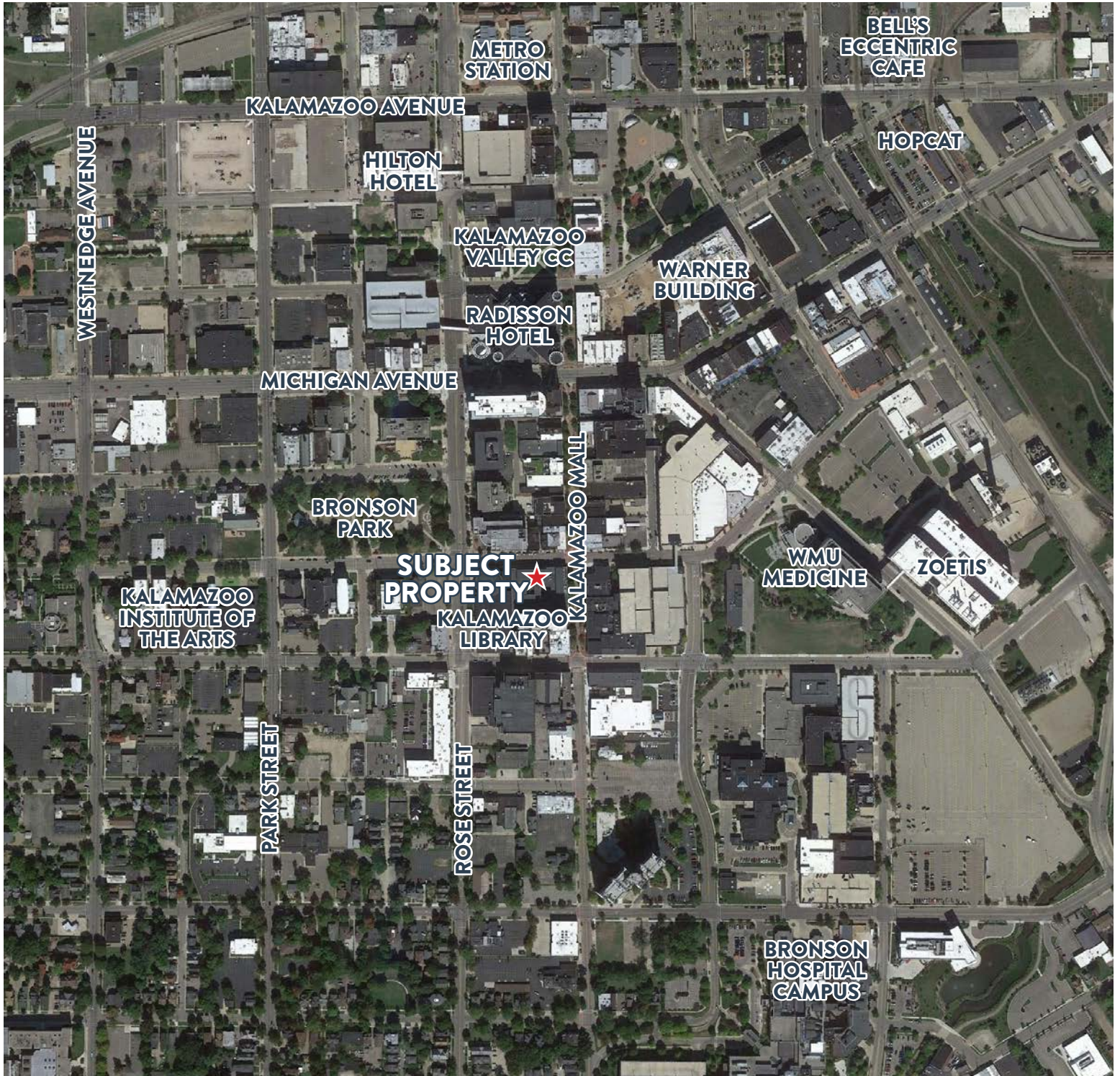
The PROPERTY

Location:	316 S Kalamazoo Mall, Suite #110
City, State:	Kalamazoo, Michigan
Zoning:	City of Kalamazoo; CCBD
Parcel Number:	06-15-390-210
Acres:	0.742



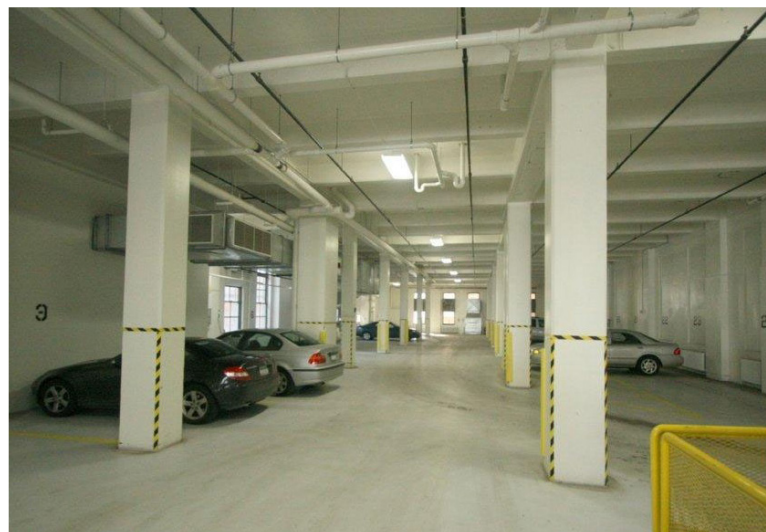
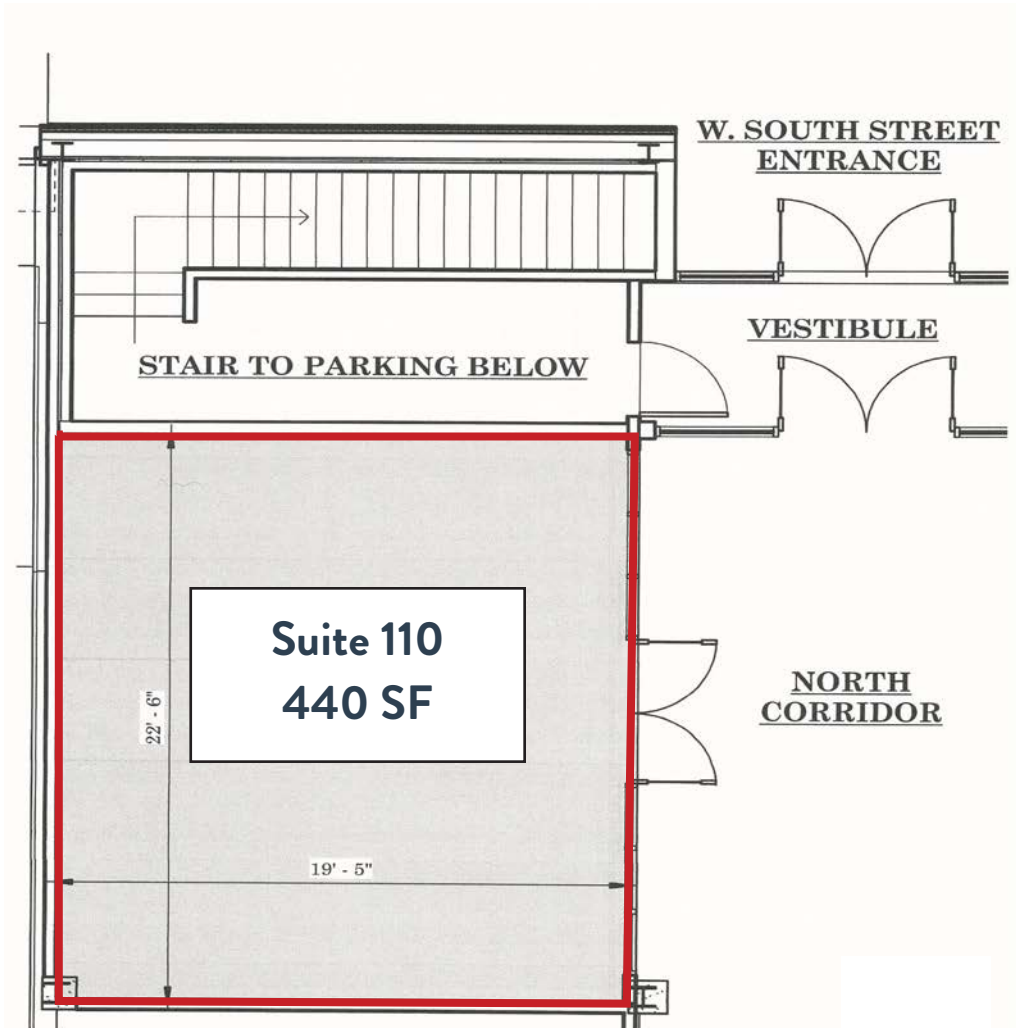
FOR LEASE

316 South Kalamazoo Avenue, Ste. 110
Kalamazoo, Michigan



FOR LEASE

316 South Kalamazoo Avenue, Ste. 110
Kalamazoo, Michigan



FOR LEASE
316 South Kalamazoo Avenue, Ste. 110
Kalamazoo, Michigan

