

1.37 Acres – South End Development Land



- 1.37 Acres
- Zoned TOD-UC
- Located in the South End
- Tax Parcel No. 073-093-06
- Includes a 24,000 SF building with Tenants
- South Tryon Street and Winona Street 2014 traffic count: 14,000 VPD
- Easy walking distance to Bland Street Light Rail Station (LYNX)
- Call for pricing

**1426 South Tryon St.
Charlotte, NC**

PROPERTIES SOUTH LLC

David G. Van Hellemont

Office: 704-443-9022

dave@propsouth.com • www.propsouth.com

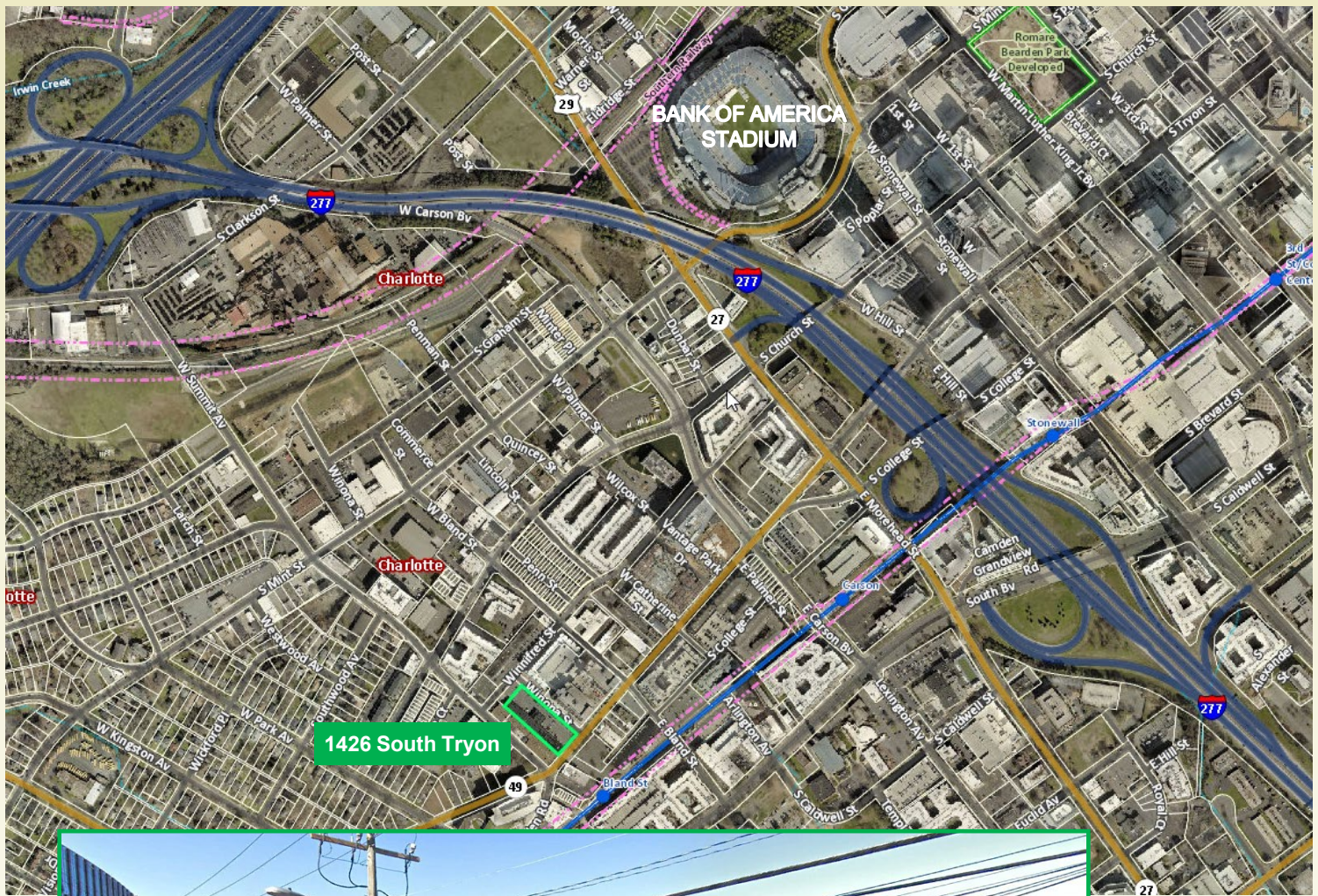
7330 Westcott Terrace, Charlotte, NC 28270

www.propsouth.com

704-443-9022

Every effort has been made to ensure the accuracy of the information presented but no liability is assumed for errors or omissions. This offering is subject to prior sale, lease, change or withdrawal without prior notice and approval of owner.

1.37 Acres – South End Development Land



 **PROPERTIES SOUTH LLC**

David G. Van Hellemont

Office: 704-443-9022

dave@propsouth.com • www.propsouth.com

7330 Westcott Terrace, Charlotte, NC 28270

www.propsouth.com

704-443-9022

Every effort has been made to ensure the accuracy of the information presented but no liability is assumed for errors or omissions. This offering is subject to prior sale, lease, change or withdrawal without prior notice and approval of owner.