

SUB-LEASE



SIMPLIFIED COMMUNICATIONS

2815 SOUTH WAYZATA BLVD., MINNEAPOLIS, MN 55405

SUB-LEASE RATES:

GROSS RENT \$ 3,500.00 A MONTH
UTILITIES INCLUDED

- 1,876 SF AVAILABLE, SINGLE POINT ENTRY
- SUB-LEASE EXPIRES JUNE 30, 2022
- SIGNAGE AVAILABLE W/ 394 VISIBILITY
- TWO STORY BUILDING, AVAILBLE SPACE
- LOCATED ON FIRST LEVEL
- SURFACE PARKING
- UNIQUE/MODERN OFFICE SPACE
- LOCATED OFF 394 JUST MINUTES FROM DOWNTOWN MINNEAPOLIS



VISIBILITY FROM 394 OFF PENN AVENUE

JEFF SALZBRUN
jeffsalzbrun@gmail.com

612-788-1552

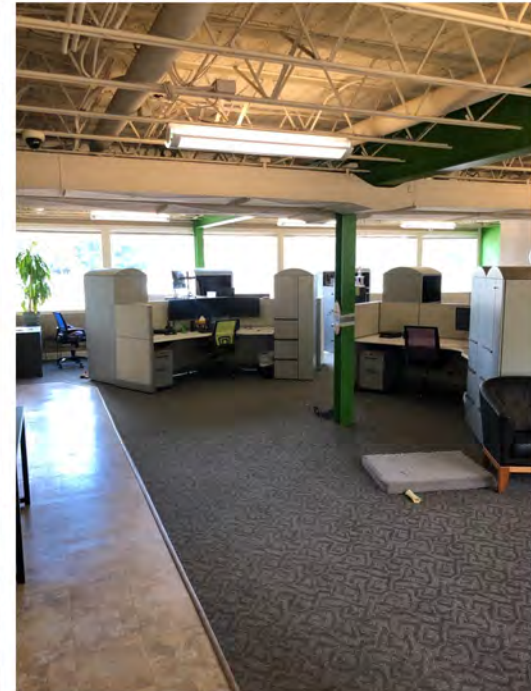
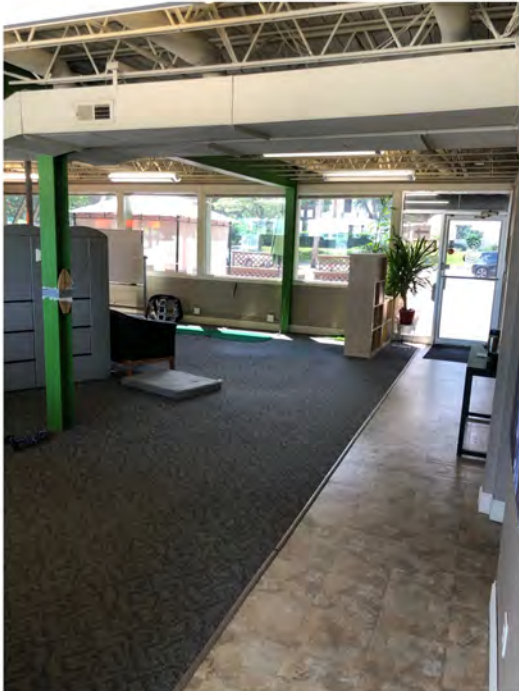
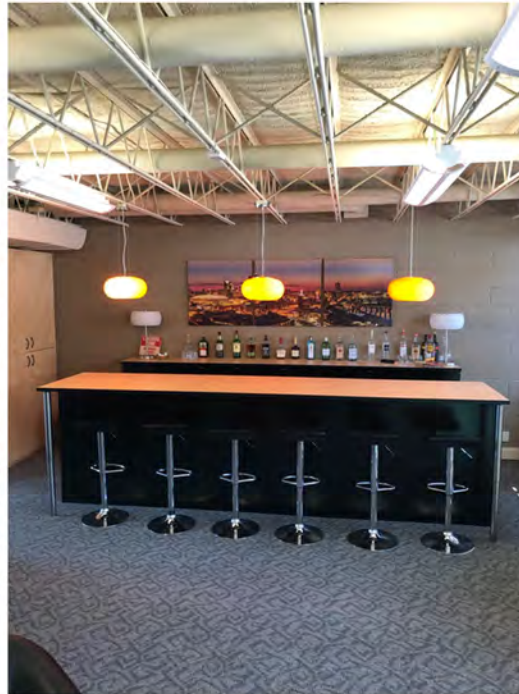
ERSI

COMMERCIAL REAL ESTATE SINCE 1990

ESSENCE
REAL ESTATE
SERVICES INC.

SIMPLIFIED COMMUNICATIONS

2815 SOUTH WAYZATA BLVD., MINNEAPOLIS, MN 55405



GREAT OFFICE SPACE FOR YOUR BUSINESS

JEFF SALZBRUN
jeffsalzbrun@gmail.com

612-788-1552

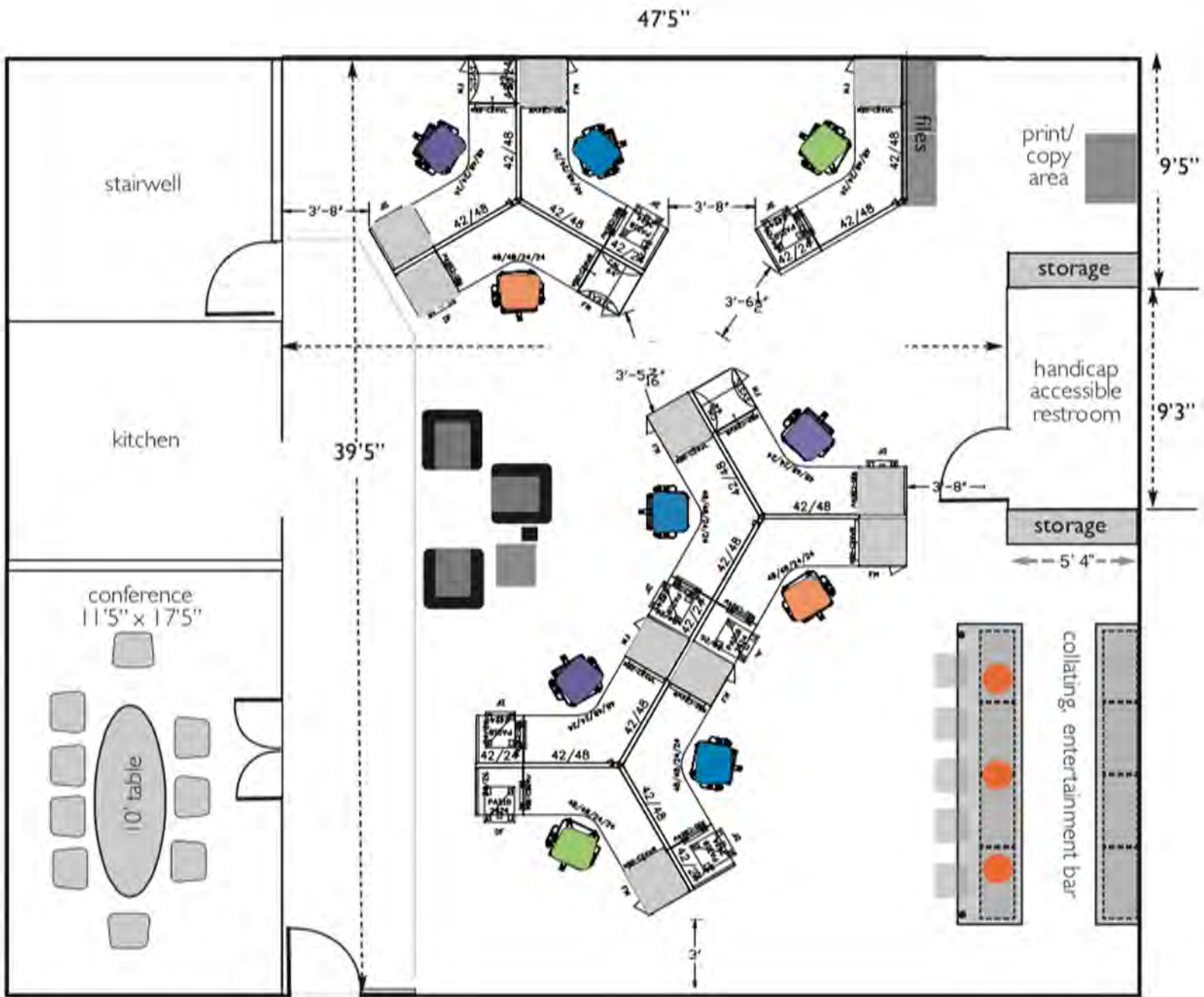
ERSI

COMMERCIAL REAL ESTATE SINCE 1990

ESSENCE
REAL ESTATE
SERVICES INC.

SIMPLIFIED COMMUNICATIONS

2815 SOUTH WAYZATA BLVD., MINNEAPOLIS, MN 55405



1,876 SF SUB-LEASE AVAILABLE

JEFF SALZBRUN
jeffsalzbrun@gmail.com

612-788-1552

ERSI
COMMERCIAL

ESSENCE
REAL ESTATE
SERVICES INC.

REAL ESTATE SINCE 1990