

FOR SALE

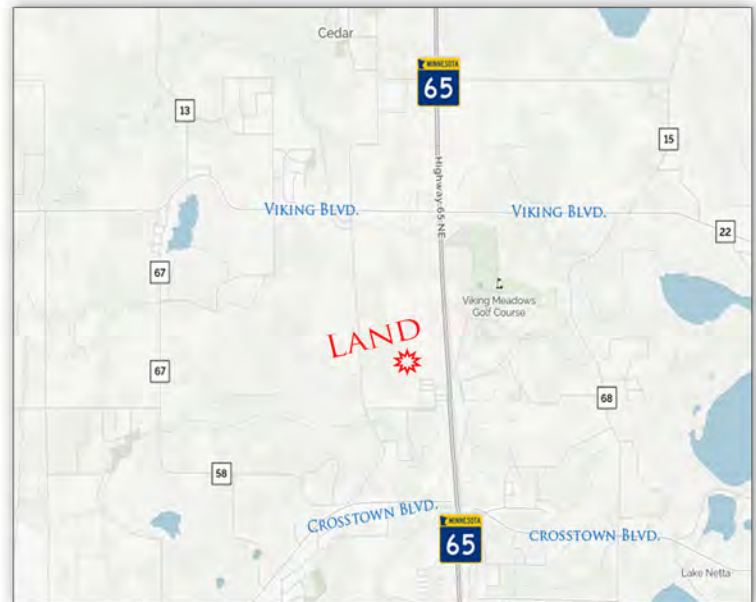


EAST BETHEL LAND

185TH AND HIGHWAY 65, EAST BETHEL, MN 55011

OVER 1,300 FEET FRONTAGE
ON HWY 65

- APPROX. 4.12 ACRES - 30.70 ACRES
- 2020 TAXES \$ 3,748.69
- PID 32-33-23-31-0008
- ZONED HIGHWAY COMMERCIAL (B3)
- CITY SEWER AND WATER
- PRO DEVELOPMENT CITY



APPROX. - 30.70 ACRES OF LAND!

ERSI

ESSENCE
REAL ESTATE
SERVICES INC.

COMMERCIAL REAL ESTATE SINCE 1990

JEFF NORDNESS

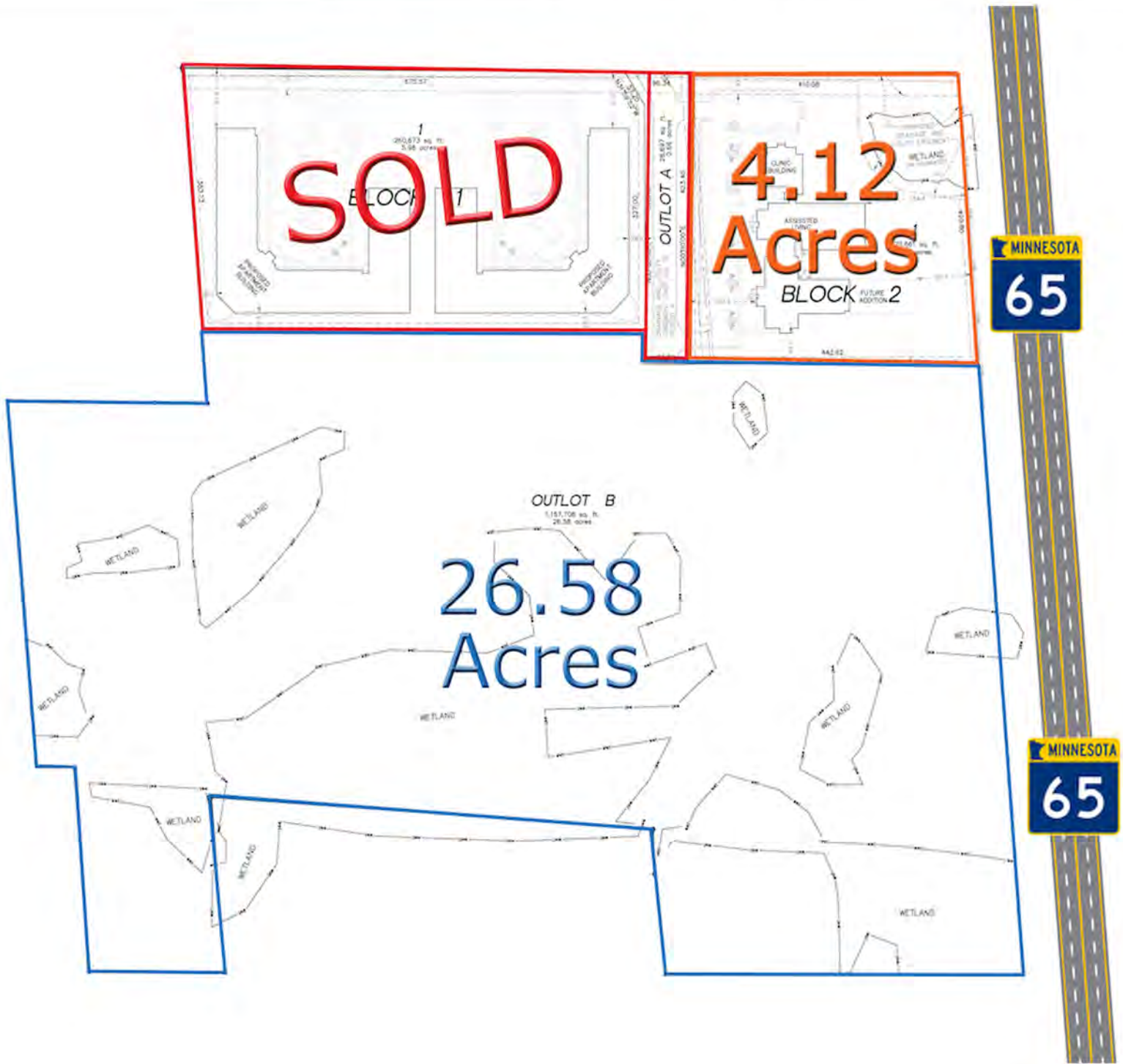
651-341-5044

jeff@essencerealestate.com

OFFICE: 651-482-1871

EAST BETHEL LAND

185TH AND HIGHWAY 65, EAST BETHEL, MN 55011



GREAT LAND RIGHT OFF HWY 65

ERSI

ESSENCE
REAL ESTATE
SERVICES INC.

COMMERCIAL REAL ESTATE SINCE 1990

JEFF NORDNESS

651-341-5044

jeff@essencerealestate.com

OFFICE: 651-482-1871