

FOR LEASE



HARBOR PLACE OFFICE VILLAGE

470 - 520 HWY 96, SHOREVIEW, MN 55126

LEASE RATES:

OFFICE NET RENT \$13.00 SF
2020 EST. OP. EXP. \$ 8.17 SF

(GAS & ELECTRIC EXCLUDED)

- 660 SF - 2,533 SF AVAILABLE
- OFFICE SPACE WITH WINDOWS THAT OPEN
- ATTRACTIVE OFFICE BUILD-OUTS
- MULTI-TENANT CAMPUS SETTING
- ILLUMINATED MONUMENT SIGNAGE AVAILABLE
- EXTENSIVE LANDSCAPING
- SUPERB ACCESS TO HWY 96 BETWEEN 35E & 35W
- AREA AMENITIES INCLUDE: NUMEROUS RETAIL STORES, HOTELS, GAS STATIONS & RESTAURANTS



GREAT OFFICE SPACES AVAILABLE

ERSI

ESSENCE
REAL ESTATE
SERVICES INC.

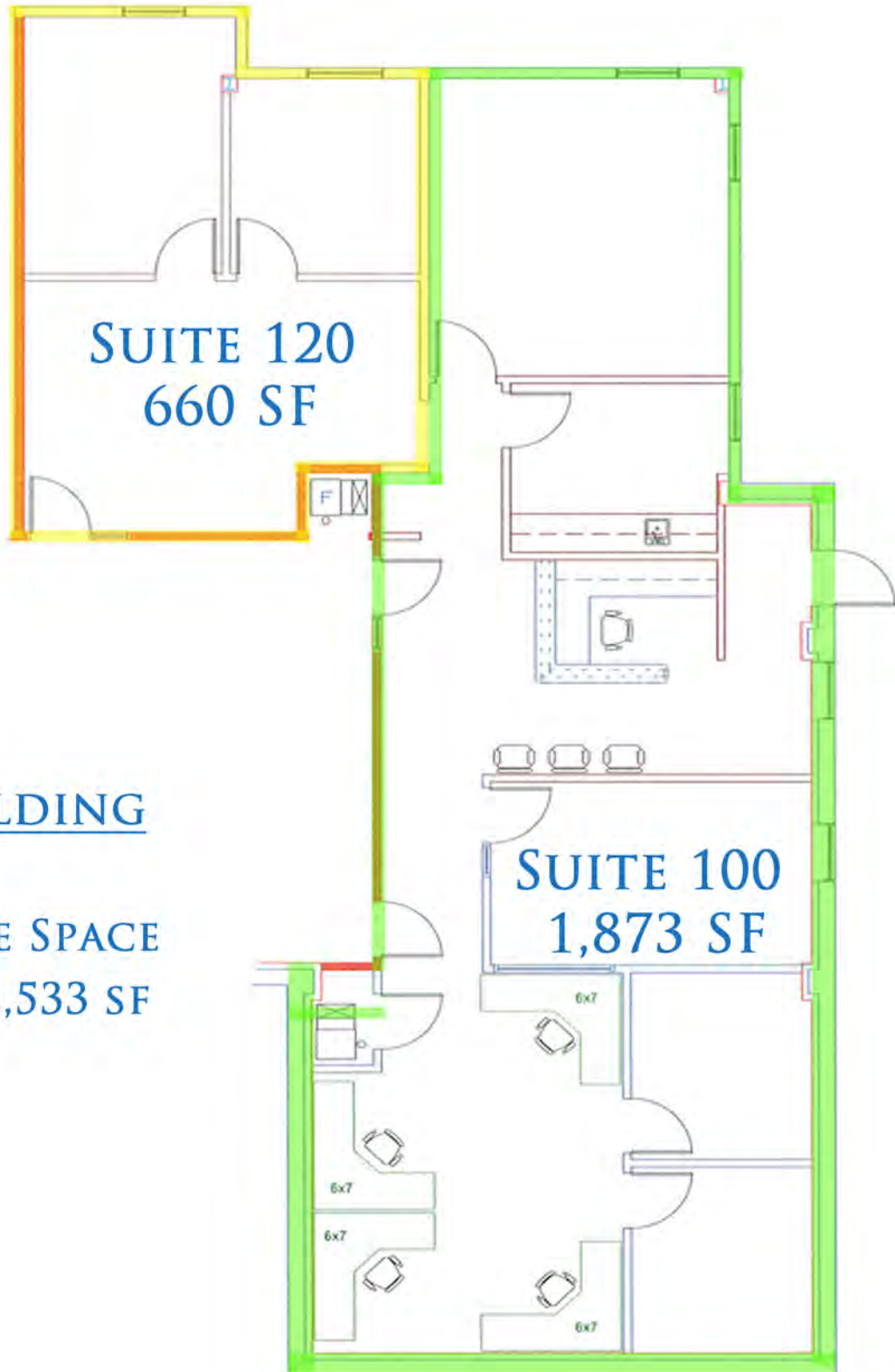
COMMERCIAL REAL ESTATE SINCE 1990

JEFF NORDNESS
651-341-5044
jeff@essencerealestate.com

OFFICE: 651-482-1871

HARBOR PLACE OFFICE VILLAGE

470 HWY 96 WEST, SHOREVIEW, MN 55126



470 BUILDING

AVAILABLE SPACE
660 SF - 2,533 SF

ERSI

ESSENCE
REAL ESTATE
SERVICES INC.

COMMERCIAL REAL ESTATE SINCE 1990

JEFF NORDNESS

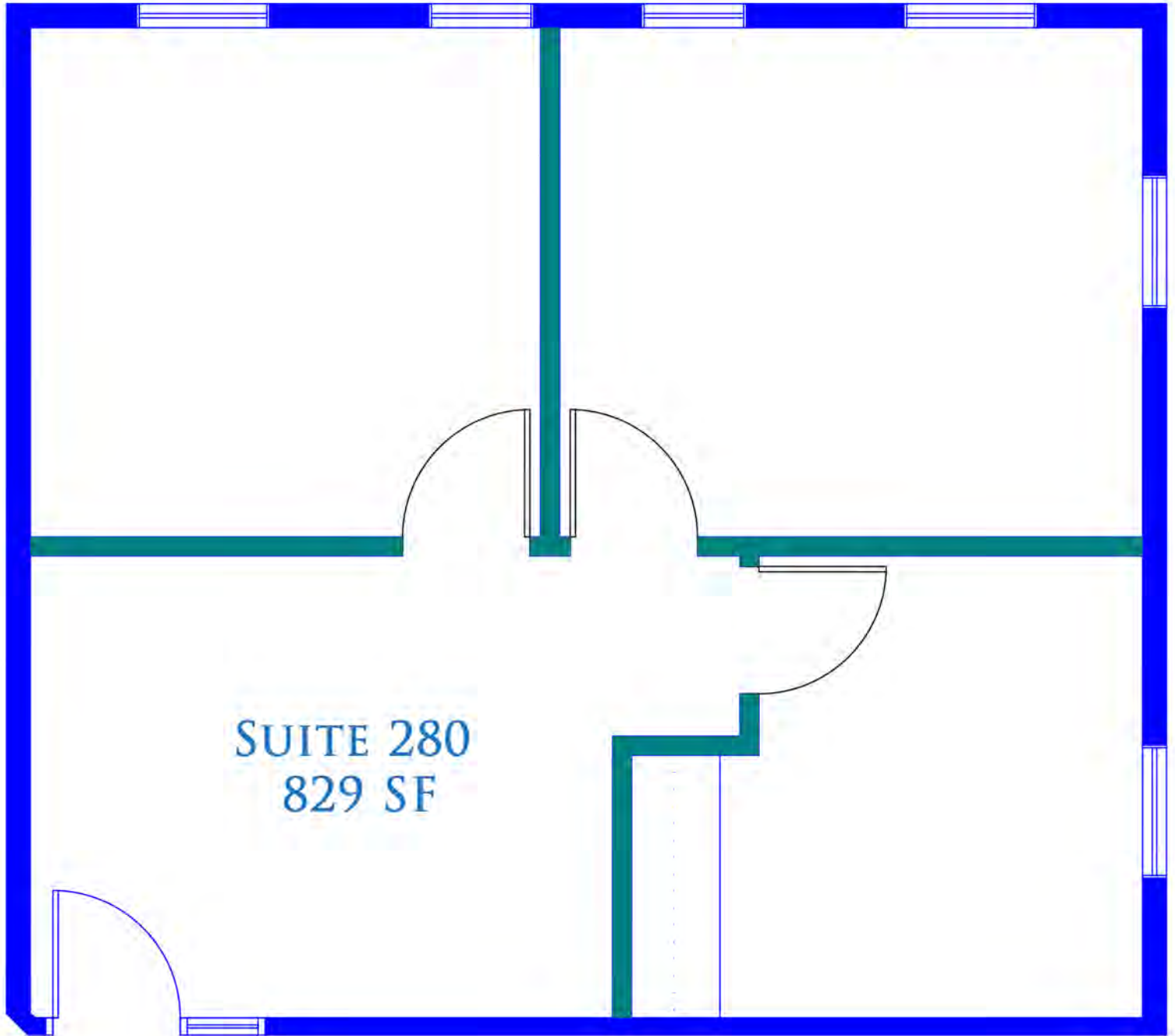
651-341-5044

jeff@essencerealestate.com

OFFICE: 651-482-1871

HARBOR PLACE OFFICE VILLAGE

470 HWY 96 WEST, SHOREVIEW, MN 55126



PRIME CORNER SPACE

ERSI

ESSENCE
REAL ESTATE
SERVICES INC.

COMMERCIAL REAL ESTATE SINCE 1990

JEFF NORDNESS

651-341-5044

jeff@essencerealestate.com

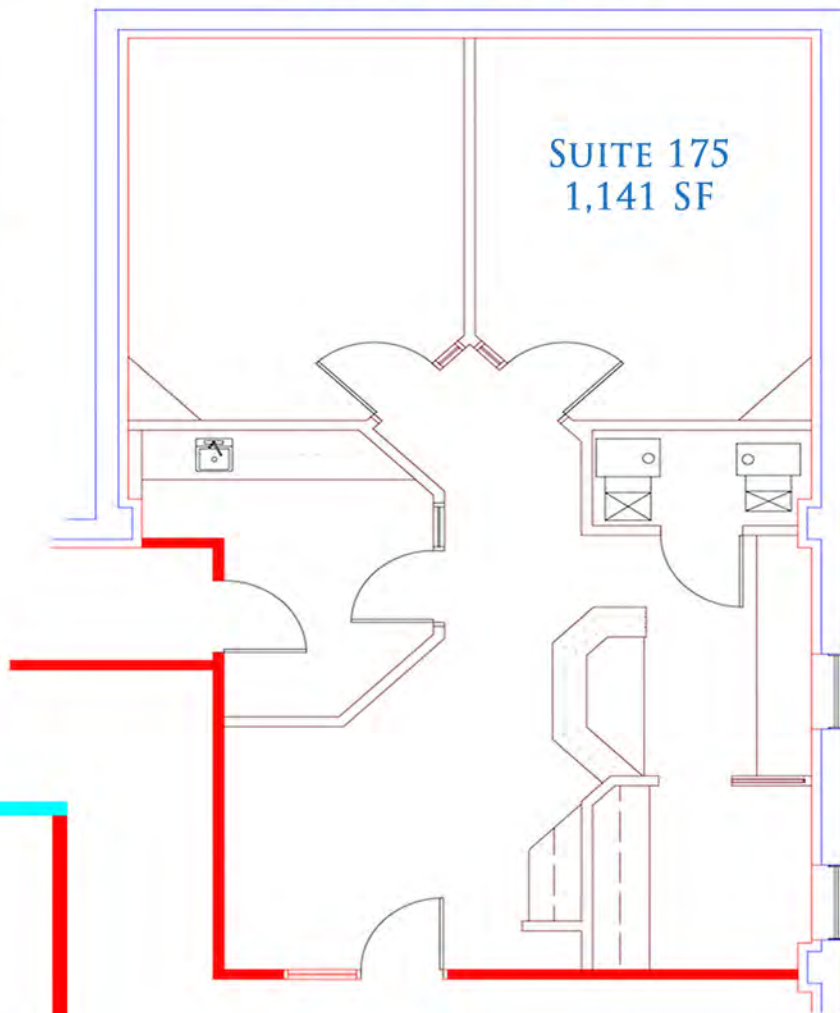
OFFICE: 651-482-1871

HARBOR PLACE OFFICE VILLAGE

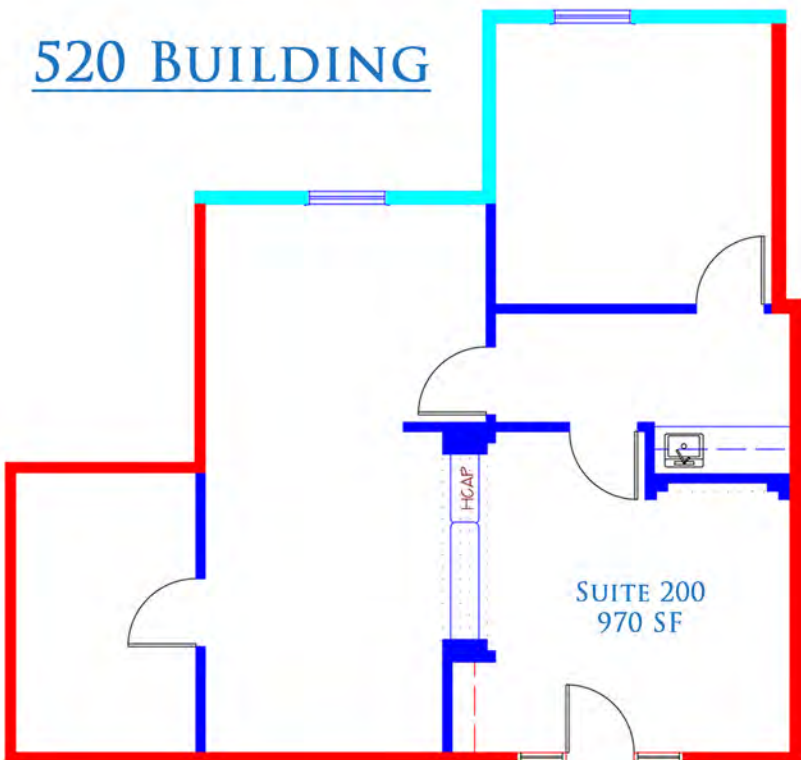
480 & 520 HWY 96 WEST, SHOREVIEW, MN 55126



480 BUILDING



520 BUILDING



ERSI

ESSENCE
REAL ESTATE
SERVICES INC.

COMMERCIAL REAL ESTATE SINCE 1990

JEFF NORDNESS

651-341-5044

jeff@essencerealestate.com

OFFICE: 651-482-1871