

STONY LAKE OFFICE PARK

2451 - 2491 15TH STREET NW, NEW BRIGHTON, MN 55112

FOR LEASE

GREAT SMALL SPACE



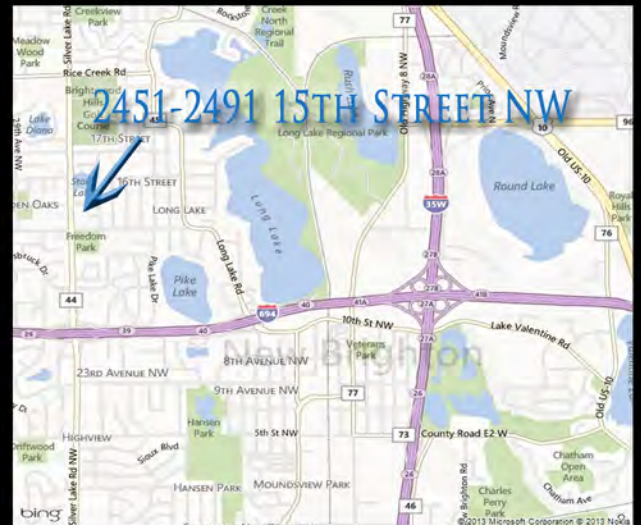
LEASE RATES

OFFICE NET RENT \$12.50 SF

2019 EST. OP. EXP. \$ 9.02 SF

(EST. OP. EXP. EXCLUDES GAS, ELECTRIC AND SUITE CLEANING)

- 564 SF - 1,540 SF AVAILABLE
- TERRIFIC ACCESS TO I-694 & I-35W
- PERFECT FOR OFFICE, MEDICAL OR SERVICE
- QUIET, SINGLE-STORY BUILDINGS
- CONVENIENT WINDOWS THAT OPEN
- EXTENSIVE LANDSCAPING
- LOCATED NEAR US BANK, WELLS FARGO, ACAPULCO, SUBWAY, LA FITNESS & COWBOY JACKS!



JEFF SALZBRUN
612-788-1552
jeffs@essencerealestate.com

JEFF NORDNESS
651-341-5044
jeff@essencerealestate.com

OFFICE: 651-482-1871

ERSI

ESSENCE
REAL ESTATE
SERVICES INC.

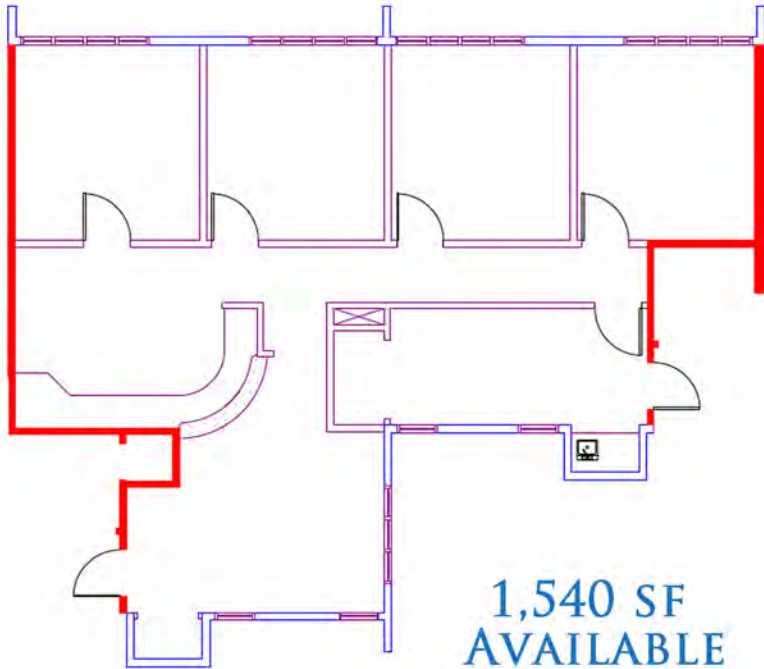
COMMERCIAL REAL ESTATE SINCE 1990

STONY LAKE OFFICE PARK

2475 - 15TH STREET NW, NEW BRIGHTON, MN 55112

FOR LEASE

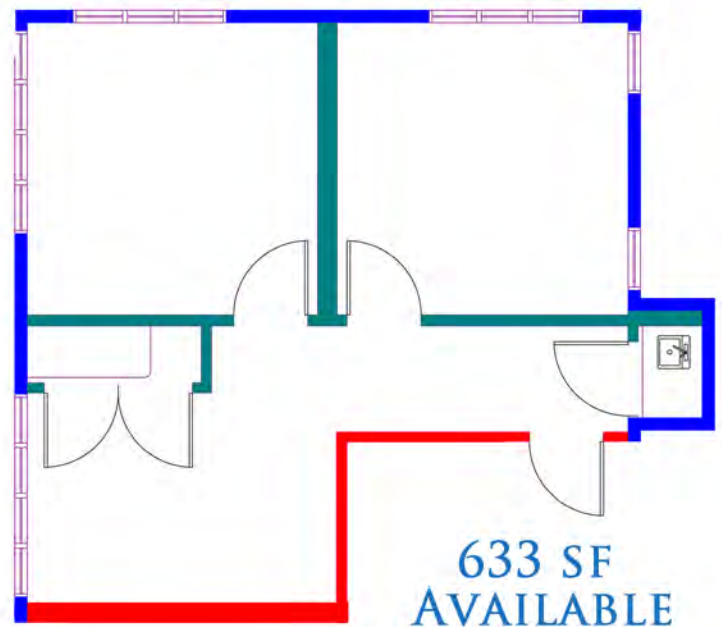
2475 - SUITE D & F



SUITE D

APPROX.
\$2,762.00
PER MONTH

SUITE F
APPROX.
\$1,135.00
PER MONTH



JEFF SALZBRUN
612-788-1552
jeffs@essencerealestate.com

JEFF NORDNESS
651-341-5044
jeff@essencerealestate.com

OFFICE: 651-482-1871

ERSI

ESSENCE
REAL ESTATE
SERVICES INC.

COMMERCIAL REAL ESTATE SINCE 1990

STONY LAKE OFFICE PARK

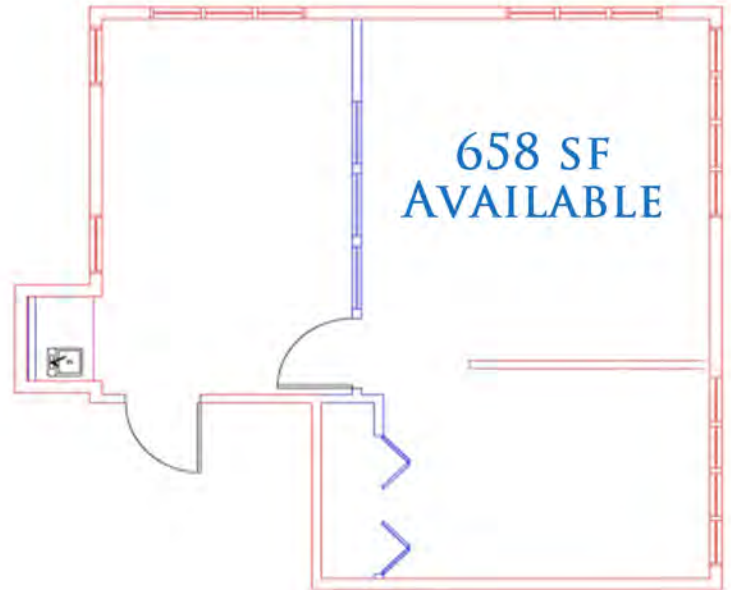
2483 - 15TH STREET NW, NEW BRIGHTON, MN 55112

FOR LEASE

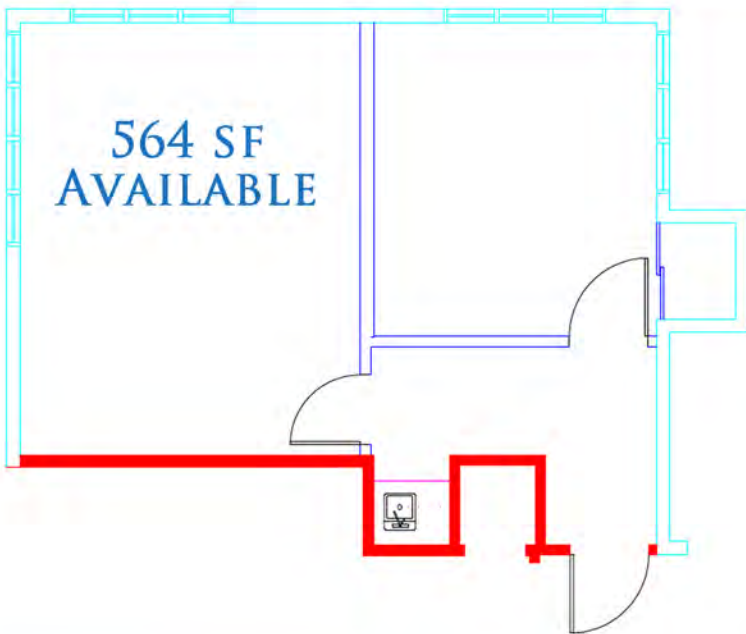
2483 - SUITE A & C

SUITE A

APPROX.
\$1,180.00
PER MONTH



564 SF
AVAILABLE



SUITE C

APPROX.
\$1,012.00
PER MONTH

JEFF SALZBRUN
612-788-1552
jeffs@essencerealestate.com

JEFF NORDNESS
651-341-5044
jeff@essencerealestate.com

OFFICE: 651-482-1871

ERSI

ESSENCE
REAL ESTATE
SERVICES INC.

COMMERCIAL REAL ESTATE SINCE 1990