

# LEGACY AT WOODS EDGE

7525 VILLAGE DRIVE, LINO LAKES, MN 55014

SUB-LEASE

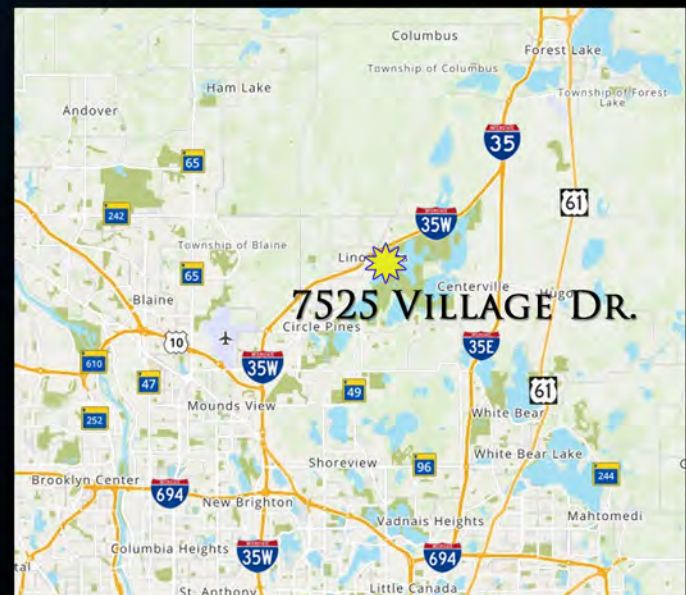
OFFICE/RETAIL SPACE



## SUB-LEASE RATES

OFFICE NET RENT: \$9.00 SF  
2019 EXT. OP. EXP: \$3.51 SF

- 2,369 SF AVAILABLE
- SUBLEASE EXPIRES MAY 1, 2023
- MAIN FLOOR OFFICE/RETAIL SPACE
- THREE (3) FLOORS OF LEASED OUT APT ABOVE
- GREAT VISIBILITY TO LAKE DR & 35W
- ABUNDANT GLASS IN SPACE W/ HIGH CEILINGS
- LOCATED OFF 35W AND LAKE DRIVE
- AREA AMENITIES INCLUDING: TARGET, KOHLS, HOLIDAY, BANKS, COFFEE AND MORE.



JEFF SALZBRUN  
612-788-1552  
jeffs@essencerealestate.com

JEFF NORDNESS  
651-341-5044  
jeff@essencerealestate.com

OFFICE: 651-482-1871

# ERSI

ESSENCE  
REAL ESTATE  
SERVICES INC.

COMMERCIAL REAL ESTATE SINCE 1990

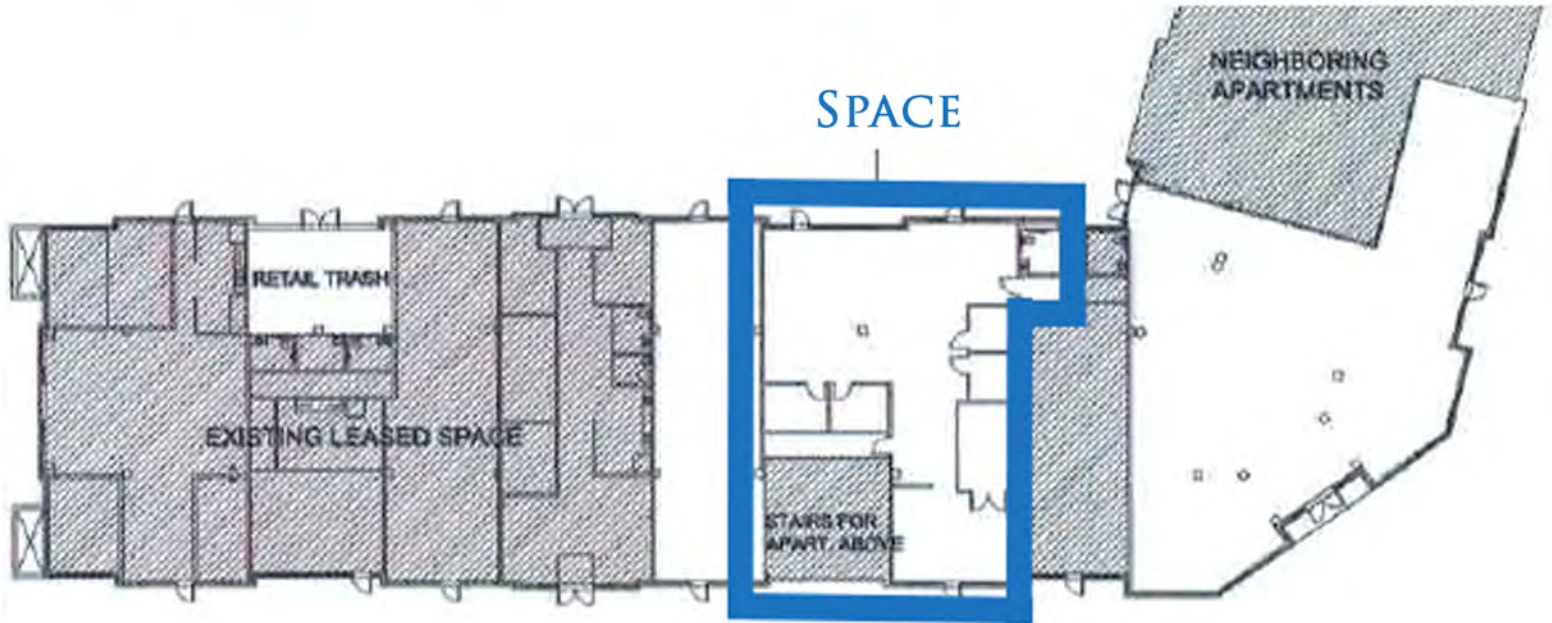


# LEGACY AT WOODS EDGE

7525 VILLAGE DRIVE, LINO LAKES, MN 55014

SUB-LEASE

OFFICE/RETAIL SPACE



2,369 SF AVAILABLE



JEFF SALZBRUN  
612-788-1552  
jeffs@essencerealestate.com

JEFF NORDNESS  
651-341-5044  
jeff@essencerealestate.com

OFFICE: 651-482-1871

# ERSI

ESSENCE  
REAL ESTATE  
SERVICES INC.

COMMERCIAL REAL ESTATE SINCE 1990