

CAMDEN PARK STATE BANK

705 - 42ND AVENUE NORTH, MINNEAPOLIS, MN 55412

FOR SALE

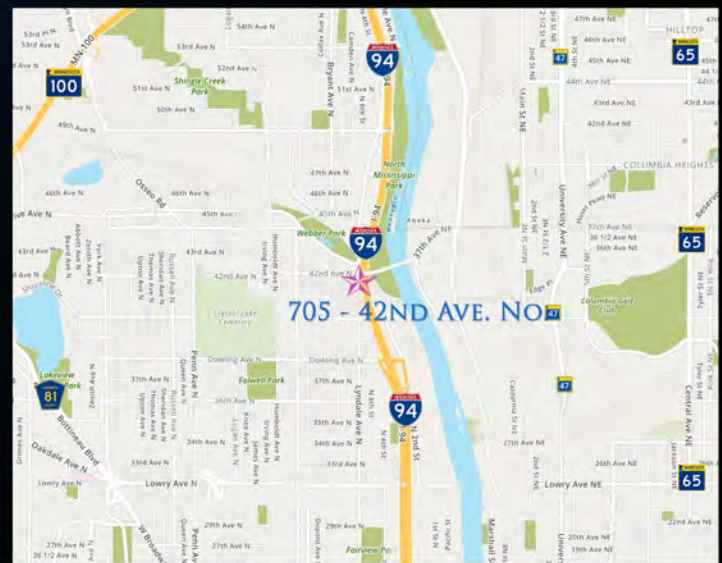
CORNER OF 42ND AND LYNDALE



REDUCED PRICE

~~\$ 1,487,000.00~~ \$ 1,350,000.00

- 20,562 SF BUILDING INCLUDING BASEMENT
- PRIME INVESTMENT WITH SIGNIFICANT UPSIDE POTENTIAL
- 2019 PROPERTY TAX - \$23,405.38
- 45 PARKING SPACES IN BACK LOT
- 2 PHASE CONSTRUCTION, 1910 & 1920
- EXTRA BILLBOARD SIGN INCOME
- UP AND COMING NORTH MPLS. AREA
- LOCATED JUST OFF I-94
- MANY AREA AMENITIES INCLUDING: CAMDEN CLINIC, PARKS, MCDONALDS AND MORE.



JEFF SALZBRUN
612-788-1552
jeffs@essencerealestate.com

JEFF NORDNESS
651-341-5044
jeff@essencerealestate.com

OFFICE: 651-482-1871

ERSI

ESSENCE
REAL ESTATE
SERVICES INC.

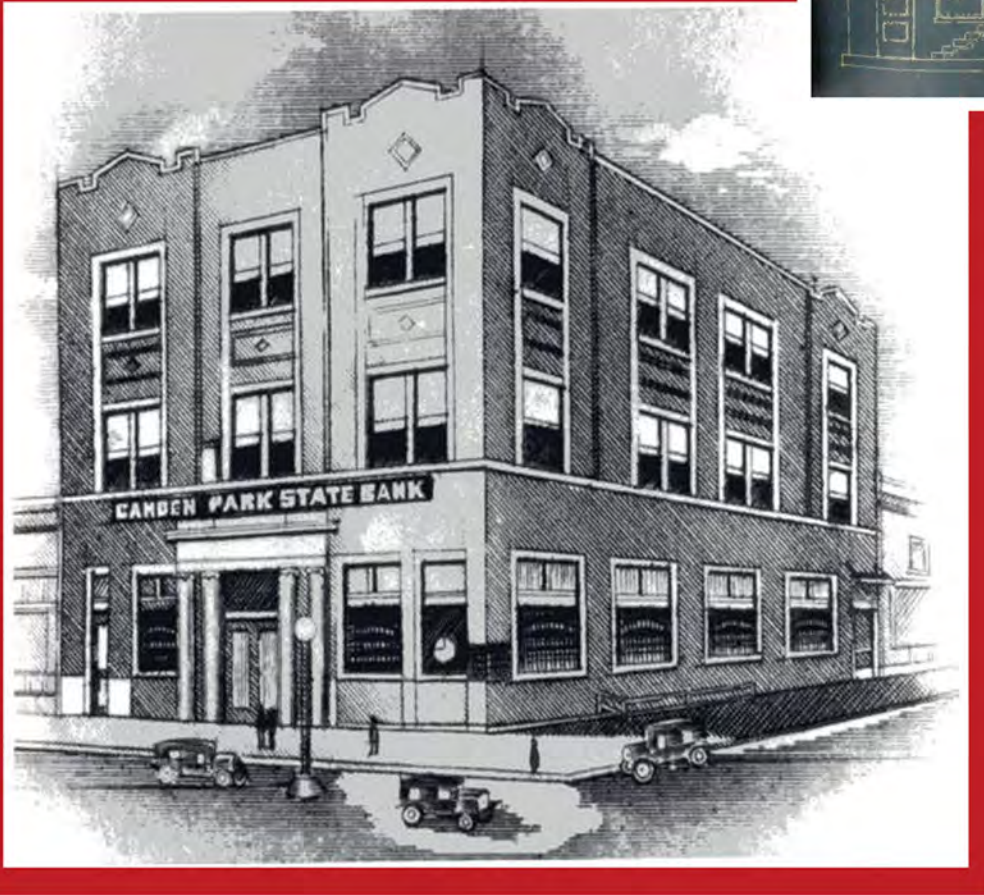
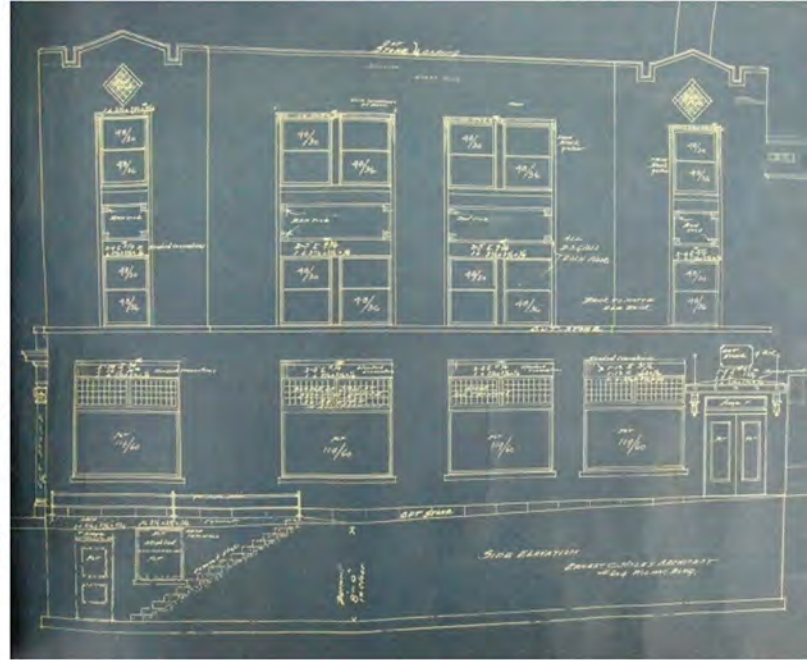
COMMERCIAL REAL ESTATE SINCE 1990

CAMDEN PARK STATE BANK

705 - 42ND AVENUE NORTH, MINNEAPOLIS, MN 55412

FOR SALE

FANTASTIC BUILDING



MINNEAPOLIS HERITAGE PRESERVATION COMMISSION

MINNEAPOLIS DEPARTMENT OF COMMUNITY PLANNING & ECONOMIC DEVELOPMENT

DESIGNATION STUDY FOR THE CAMDEN PARK STATE BANK BUILDING



JEFF SALZBRUN
612-788-1552
jeffs@essencerealestate.com

JEFF NORDNESS
651-341-5044
jeff@essencerealestate.com

OFFICE: 651-482-1871

ERSI

ESSENCE
REAL ESTATE
SERVICES INC.

COMMERCIAL REAL ESTATE SINCE 1990