

HARBOR PLACE OFFICE VILLAGE

470 - 520 HWY 96 WEST, SHOREVIEW, MN 55126

FOR LEASE

SMALL SPACES AVAILABLE



LEASE RATES:

OFFICE NET RENT \$13.00 SF
2019 OP. EXP. \$ 8.69 SF

(EXCLUDES GAS, ELECTRIC & CLEANING FOR PREMISES)

- 660 SF - 1,415 SF AVAILABLE
- OFFICE SPACE WITH WINDOWS THAT OPEN
- ATTRACTIVE OFFICE BUILD-OUTS
- MULTI-TENANT CAMPUS SETTING
- ILLUMINATED MONUMENT SIGNAGE AVAILABLE
- EXTENSIVE LANDSCAPING
- SUPERB ACCESS TO HWY 96 BETWEEN 35E & 35W
- AREA AMENITIES INCLUDE: NUMEROUS RETAIL STORES, HOTELS, GAS STATIONS & RESTAURANTS



JEFF SALZBRUN
612-788-1552
jeffs@essencerealestate.com

JEFF NORDNESS
651-341-5044
jeff@essencerealestate.com

OFFICE: 651-482-1871

ERSI

ESSENCE
REAL ESTATE
SERVICES INC.

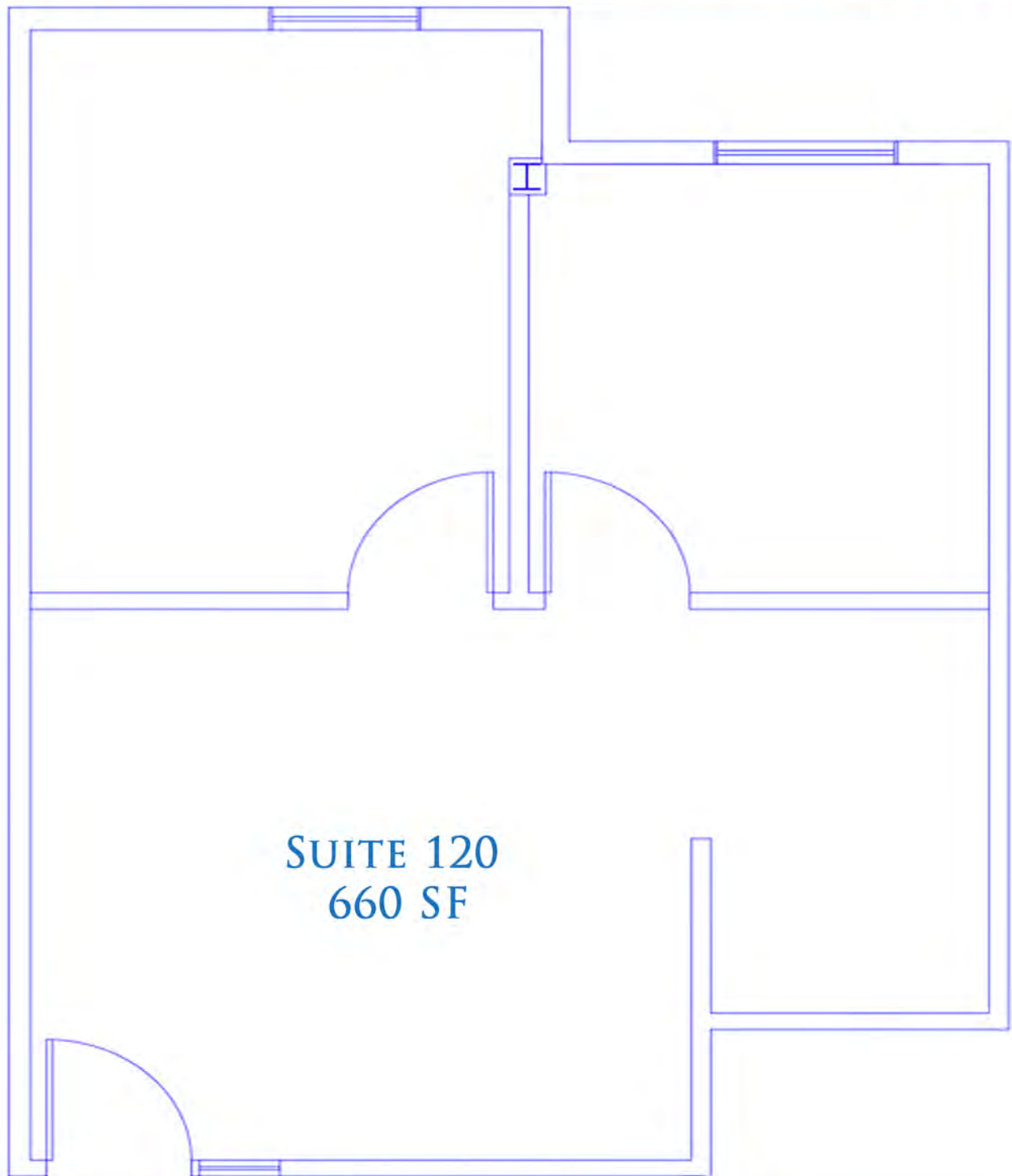
COMMERCIAL REAL ESTATE SINCE 1990

HARBOR PLACE OFFICE VILLAGE

470 HWY 96 WEST, SHOREVIEW, MN 55126

FOR LEASE

BUILDING 470



SUITE 120
660 SF

JEFF SALZBRUN
612-788-1552
jeffs@essencerealestate.com

JEFF NORDNESS
651-341-5044
jeff@essencerealestate.com

OFFICE: 651-482-1871

ERSI

ESSENCE
REAL ESTATE
SERVICES INC.

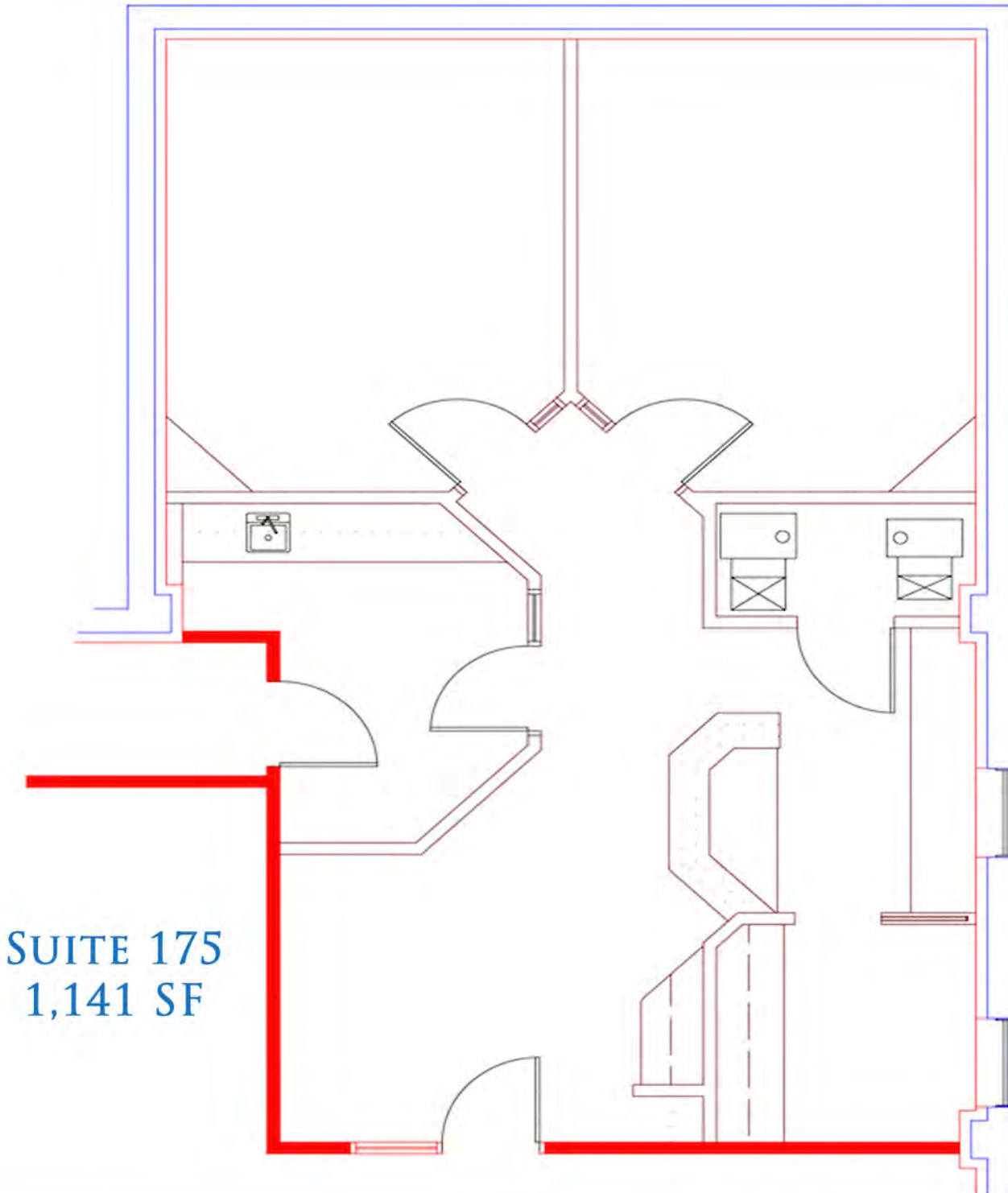
COMMERCIAL REAL ESTATE SINCE 1990

HARBOR PLACE OFFICE VILLAGE

480 HWY 96 WEST, SHOREVIEW, MN 55126

FOR LEASE

BUILDING 480



SUITE 175
1,141 SF

JEFF SALZBRUN
612-788-1552
jeffs@essencerealestate.com

JEFF NORDNESS
651-341-5044
jeff@essencerealestate.com

OFFICE: 651-482-1871



ESSENCE
REAL ESTATE
SERVICES INC.

COMMERCIAL REAL ESTATE SINCE 1990

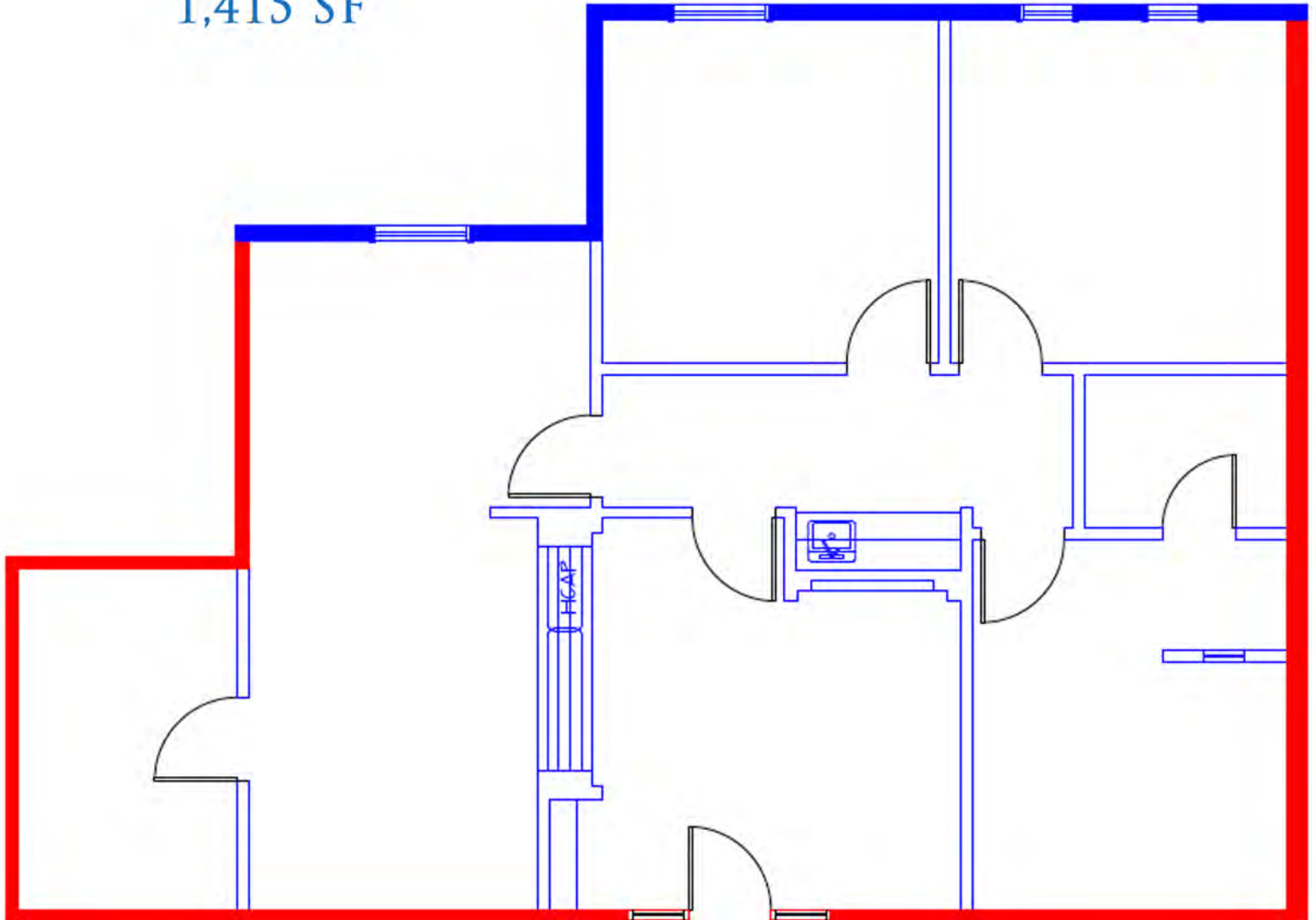
HARBOR PLACE OFFICE VILLAGE

520 HWY 96 WEST, SHOREVIEW, MN 55126

FOR LEASE

BUILDING 520

SUITE 200
1,415 SF



JEFF SALZBRUN
612-788-1552
jeffs@essencerealestate.com

JEFF NORDNESS
651-341-5044
jeff@essencerealestate.com

OFFICE: 651-482-1871

ERSI

ESSENCE
REAL ESTATE
SERVICES INC.

COMMERCIAL REAL ESTATE SINCE 1990