

# 4455 SUITES

4455 WHITE BEAR PKWY, WHITE BEAR LAKE, MN 55110

FOR LEASE

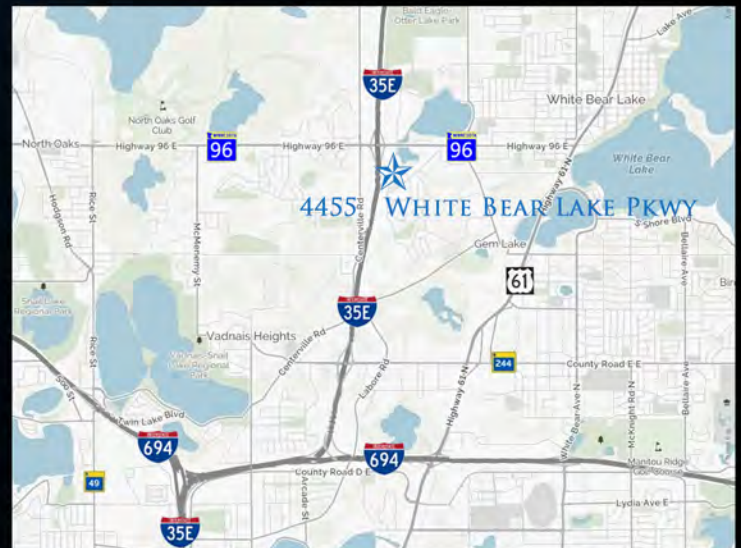
FANTASTIC SPACES AVAILABLE



## LEASE RATES

OFFICE GROSS RENT: \$18.00 SF

- 1,487 SF - 6,106 SF AVAILABLE
- SPECTACULAR GLASS LINES
- AMPLE PARKING
- FANTASTIC ACCESS TO 35E & HWY 96
- MANY AREA AMENITIES INCLUDING:  
LODGING, CARIBOU, LIFETIME FITNESS,  
APPLEBEES, SUPER AMERICA AND  
CARBONE'S PIZZA.



JEFF SALZBRUN  
612-788-1552  
jeffs@essencerealestate.com

JEFF NORDNESS  
651-341-5044  
jeff@essencerealestate.com

OFFICE: 651-482-1871

# ERSI

ESSENCE  
REAL ESTATE  
SERVICES INC.

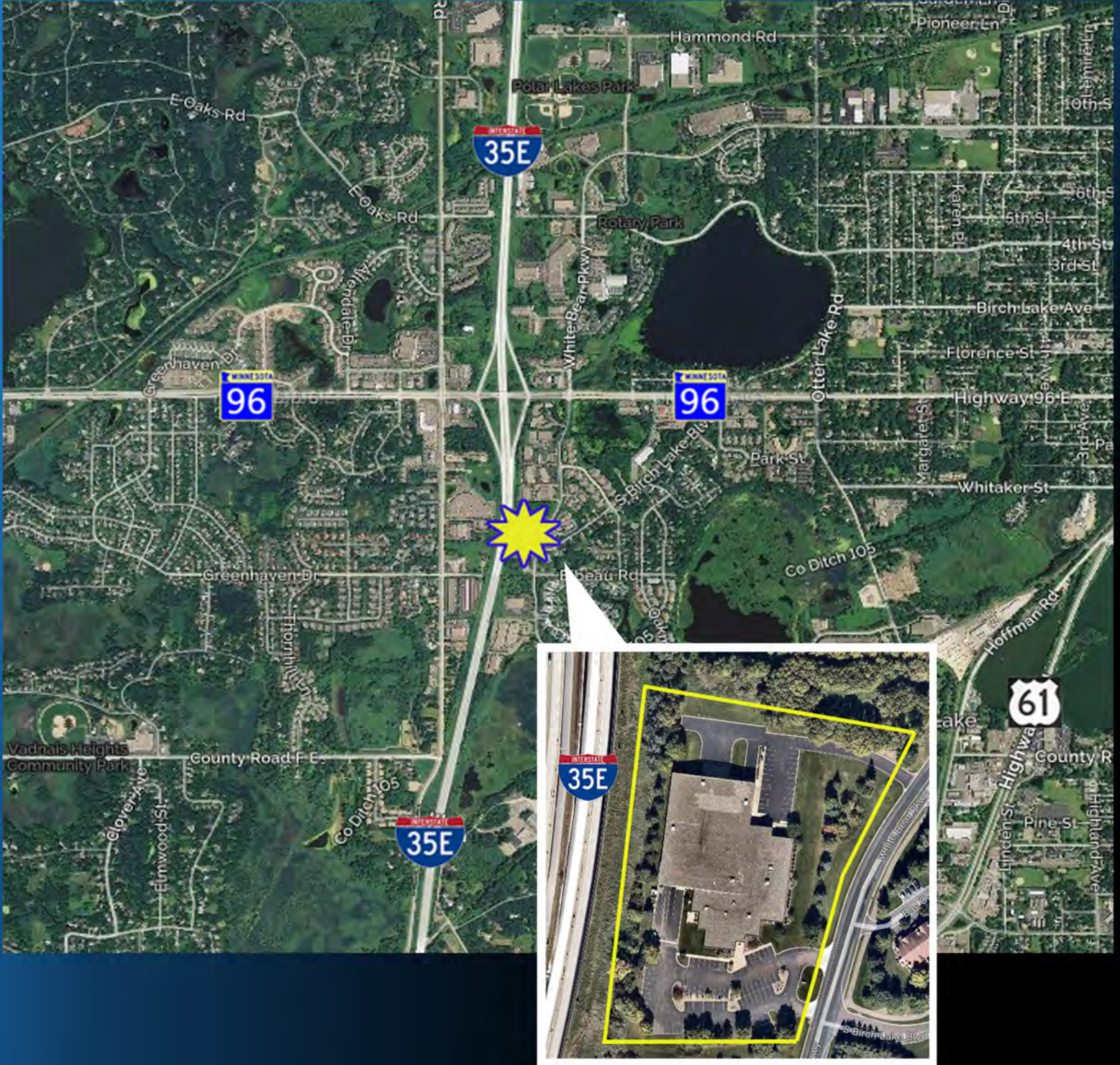
COMMERCIAL REAL ESTATE SINCE 1990

# 4455 SUITES

4455 WHITE BEAR PKWY, WHITE BEAR LAKE, MN 55110

FOR LEASE

AERIAL VIEW



JEFF SALZBRUN  
612-788-1552  
jeffs@essencerealestate.com

JEFF NORDNESS  
651-341-5044  
jeff@essencerealestate.com

OFFICE: 651-482-1871

# ERSI

ESSENCE  
REAL ESTATE  
SERVICES INC.

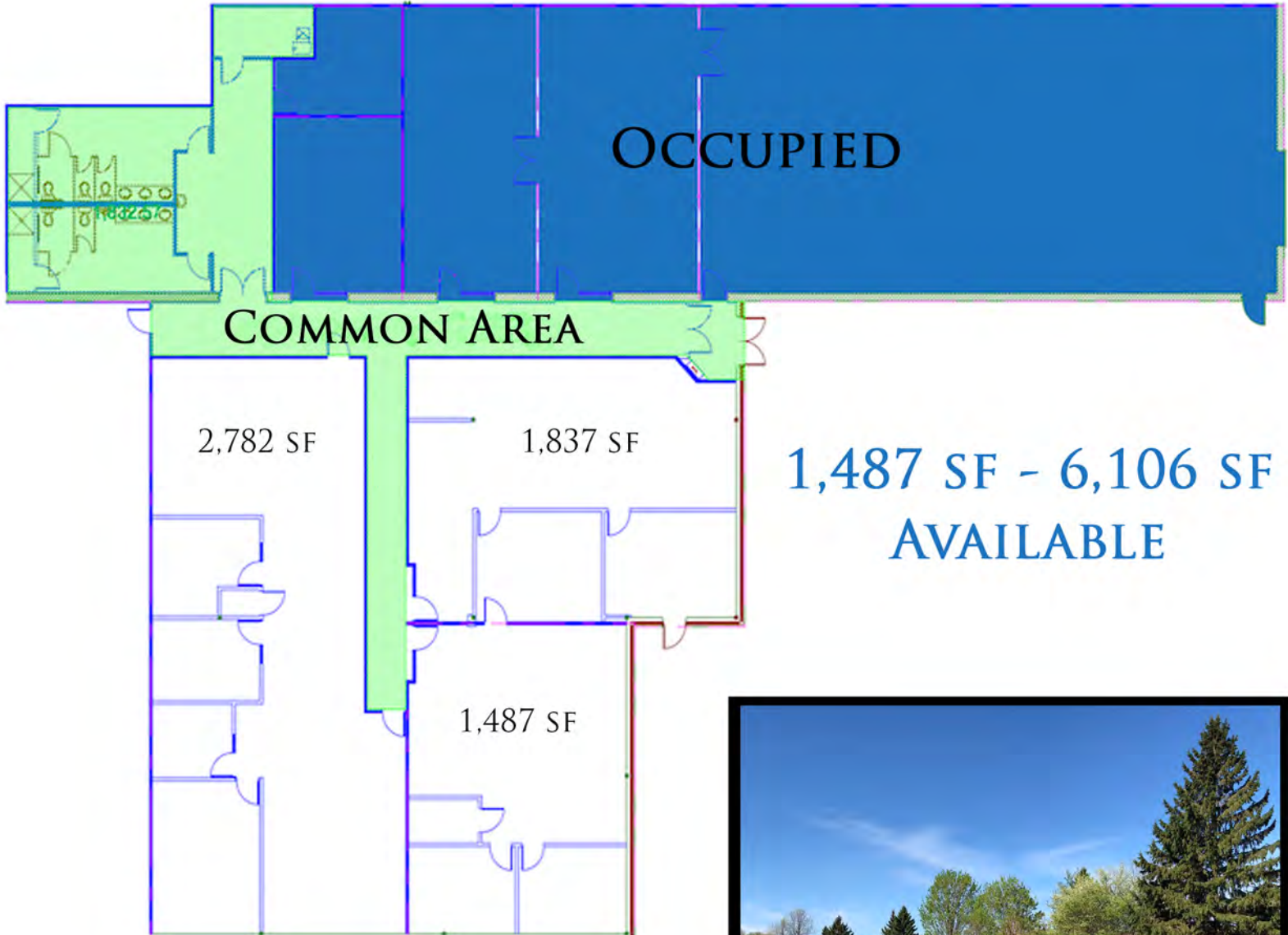
COMMERCIAL REAL ESTATE SINCE 1990

# 4455 SUITES

4455 WHITE BEAR PKWY, WHITE BEAR LAKE, MN 55110

FOR LEASE

FLOOR PLAN



JEFF SALZBRUN  
612-788-1552  
jeffs@essencerealestate.com

JEFF NORDNESS  
651-341-5044  
jeff@essencerealestate.com

OFFICE: 651-482-1871

# ERSI

ESSENCE  
REAL ESTATE  
SERVICES INC.

COMMERCIAL REAL ESTATE SINCE 1990