

# MICKMAN BROS. FREEZER/COOLER/STORAGE

1214 - 229TH AVENUE NW, OAK GROVE, MN 55005

FOR LEASE

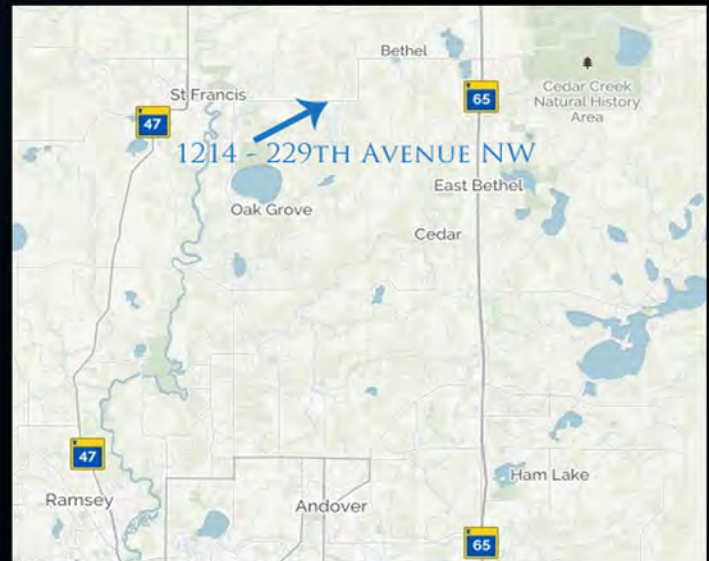
100% WAREHOUSE & FREEZER SPACE



## MODIFIED GROSS LEASE RATE

GROSS RENT: \$4.00 PSF / \$5.00 PSF  
WAREHOUSE / COOLER

- 2,000 - 27,000 SF AVAILABLE
- 100% FREEZER/COOLER/STORAGE WAREHOUSE SPACE
- PLENTY OF OUTSIDE STORAGE AVAILABLE
- ELECTRIC IS BILLED SEPERATELY
- 12 FOOT & 14 FOOT DRIVE-INS
- MULTI TRUCK 4 FOOT DOCK PLATFORM ACCESS
- SHORT TERM DEALS ONLY
- SPACE IS NOT AVAILABLE ANNUALLY BETWEEN OCTOBER 15 - DECEMBER 15



JEFF SALZBRUN  
612-788-1552  
jeffs@essencerealestate.com

JEFF NORDNESS  
651-341-5044  
jeff@essencerealestate.com

OFFICE: 651-482-1871

# ERSI

ESSENCE  
REAL ESTATE  
SERVICES INC.

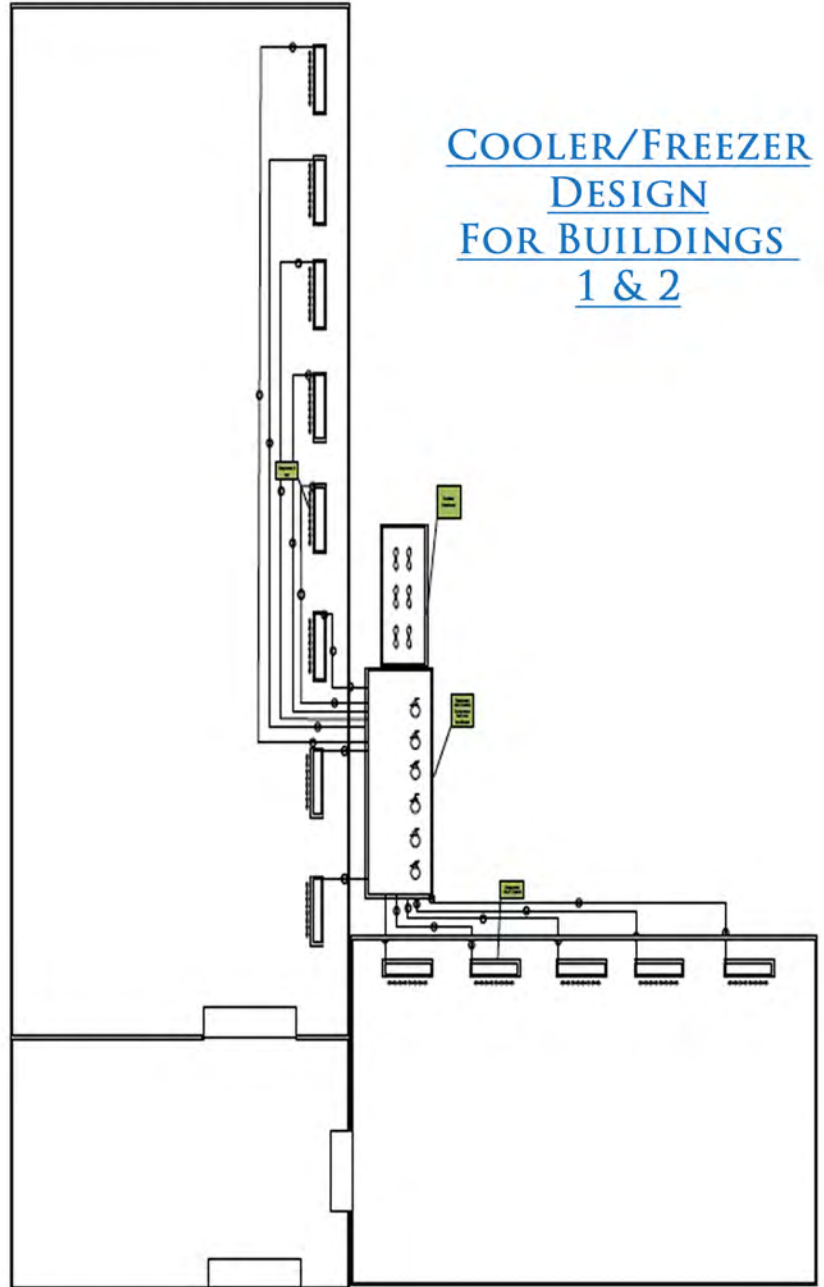
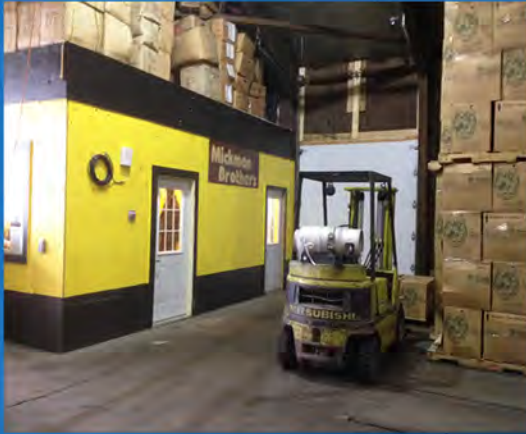
COMMERCIAL REAL ESTATE SINCE 1990

# MICKMAN BROS. FREEZER/COOLER/STORAGE

1214 - 229TH AVENUE NW, OAK GROVE, MN 55005

FOR LEASE

FLOOR PLAN



JEFF SALZBRUN  
612-788-1552  
jeffs@essencerealestate.com

JEFF NORDNESS  
651-341-5044  
jeff@essencerealestate.com

OFFICE: 651-482-1871

## ERSI

ESSENCE  
REAL ESTATE  
SERVICES INC.

COMMERCIAL REAL ESTATE SINCE 1990