

# FOR SALE

## BAY POINTE PLAZA

North of Clear Lake City Blvd.



### PROPERTY INFORMATION

**Total SF: 42,415**

**Sales Price: \$508,980.00**

**Sales Price Per SF: \$12.00**

### PROPERTY

Clear Lake City Blvd. & Texas Children's Circle, Houston, TX 77062

- Near IH-45, SH3 and Beltway 8
- Map indicates property is approx. 25 Ft. above sea level & outside 500-yr. flood plain.

### COMMENTS

- One of the few commercial tracts left in the Clear Lake Area on a heavily traveled road
- Near Ellington Field.
- All Utilities Available
- Located in deed restricted business park
- Key Map #617H

### FOR MORE INFORMATION:

**Wayne Rutledge**

**Wayne@rutledgecommercial.com**

**832.875.2980**

### Demographics

	1M	3M	5M
<b>Population</b>	<b>8,078</b>	<b>71,508</b>	<b>213,433</b>
<b>Average Age</b>	<b>39</b>	<b>35</b>	<b>35</b>
<b>Avg. Income</b>	<b>\$116,239</b>	<b>\$87,407</b>	<b>\$85,613</b>
<b>Traffic Counts(Cars per day)</b>	<b>40,000+</b>		



# FOR SALE BAY POINTE PLAZA

North of Clear Lake City Blvd.



## FOR MORE INFORMATION:

Wayne Rutledge  
Wayne@RutledgeCommercial.com  
832-875-2980

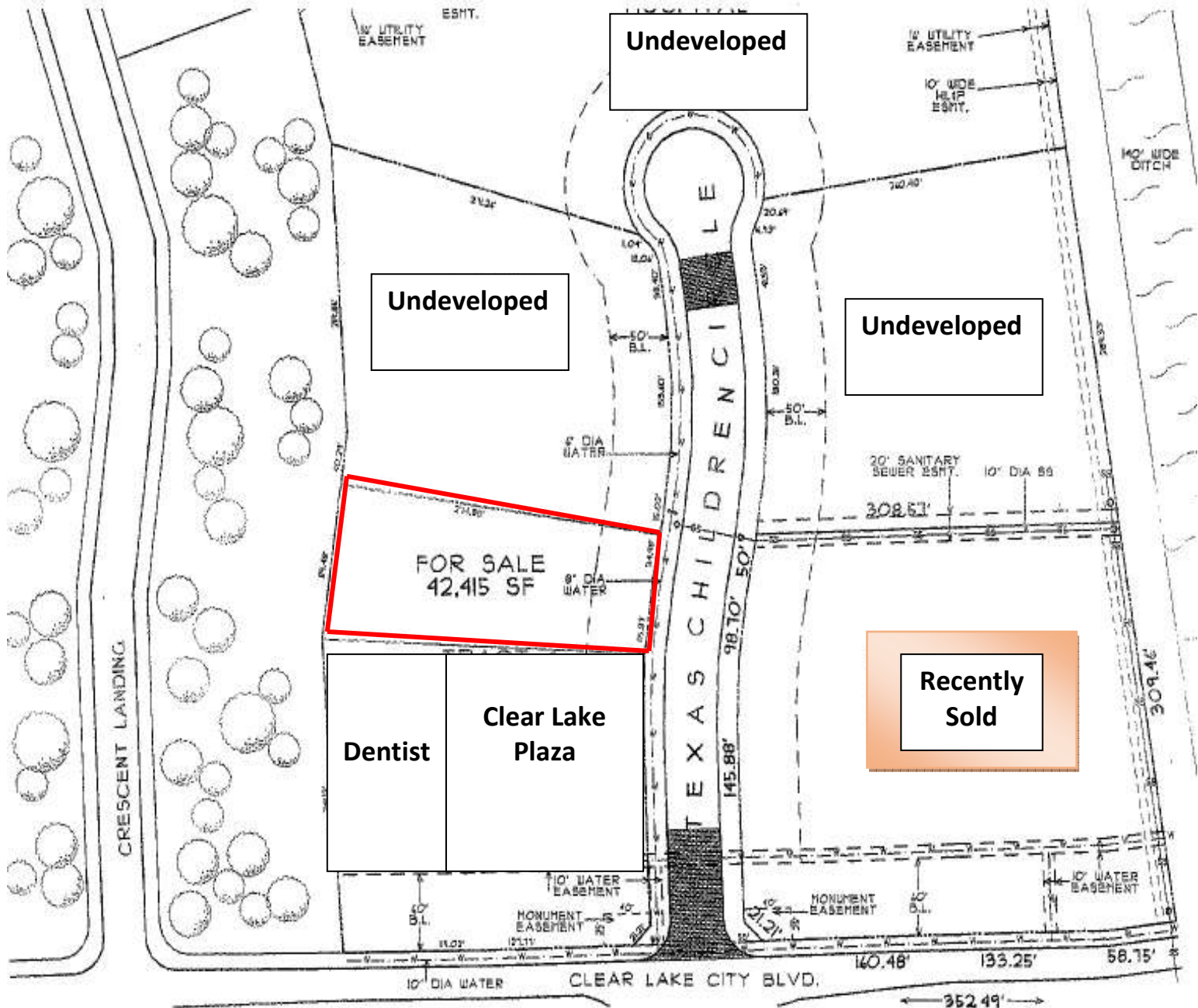
[www.RutledgeCommercial.com](http://www.RutledgeCommercial.com)  
P.O. Box 580066,  
Houston, TX 77258



This information contained herein was obtained from sources believed reliable; however, Rutledge Commercial makes no guarantees, warranties or representations as to the completeness or accuracy thereof. The presentation on this property is submitted subject to errors, omission, changes of price, or conditions, prior to sale or lease, or withdrawal without notice.

# FOR SALE BAY POINTE PLAZA

North of Clear Lake City Blvd.



## FOR MORE INFORMATION:

Wayne Rutledge  
Wayne@RutledgeCommercial.com  
832-875-2980

[www.RutledgeCommercial.com](http://www.RutledgeCommercial.com)  
P.O. Box 580066,  
Houston, TX 77258

