



**KRAUS-ANDERSON®**  
*Realty Company*



## Hopkins Office Center

33 Tenth Avenue South  
Hopkins, MN 55343

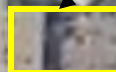
- 29,122 square foot office building located in the heart of downtown Hopkins
- Adjacent to city park
- Great area amenities
- Ample parking ramp space
- Area restaurants, cafes and shops nearby

## KRAUS-ANDERSON REALTY COMPANY

501 S. Eighth Street  
Minneapolis, MN 55404  
612-332-7281  
[www.karealty.com](http://www.karealty.com)

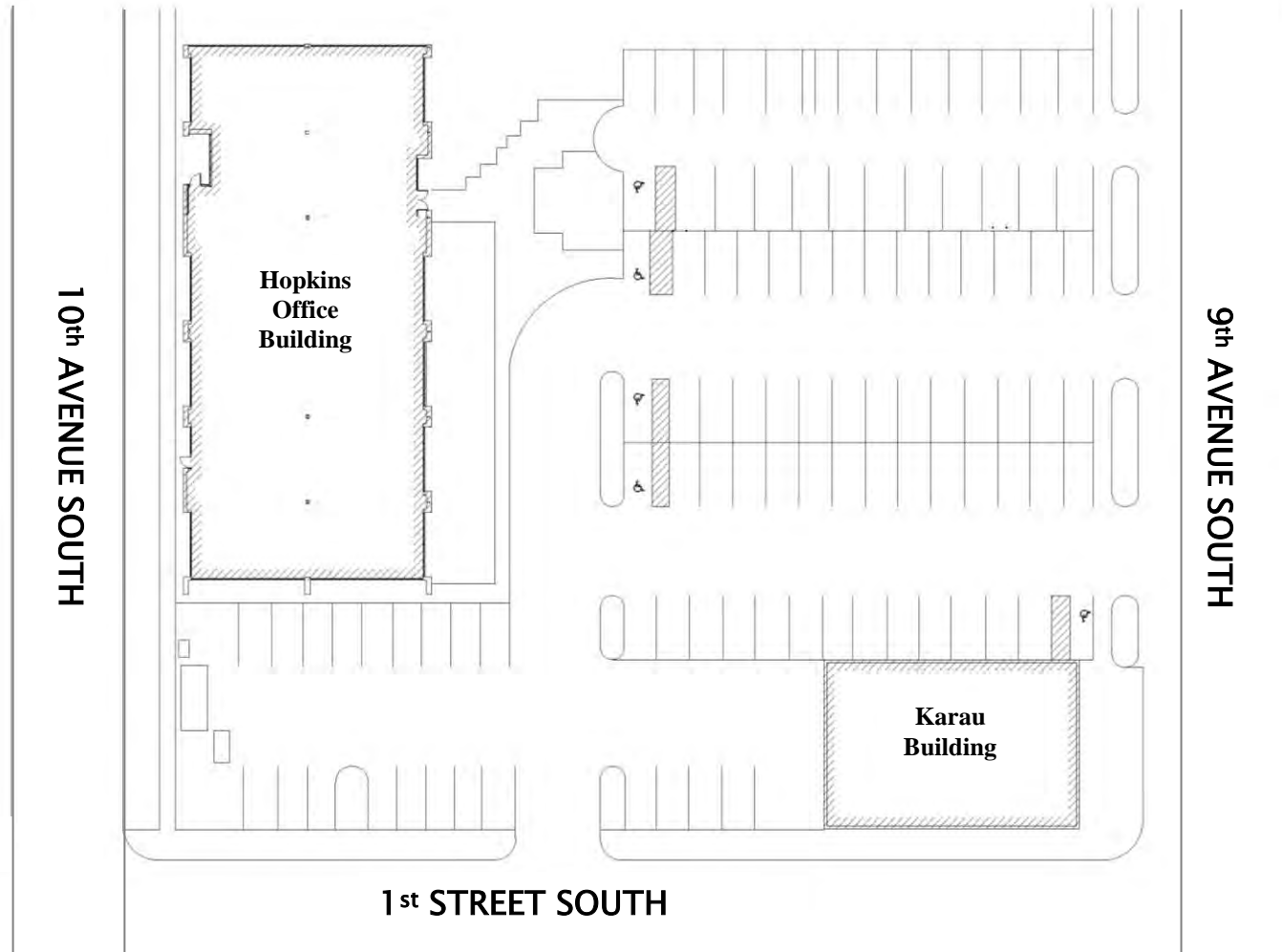


SITE



Hopkins

169



**SITE PLAN**



NOT TO SCALE





**1<sup>st</sup> FLOOR**

10<sup>TH</sup> AVENUE SOUTH

Vacant  
Suite 100  
1,078/SF

Suite 110  
1,438/SF

Suite 120  
1,181/SF

Suite 140  
1,127/SF

Vacant  
Suite 130  
1,042/SF

Suite 145  
572/SF  
Available  
5/1/18

Vacant  
Suite 135  
977/SF

1<sup>ST</sup> STREET SOUTH

Suite 150  
1,645/SF



**KRAUS-ANDERSON®**  
*Realty Company*

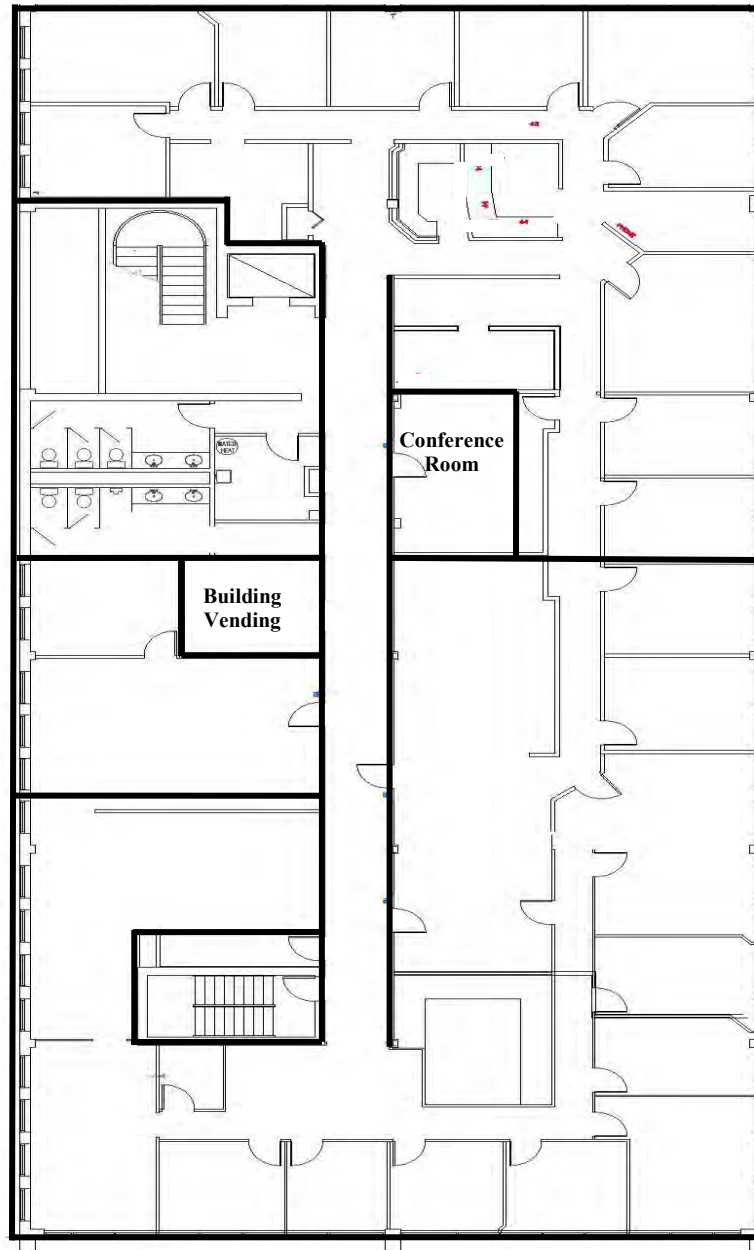
## HOPKINS OFFICE CENTER

33 – 10<sup>th</sup> Avenue South, Hopkins, MN

### 2<sup>nd</sup> FLOOR

10<sup>TH</sup> AVENUE SOUTH

Suite 260  
585/SF



Suite 200  
3,750/SF

Conference  
Room

Building  
Vending

Suite 250  
5,109/SF

1<sup>ST</sup> STREET SOUTH



**KRAUS-ANDERSON®**  
*Realty Company*

## HOPKINS OFFICE CENTER

33 – 10<sup>th</sup> Avenue South, Hopkins, MN

### 3<sup>rd</sup> FLOOR

10<sup>TH</sup> AVENUE SOUTH



Suites 301, 325, 340,  
375, 380-A, 380-B,  
10,517/SF

1<sup>ST</sup> STREET SOUTH