



Arbors Professional Center - Office Condo For Sale



Location Information

2315 W Arbors Dr, Unit# 208
Charlotte, NC 28262
Mecklenburg County
Northeast Submarket

Pricing

Sale Price: \$360,800
Price/sf: \$164

Availability

List Date: 10/17/201
Listing Method: For Sale Only
Listing Status: Available
Total Available: 2200 sf
Minimum Available: 2200 sf
Maximum Contiguous: 2200 sf
Vacant SF: 2200 sf

Contact Information



8419 Prince Valiant Dr
Waxhaw, NC 28173
<http://highlandrealtyltd.com>

Property Details

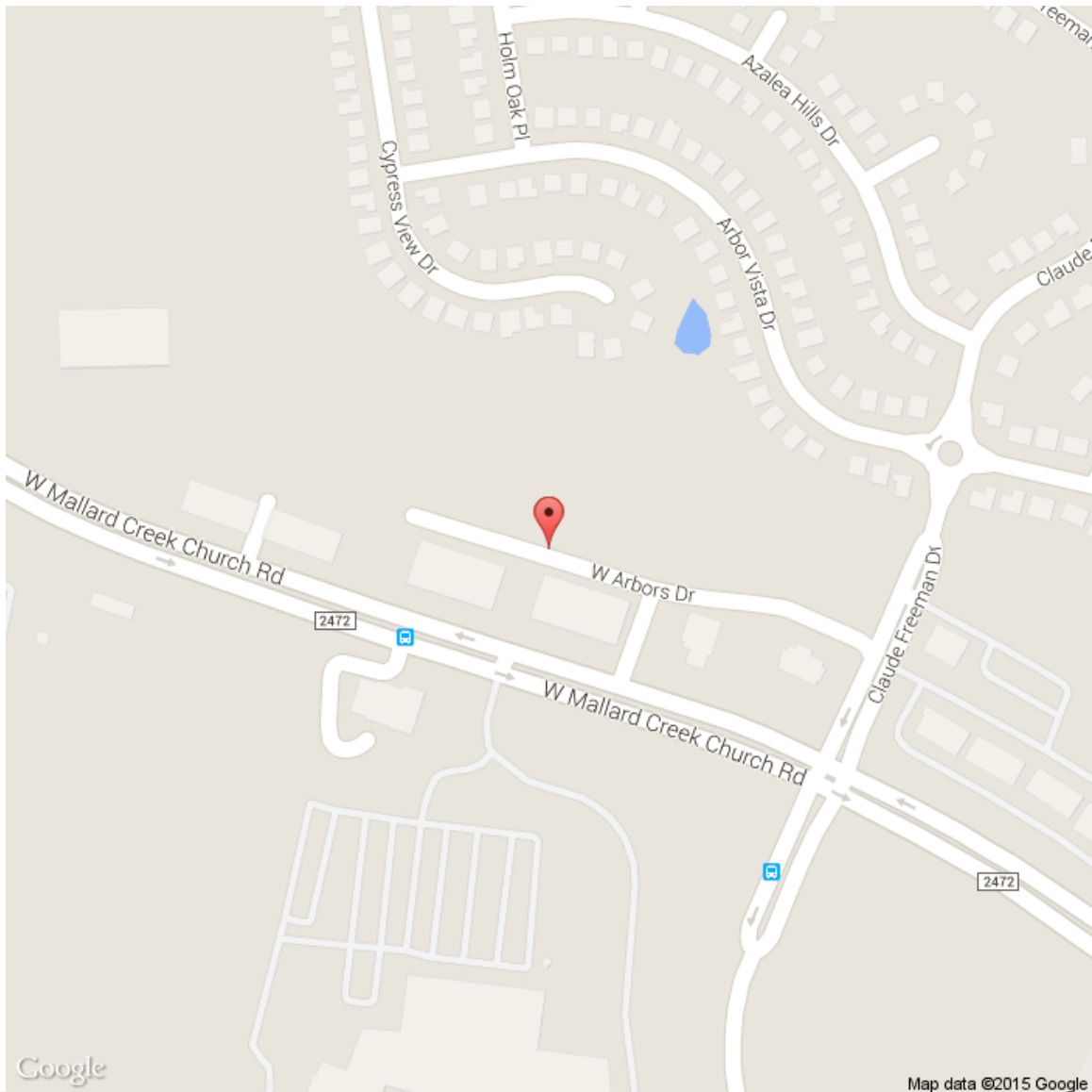
Type: Office
Subtype: Office Condominium, Standard Office, Inv., or Owner/User
Year Built: 2007
Construction Status: Existing
Zoning: MUDD-O
Property User: Any User
Class: B
of Elevators: 1
Parking: Ample

Comments

End Cap Office Condo in beautiful Arbors Professional Center for Sale. This unit is one unit but has been divided to make two smaller offices. The larger of the two is 1250sf and the smaller end cap is 950sf. They are easily returned to one unit of 2200sf. Great for owner occupant who wants to lease the other unit out for additional rental income.

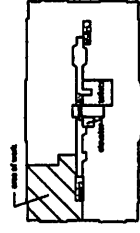
Lynette Glenn
704.877.5144
Lynette@highlandrealtyltd.com

Arbors Professional Center - Office Condo For Sale



2200 65F

CAM: \$2109.00 QTLy



1	FIRE ALARM PLAN
FA-1	1/4" = 1'-0"

KEY PLAN

[illegible]

Aloha Learning Center
Interior Uplift for:
2315 West Auburn Drive
Overliffe, NC 28662

Company: *WCB*
Project No: 14-008
Date Drawn: 10/1/70
Sheet Title: FIRE ALARM PLAN

FA-1

WILLIAM E. BRUCE
Construction Consultants
8501-A TOWER POINT DRIVE
Charlotte, NC 28227
Phone (704) 846-3377, Fax (704) 846-4866

