

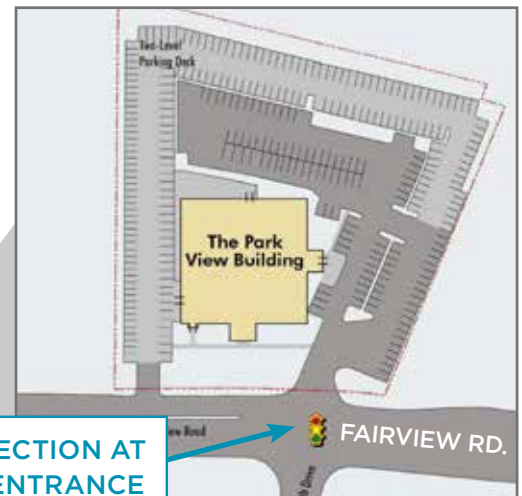
The Parkview Building



5821 Fairview Road | Charlotte, NC 28209

500 to 15,000 sq ft available with move-in ready options

- Located in the heart of South Park
- Excellent parking: both covered and surface available (3.5 per 1,000 SF ratio)
- Building is located at lit intersection with easy ingress/egress to both directions
- Walking distance from South Park mall and numerous other shopping, restaurant and hotel options.
- New restaurant located on the ground floor
- Additional ground floor retail space available



LIT INTERSECTION AT BUILDING ENTRANCE



Kris Westmoreland

kris.westmoreland@cushwake.com
+1 704 335 4440

Grant Keyes

grant.keyes@cushwake.com
+1 704 887 3021

550 S. Tryon St. | Suite 3400
Charlotte, NC 28202

cushmanwakefield.com



AREA AMENITIES



Within approximately 1 mile from Parkview, tenants have access to several area amenities, restaurants, housing options, hotels, and daycare centers



PARKING

TOTAL PARKING SPACES
FOR THE PARKVIEW BUILDING:
440 (3.5 PER 1,000 SF)

For more information, contact:

Kris Westmoreland
kris.westmoreland@cushwake.com
+1 704 335 4440

Grant Keyes
grant.keyes@cushwake.com
+1 704 887 3021

550 S. Tryon St. | Suite 3400
Charlotte, NC 28202
cushmanwakefield.com

