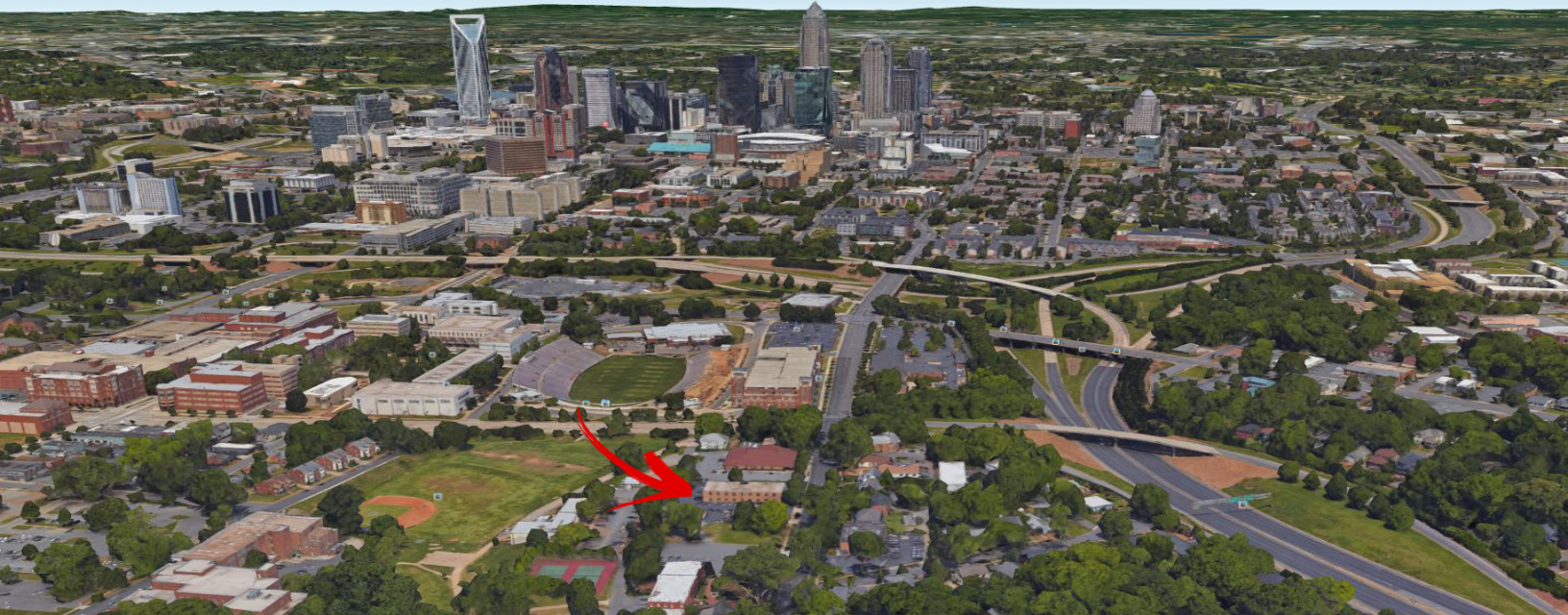


FOR SALE > DEVELOPMENT SITE



1420 E. 7th Street

1420 E. 7TH STREET, CHARLOTTE, NC



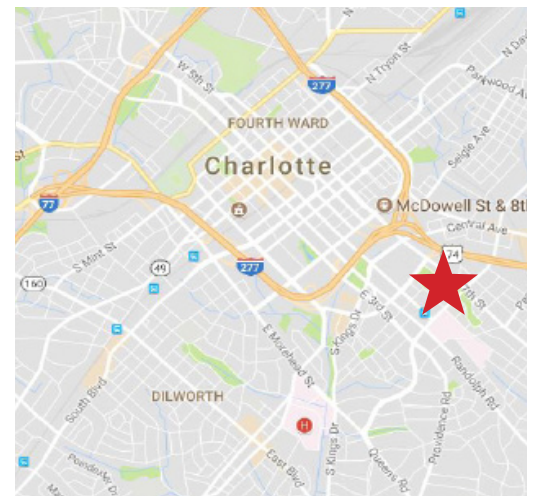
Property Summary >

1420 E. 7th Street consists of ± 0.9166 acres and has a $\pm 12,400$ SF office building with $\pm 4,000$ additional SF in two smaller office buildings. The property is located in the Elizabeth area of Charlotte and is convenient to Presbyterian Medical Center, Carolinas Medical Center, and Mercy Hospital.

Located in the Elizabeth neighborhood, the property is 0.2 miles from East Independence Blvd. and 0.5 miles from I-277.

Building Amenities >

- > ± 0.9166 acres
- > $\pm 12,400$ SF building
- > $\pm 4,000$ SF in two smaller buildings
- > Tax parcel numbers
 - > 08-019-104
 - > 08-019-102
- > Access from Armory Drive and 7th Street
- > 2 miles from I-77
- > 0.2 miles from East Independence Blvd.
- > 0.9 Miles from Mercy Hospital
- > Zoning 0-2
- > Approximately 72 auto parking spaces



LAWRENCE M. SHAW, SIOR
704 409 2360
CHARLOTTE, NC
lawrence.shaw@colliers.com

BRAD GROW, SIOR
704 409 2365
CHARLOTTE, NC
brad.grow@colliers.com

COLLIERS INTERNATIONAL
301 S. College Street, Suite 3350
Charlotte, NC 28202
www.colliers.com

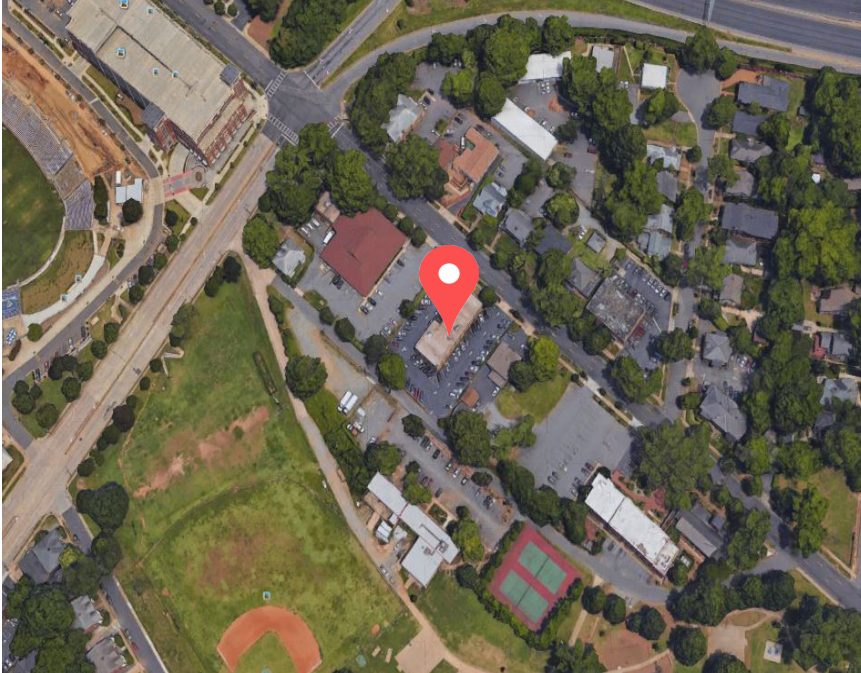
1420 E. 7th Street >



Contact Us

LAWRENCE M. SHAW, SIOR
704 409 2360
CHARLOTTE, NC
lawrence.shaw@colliers.com

BRAD GROW, SIOR
704 409 2365
CHARLOTTE, NC
brad.grow@colliers.com



COLLIERS INTERNATIONAL
301 S. College Street, Suite 3350
Charlotte, NC 28202
www.colliers.com

The information contained herein has either been given to us by the owner of the property or has been obtained from sources that we deem reliable. We have no reason to doubt its accuracy, but we do not guarantee it. This property is subject to prior sale, lease, price change or withdrawal without notice. Note: Broker participation is welcomed. Compensation is offered to buyer/tenant representative.

