

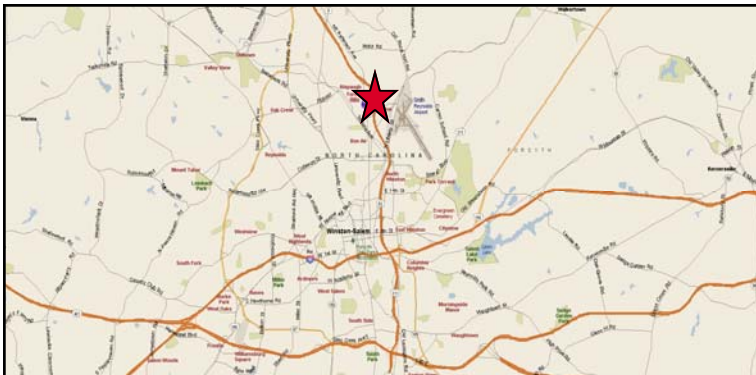
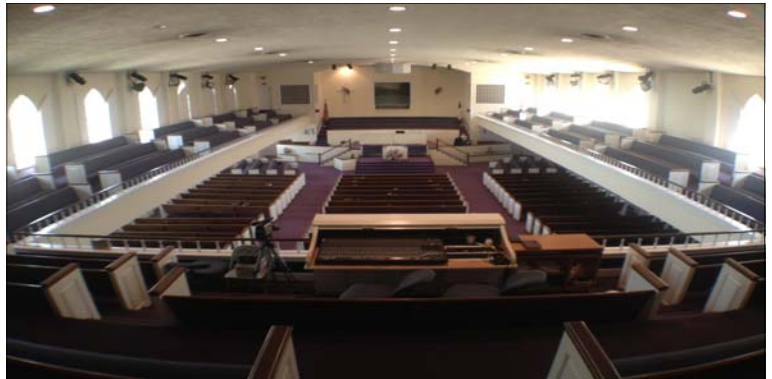
Woodland Baptist Church

School & Other Facilities

3665 Patterson Avenue, Winston Salem, NC

Property Information

- Total Church Buildings: 63,686 Sq. Ft.
Total School Buildings: 48,553 Sq. Ft.
Total all Buildings: 112,239 Sq. Ft.
- 12.23 +/- acres
- Will consider sub-dividing
- 1 block south of U.S. Hwy. 52 interchange (Future I-74)
- Year Built: Main Church—1961
Gymnasium—1970
School—1978
- Main Sanctuary seats 1500 +/-
- School capacity for over 650 students



FOR SALE

\$2,995,000

NAI Piedmont Triad

Commercial Real Estate Services, Worldwide.

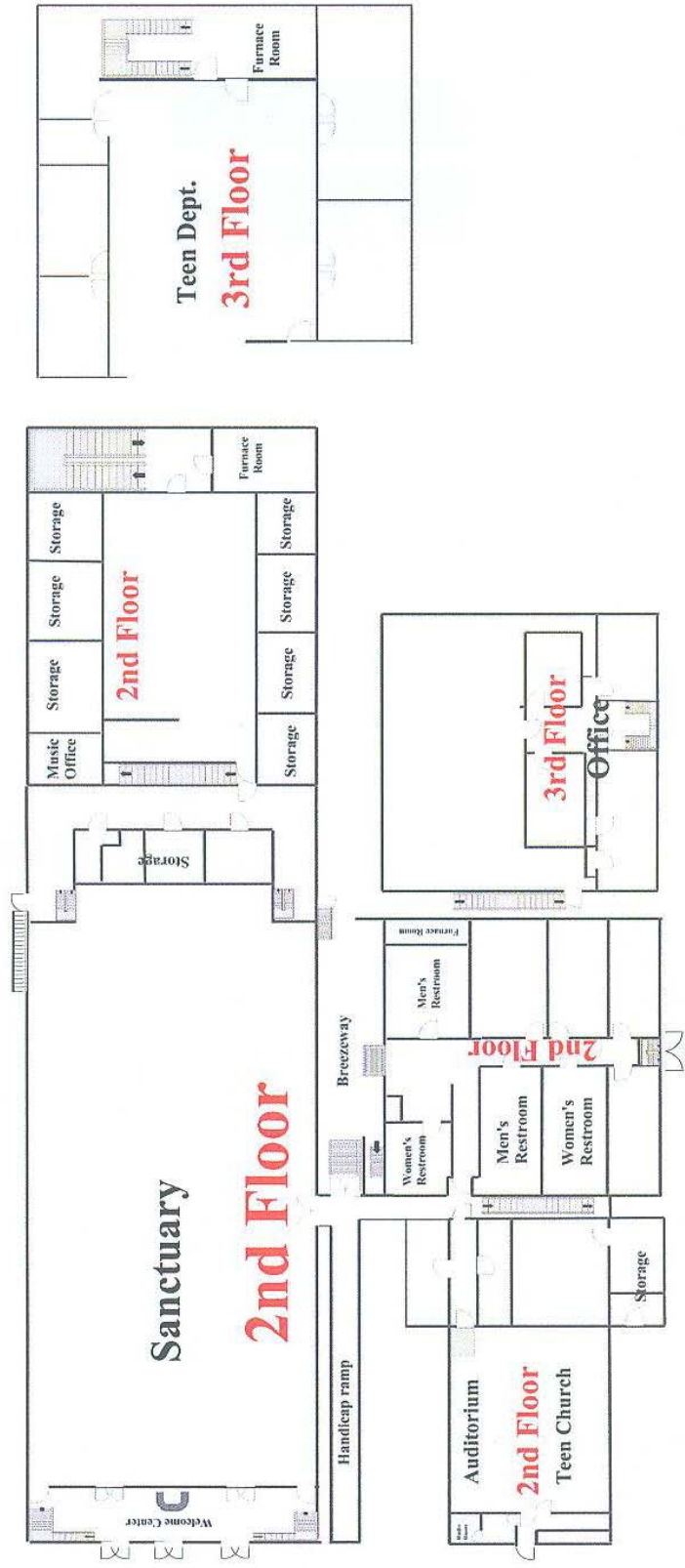
Contact information

Sam Munday
NAI Piedmont Triad
336 414 6141
smunday@naipt.com
www.naipt.com

Rani Hussami, CCIM
336 202 2544
rhussami@naipt.com

The information contained herein has been given to us by the owner of the property or other sources we deem reliable. We have no reason to doubt its accuracy, but we do not guarantee it. All information should be verified prior to purchase or lease.





3665 Basement Layout

