



retail
Experience Great Solutions®

FOR LEASE



Westerville Daycare Building

1255 County Line Road
Westerville, Ohio 43081

- +/- 7,680 SF single-tenant building
- +/- 1.326 acre lot
- 36 parking spaces (5.35 per 1,000 SF)
- Signalized intersection
- 10,627 ADT on County Line Road
- 23,997 ADT on Sunbury Road
- Built in 1999
- Intersection improvements and Sunbury Road widening to be completed Fall 2017



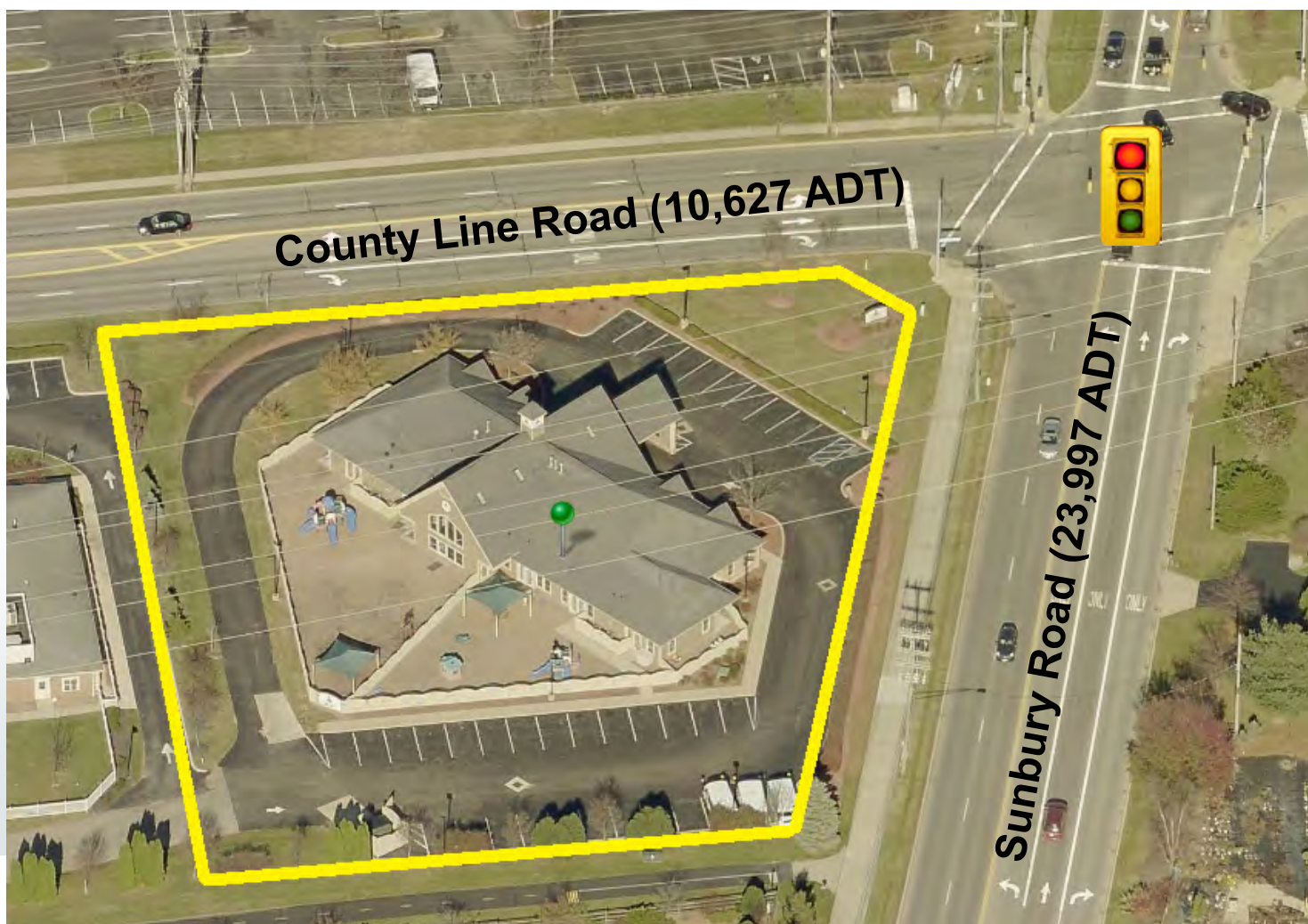
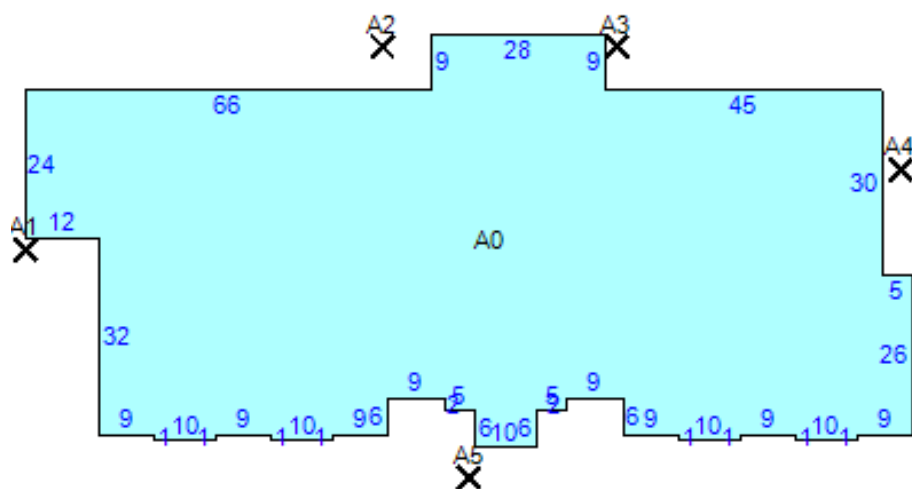
Contact:
Matt Cooper
614.334.7831 DIRECT
614.403.4732 MOBILE
mcooper@equity.net

Contact:
Jim Perry
614.334.7847 DIRECT
740.501.2987 MOBILE
jperry@equity.net

Equity, LLC | O: 614.802.2900 | F: 614.675.1705 | www.equity.net
4653 Trueman Boulevard, Suite 100 | Hilliard, OH 43026



Demographics	1 mi.	3 mi.	5 mi.
Population (2016 est.)	5,269	54,041	145,897
Avg. HH Income (2016 est.)	\$154,106	\$113,553	\$98,371
Daytime Population	957	22,843	86,397





retail
Experience Great Solutions®

