

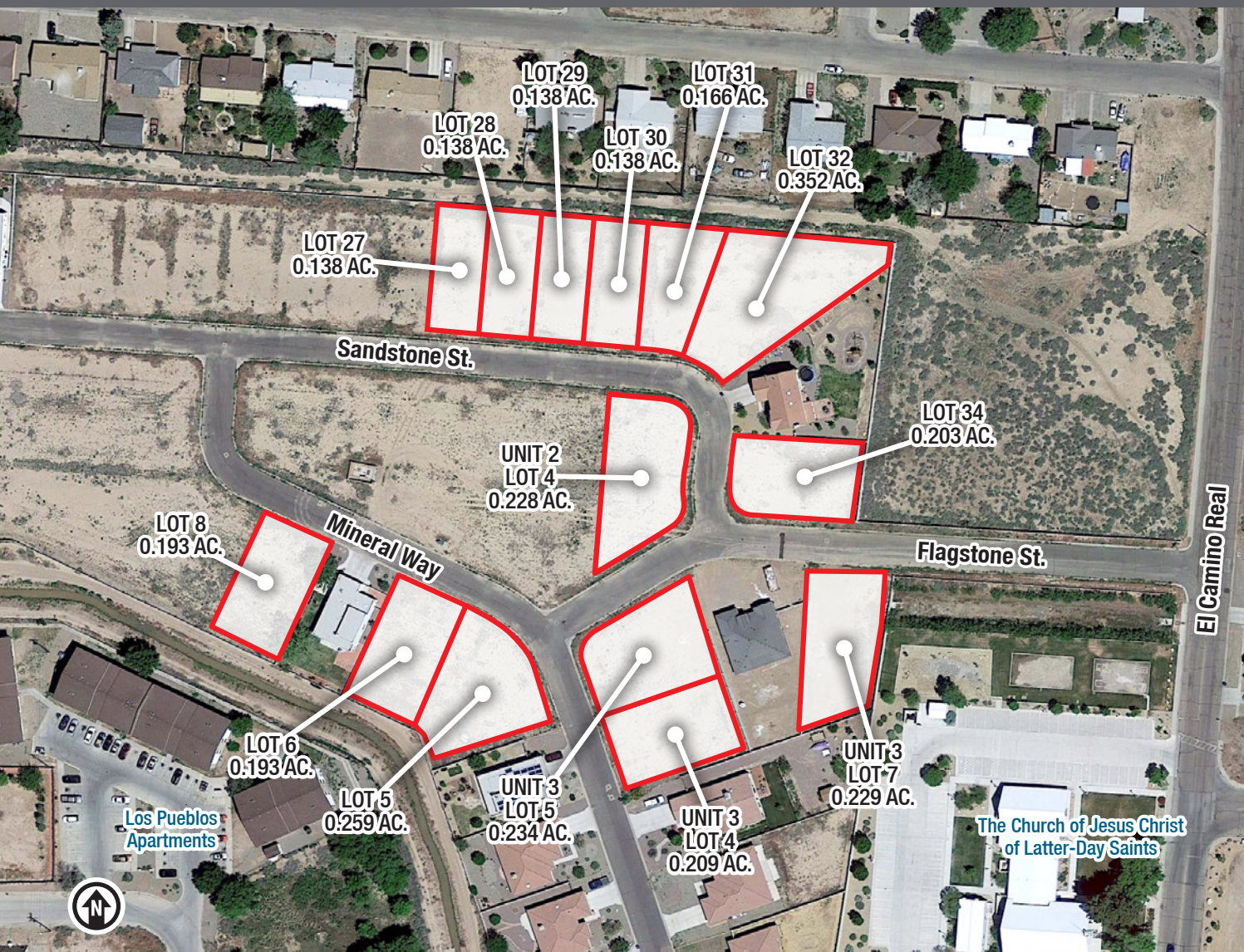
# For Sale

## Development Ready Subdivision

14 SINGLE-FAMILY LOTS IN PROSPECTORS RIDGE

Sandstone, Flagstone & Mineral Way Lots | Socorro, NM 87801

NWQ El Camino Real & Bullock Blvd.



±2.818 Acre  
Subdivision



Sale Price:  
\$515,000

### AVAILABLE

- Single-Family Lots from  
±0.138 - 0.352 Acres

### ZONING

- R-1

### PROPERTY HIGHLIGHTS

- Full underground utilities  
available to each lot
- Compacted & graded lots primed  
for development
- 1.5 miles to New Mexico Institute  
of Mining & Technology  
(New Mexico Tech)
- Adjacent to an established  
neighborhood



This property is in a  
**HUB Zone** For small companies operating/  
employing people in Historically  
Underutilized Business Zones.



**NA**SunVista

got space

Alex Pulliam  
alex@sunvista.com  
505 350 5729

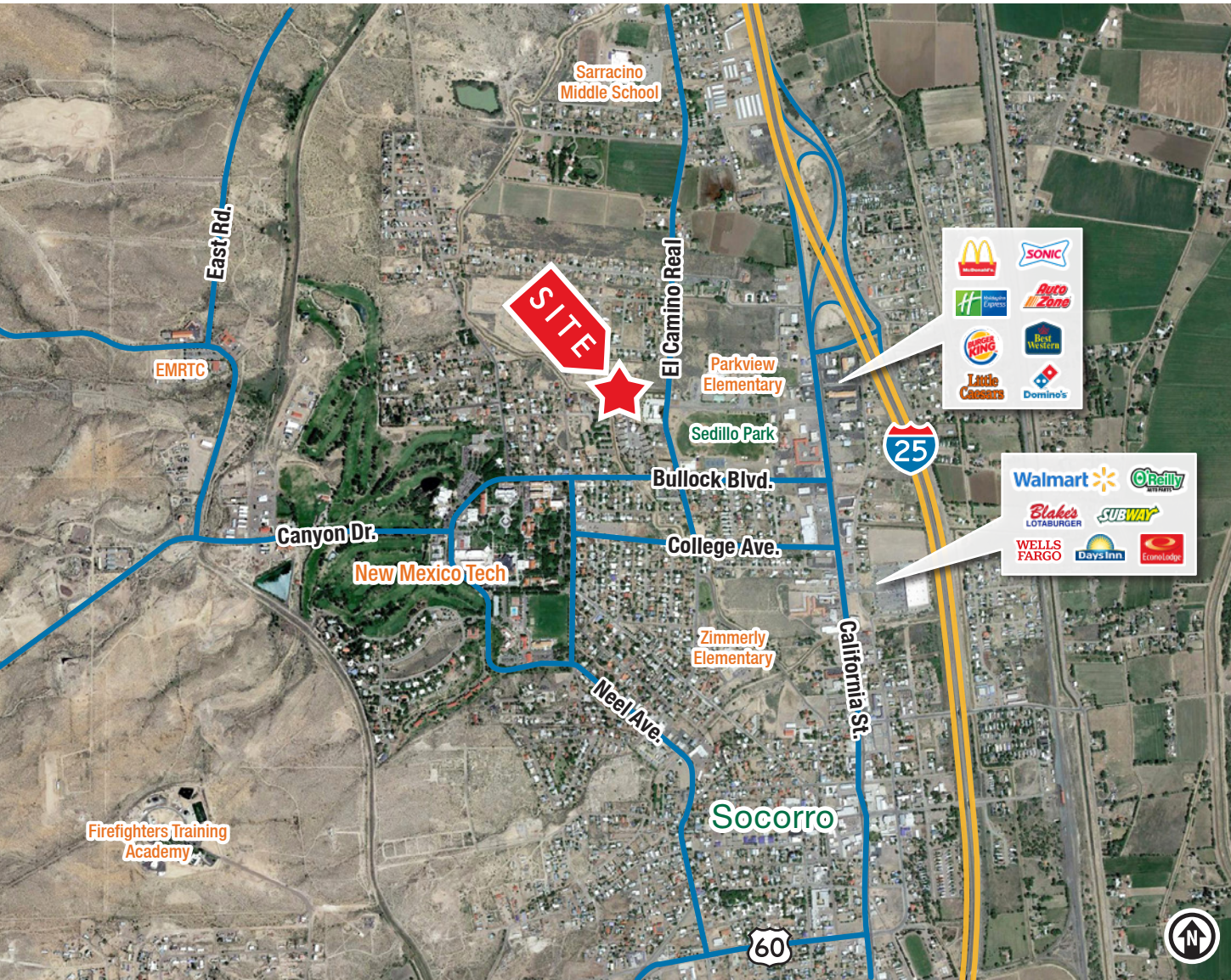


# For Sale

## Development Ready Subdivision

### 14 SINGLE-FAMILY LOTS IN PROSPECTORS RIDGE

Sandstone, Flagstone & Mineral Way Lots | Socorro, NM 87801



## LOCATION

Demographics	2 mile	5 mile	10 mile
Total Population	8,895	9,592	11,331
Average HH Income	\$56,447	\$56,745	\$57,354
Daytime Employment	4,048	4,707	4,832

2021 Forecasted by Esri





## Socorro | History, Technology and Enchanted Skies

Truly a traveler's oasis, **Socorro** has it all: small town charm rich in history and culture with an economy based upon cutting edge technology. Located in the hub of New Mexico off of Interstate 25, it is blessed with many restaurants, hotels and things to do and see. Socorro's economy is fueled by technology based enterprises. The Karl G. Jansky Very Large Array radio telescopes, New Mexico Institute of Mining and Technology and White Sands Missile Range attract scientists and engineers from across the globe. Agriculture and commercial businesses bolster growth, and artists and musicians are attracted to Socorro's southwestern charms.

### Socorro by the Numbers (ESRI 2021 Demographics)



"A RESEARCH INSTITUTION THAT HAPPENS TO HAVE A UNIVERSITY"



### New Mexico Tech

- New Mexico Tech has more than a dozen research divisions that work with private industry, government agencies and other universities.
- Nearly all professors in every academic department maintain active research projects that involve undergraduate students.
- Research partners include General Electric, Yates Petroleum, NASA, the national laboratories and numerous other high-tech companies worldwide.
- The NM Tech Energetic Materials Research Testing Center (EMRTC) hosts terrorism-response training classes for first responders from around the nation and the world.



### A THRIVING TOURIST BUSINESS

The Bosque del Apache's Festival of the Cranes attracts many visitors, and both the Bosque and Sevilleta National Wildlife Refuge contribute funds to the economy. Other attractions include Box Canyon, El Camino Real Historic Trail Site, Fort Craig, San Lorenzo Canyon, and the San Miguel Mission.

### MAJOR EMPLOYERS

Aerojet Rocketdyne  
Alamo Navajo Health Center  
City of Socorro  
Dicaperl  
UPS Customer Center  
National Radio Astronomy Observatory  
New Mexico Bureau of Geology and Mineral Resources  
New Mexico Tech

