

**FOR LEASE**

3208 Carlisle Blvd. NE | Albuquerque, NM 87110

NEQ Carlisle Blvd. & Candelaria Rd. NE

# Plug & Play Dental Office

CARLISLE  
EXECUTIVE OFFICES



## LEASE RATE

- \$13.00/SF Modified Gross  
Tenant pays gas, electric,  
and janitorial

## AVAILABLE

- ±1,400 RSF

## IDO ZONING

- MX-L, Low Intensity

## PROPERTY HIGHLIGHTS

- 5:1,000 parking
- Five private operatories
- Immediate availability
- Most of the dental equipment  
already in place
- On-site landlord
- Signage available

got space

**NAI SunVista**

6801 Jefferson NE | Suite 200 | Albuquerque, NM 87109

505 878 0001 [sunvista.com](http://sunvista.com)



FOR MORE INFORMATION:

**Lisa Mercer**  
[lisa@sunvista.com](mailto:lisa@sunvista.com)  
505 235 8503

**Martha Carpenter**  
[martha@sunvista.com](mailto:martha@sunvista.com)  
505 228 0154



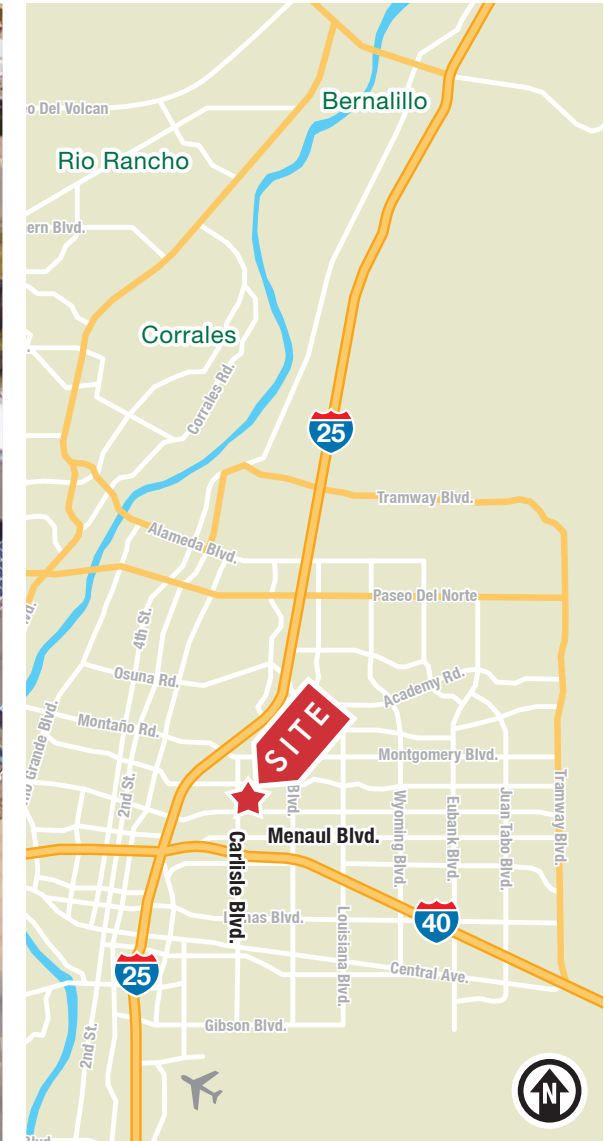
**FOR LEASE**

3208 Carlisle Blvd. NE | Albuquerque, NM 87110

NEQ Carlisle Blvd. & Candelaria Rd. NE

# Plug & Play Dental Office

CARLISLE  
EXECUTIVE OFFICES



**NA SunVista** 505 878 0001 [sunvista.com](http://sunvista.com)

THE INFORMATION CONTAINED IS BELIEVED RELIABLE, WHILE WE DO NOT DOUBT THE ACCURACY, WE HAVE NOT VERIFIED IT AND MAKE NO GUARANTEE, WARRANTY OR REPRESENTATION ABOUT IT. IT IS YOUR RESPONSIBILITY TO INDEPENDENTLY CONFIRM ITS ACCURACY AND COMPLETENESS. ANY PROJECTION, OPINION, ASSUMPTION OR ESTIMATED USES ARE FOR EXAMPLE ONLY AND DO NOT REPRESENT THE CURRENT OR FUTURE PERFORMANCE OF THE PROPERTY. THE VALUE OF THIS TRANSACTION TO YOU DEPENDS ON MANY FACTORS WHICH SHOULD BE EVALUATED BY YOUR TAX, FINANCIAL, AND LEGAL COUNSEL. YOU AND YOUR COUNSEL SHOULD CONDUCT A CAREFUL INDEPENDENT INVESTIGATION OF THE PROPERTY TO DETERMINE THAT IT IS SUITABLE TO YOUR NEEDS.

FOR MORE INFORMATION:

**Lisa Mercer**  
[lisa@sunvista.com](mailto:lisa@sunvista.com)  
505 235 8503

**Martha Carpenter**  
[martha@sunvista.com](mailto:martha@sunvista.com)  
505 228 0154



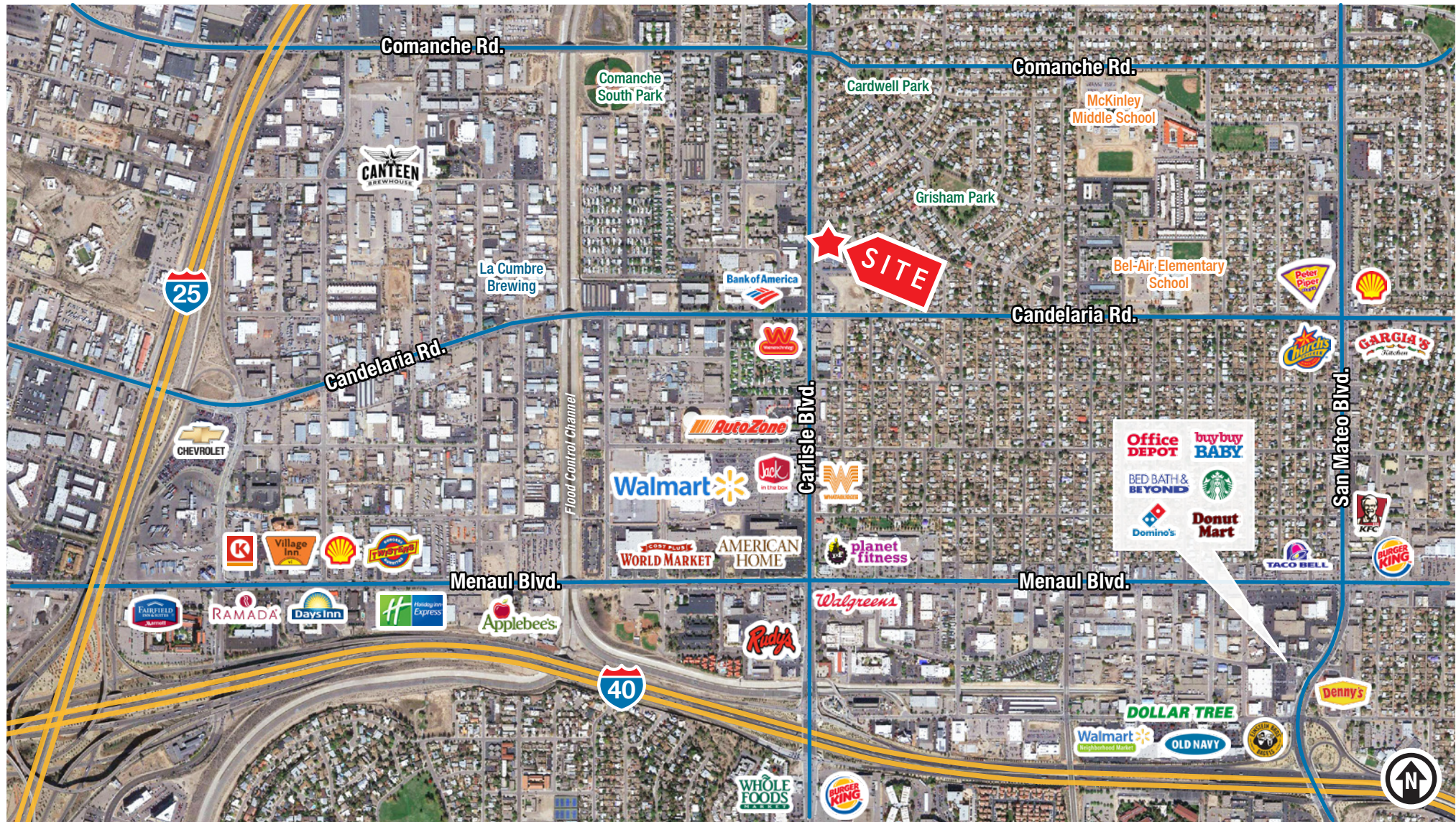
**FOR LEASE**

3208 Carlisle Blvd. NE | Albuquerque, NM 87110

NEQ Carlisle Blvd. & Candelaria Rd. NE

# Plug & Play Dental Office

CARLISLE  
EXECUTIVE OFFICES



**NA SunVista** 505 878 0001 [sunvista.com](http://sunvista.com)

THE INFORMATION CONTAINED IS BELIEVED RELIABLE. WHILE WE DO NOT DOUBT THE ACCURACY, WE HAVE NOT VERIFIED IT AND MAKE NO GUARANTEE, WARRANTY OR REPRESENTATION ABOUT IT. IT IS YOUR RESPONSIBILITY TO INDEPENDENTLY CONFIRM ITS ACCURACY AND COMPLETENESS. ANY PROJECTION, OPINION, ASSUMPTION OR ESTIMATED USES ARE FOR EXAMPLE ONLY AND DO NOT REPRESENT THE CURRENT OR FUTURE PERFORMANCE OF THE PROPERTY. THE VALUE OF THIS TRANSACTION TO YOU DEPENDS ON MANY FACTORS WHICH SHOULD BE EVALUATED BY YOUR TAX, FINANCIAL, AND LEGAL COUNSEL. YOU AND YOUR COUNSEL SHOULD CONDUCT A CAREFUL INDEPENDENT INVESTIGATION OF THE PROPERTY TO DETERMINE THAT IT IS SUITABLE TO YOUR NEEDS.

FOR MORE INFORMATION:

**Lisa Mercer**  
[lisa@sunvista.com](mailto:lisa@sunvista.com)  
505 235 8503

**Martha Carpenter**  
[martha@sunvista.com](mailto:martha@sunvista.com)  
505 228 0154



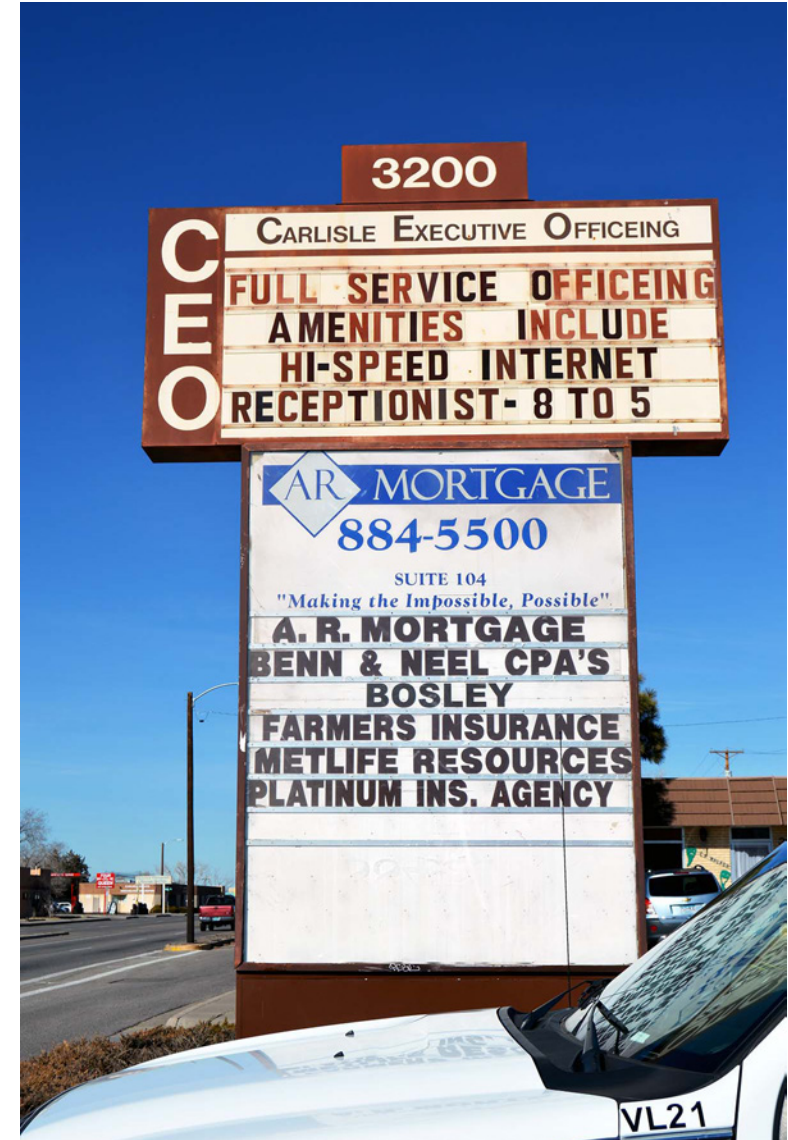
**FOR LEASE**

3208 Carlisle Blvd. NE | Albuquerque, NM 87110

NEQ Carlisle Blvd. & Candelaria Rd. NE

# Plug & Play Dental Office

CARLISLE  
EXECUTIVE OFFICES



**NAI SunVista** 505 878 0001 [sunvista.com](http://sunvista.com)

THE INFORMATION CONTAINED IS BELIEVED RELIABLE. WHILE WE DO NOT DOUBT THE ACCURACY, WE HAVE NOT VERIFIED IT AND MAKE NO GUARANTEE, WARRANTY OR REPRESENTATION ABOUT IT. IT IS YOUR RESPONSIBILITY TO INDEPENDENTLY CONFIRM ITS ACCURACY AND COMPLETENESS. ANY PROJECTION, OPINION, ASSUMPTION OR ESTIMATED USES ARE FOR EXAMPLE ONLY AND DO NOT REPRESENT THE CURRENT OR FUTURE PERFORMANCE OF THE PROPERTY. THE VALUE OF THIS TRANSACTION TO YOU DEPENDS ON MANY FACTORS WHICH SHOULD BE EVALUATED BY YOUR TAX, FINANCIAL, AND LEGAL COUNSEL. YOU AND YOUR COUNSEL SHOULD CONDUCT A CAREFUL INDEPENDENT INVESTIGATION OF THE PROPERTY TO DETERMINE THAT IT IS SUITABLE TO YOUR NEEDS.

FOR MORE INFORMATION:

**Lisa Mercer**  
[lisa@sunvista.com](mailto:lisa@sunvista.com)  
505 235 8503

**Martha Carpenter**  
[martha@sunvista.com](mailto:martha@sunvista.com)  
505 228 0154

**FOR LEASE**

3208 Carlisle Blvd. NE | Albuquerque, NM 87110

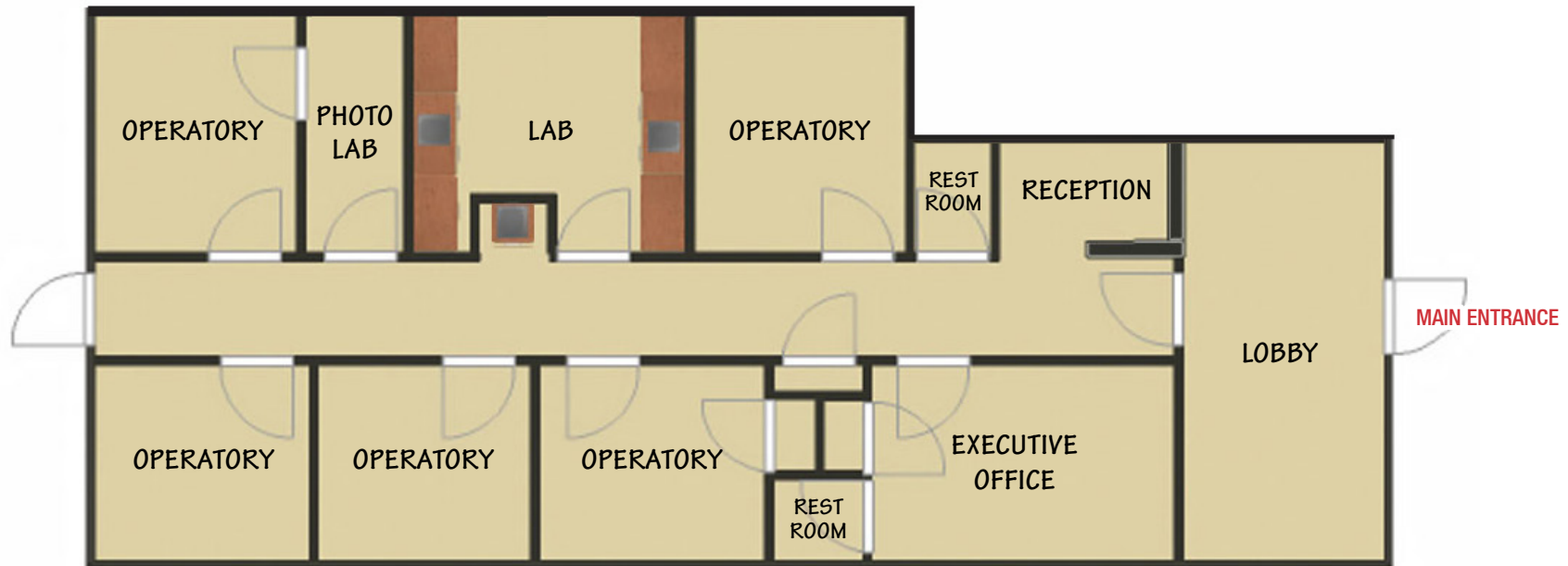
NEQ Carlisle Blvd. & Candelaria Rd. NE

# Plug & Play Dental Office

CARLISLE  
EXECUTIVE OFFICES

AVAILABLE

±1,400 RSF



**NAI SunVista** 505 878 0001 [sunvista.com](http://sunvista.com)

THE INFORMATION CONTAINED IS BELIEVED RELIABLE. WHILE WE DO NOT DOUBT THE ACCURACY, WE HAVE NOT VERIFIED IT AND MAKE NO GUARANTEE, WARRANTY OR REPRESENTATION ABOUT IT. IT IS YOUR RESPONSIBILITY TO INDEPENDENTLY CONFIRM ITS ACCURACY AND COMPLETENESS. ANY PROJECTION, OPINION, ASSUMPTION OR ESTIMATED USES ARE FOR EXAMPLE ONLY AND DO NOT REPRESENT THE CURRENT OR FUTURE PERFORMANCE OF THE PROPERTY. THE VALUE OF THIS TRANSACTION TO YOU DEPENDS ON MANY FACTORS WHICH SHOULD BE EVALUATED BY YOUR TAX, FINANCIAL, AND LEGAL COUNSEL. YOU AND YOUR COUNSEL SHOULD CONDUCT A CAREFUL INDEPENDENT INVESTIGATION OF THE PROPERTY TO DETERMINE THAT IT IS SUITABLE TO YOUR NEEDS.

FOR MORE INFORMATION:

**Lisa Mercer**  
[lisa@sunvista.com](mailto:lisa@sunvista.com)  
505 235 8503

**Martha Carpenter**  
[martha@sunvista.com](mailto:martha@sunvista.com)  
505 228 0154