

FOR SALE

1009 Seneca Lane | Carlsbad, NM 88220

SWQ Seneca Ln. & County Rd. 701

Carlsbad Residential Land

DEVELOPMENT OPPORTUNITY
WITH MUNICIPAL UTILITIES



SALE PRICE

- See Advisor

AVAILABLE

- Land: ±35.94 Acres

ZONING

- R-R

PROPERTY HIGHLIGHTS

- City of Carlsbad utilities present at site
- Residential plat in development
- High demand for housing in Carlsbad
- Three minutes to US Highway 285
- Ready for development

got space

NAI SunVista

6801 Jefferson NE | Suite 200 | Albuquerque, NM 87109

505 878 0001 sunnvista.com



FOR MORE INFORMATION:

Isaac Romero

isaac@sunvista.com

505 998 1571

FOR SALE

1009 Seneca Lane | Carlsbad, NM 88220

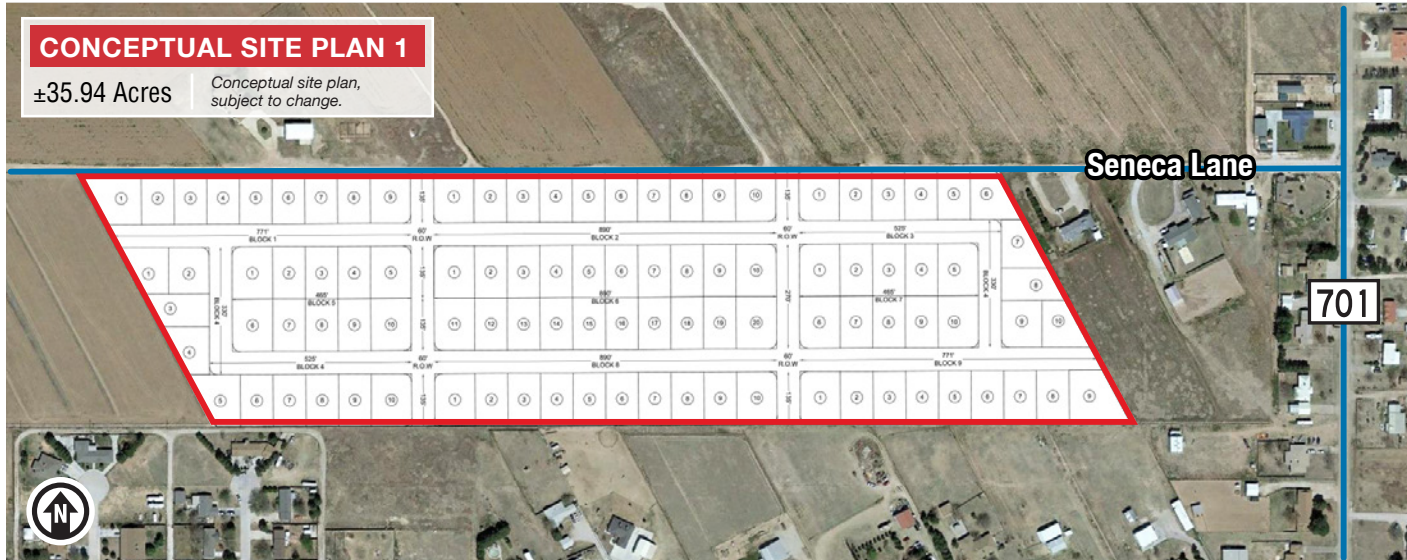
SWQ Seneca Ln. & County Rd. 701

Carlsbad Residential Land

DEVELOPMENT OPPORTUNITY WITH MUNICIPAL UTILITIES

CONCEPTUAL SITE PLAN 1

±35.94 Acres

Conceptual site plan,
subject to change.**CONCEPTUAL SITE PLAN 2**

±35.94 Acres

Conceptual site plan,
subject to change.

2019 Demographics	2 mile	5 mile	10 mile
Total Population	6,343	24,712	37,450
Average HH Income	\$69,929	\$63,679	\$75,360
Daytime Employment	1,784	10,780	16,066
2019 Forecasted by Esri			



NA SunVista 505 878 0001 sunvista.com

THE INFORMATION CONTAINED IS BELIEVED RELIABLE. WHILE WE DO NOT DOUBT THE ACCURACY, WE HAVE NOT VERIFIED IT AND MAKE NO GUARANTEE, WARRANTY OR REPRESENTATION ABOUT IT. IT IS YOUR RESPONSIBILITY TO INDEPENDENTLY CONFIRM ITS ACCURACY AND COMPLETENESS. ANY PROJECTION, OPINION, ASSUMPTION OR ESTIMATED USES ARE FOR EXAMPLE ONLY AND DO NOT REPRESENT THE CURRENT OR FUTURE PERFORMANCE OF THE PROPERTY. THE VALUE OF THIS TRANSACTION TO YOU DEPENDS ON MANY FACTORS WHICH SHOULD BE EVALUATED BY YOUR TAX, FINANCIAL, AND LEGAL COUNSEL. YOU AND YOUR COUNSEL SHOULD CONDUCT A CAREFUL INDEPENDENT INVESTIGATION OF THE PROPERTY TO DETERMINE THAT IT IS SUITABLE TO YOUR NEEDS.

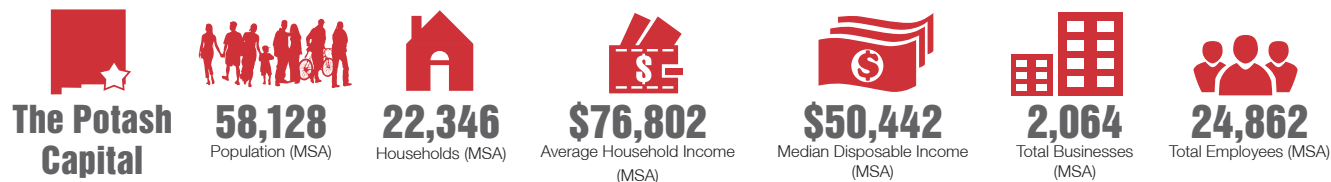
FOR MORE INFORMATION:

Isaac Romero
isaac@sunvista.com
505 998 1571

Carlsbad | The Pearl on the Pecos

Most of **Carlsbad's** development was due to irrigation water. Local cattlemen recognized the value of diverting water from the Pecos River to the grazing lands on Eddy's Halagueno Ranch. The economy of the Carlsbad area is based primarily on the mineral extraction sector; the city overlies the rich oil- and gas-producing formations of the Permian Basin and produces more potash than any other location in the United States. Carlsbad is home to the DOE's Carlsbad Field Office which operates the Waste Isolation Pilot Plant to safely store the transuranic nuclear wastes from the nation's defense sites. Tourism is a major factor with Carlsbad Caverns National Park, Guadalupe Mountains National Park, Lincoln National Forest, the Living Desert Zoo and Gardens State Park, and the annual Christmas on the Pecos Light Show all located within fifty miles of the city.

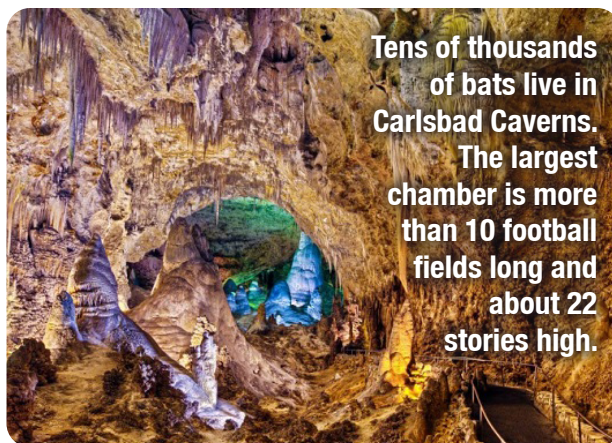
Carlsbad by the Numbers (ESRI 2020 Demographics)



CARLSBAD IS A HUB FOR POTASH MINING, PETROLEUM PRODUCTION & TOURISM

LARGEST EMPLOYERS IN CARLSBAD

- 1 Washington Tru Solutions
- 2 Carlsbad Municipal Schools
- 3 Mosaic Potash Carlsbad
- 4 Constructors, Inc.
- 5 Carlsbad Medical Center
- 6 Intrepid Potash
- 7 Landsun Homes, Inc.
- 8 Lowe's
- 9 NMSU-Carlsbad
- 10 Lakeview Christian Home



Tens of thousands of bats live in Carlsbad Caverns. The largest chamber is more than 10 football fields long and about 22 stories high.



Carlsbad is home to the DOE's Carlsbad Field Office which operates the Waste Isolation Pilot Plant (WIPP) to safely store the transuranic nuclear wastes from the nation's defense sites.

