

Industrial For Lease: 2850 Sherwin Ave

2850 Sherwin Ave, Unit D, Ventura, CA 93003

Listing ID:	24228364
Status:	Available
Property Type:	Industrial
Space Type:	Industrial
Total Available:	1,308 SF
Contiguous:	1,308 SF
Min Divisible:	
Lease Rate:	\$1.15 Monthly/SF
Base Monthly Rate:	\$1,504 Monthly
Lease Type:	Industrial Gross



Overview/Comments

Highly-Improved Industrial Unit Available for Immediate Occupancy
Freeway Convenient May Be Combined with Adjacent Unit for 2,616 SF

General Information

Tax ID/APN:	135030024	Class of Space:	
Office Type:	Warehouse/Office	Gross Building Area:	9,225 SF
Zoning:	M1	Building/Unit Size (RSF):	9,225 SF
Building Name:	2850 Sherwin Ave	Usable Size:	9,225 SF

Available Space

Floor/Suite:	1 / D	Date Available:	02/10/2020
Space Available:	1,308 SF	Lease Rate:	\$13.80 Annual/SF
Minimum Divisible:		Lease Type:	Industrial Gross
Maximum Contiguous:	1,308 SF	Parking Total:	2
Space Type:	Direct	Parking Ratio:	1.5

Building Related

Total Number of Buildings:	1	Elevators Present:	
Number of Stories:	1	Elevators Total:	0
Typical SF / Floor:	9,225 SF	Sprinklers:	Yes
Year Built:	2003	Parking Ratio:	
Year Renovated:		Parking Total:	
Construction:	Masonry		

Land Related

Zoning:	M1	Sewer Type:	
Water Service:		Land Area SF:	24,829 SF

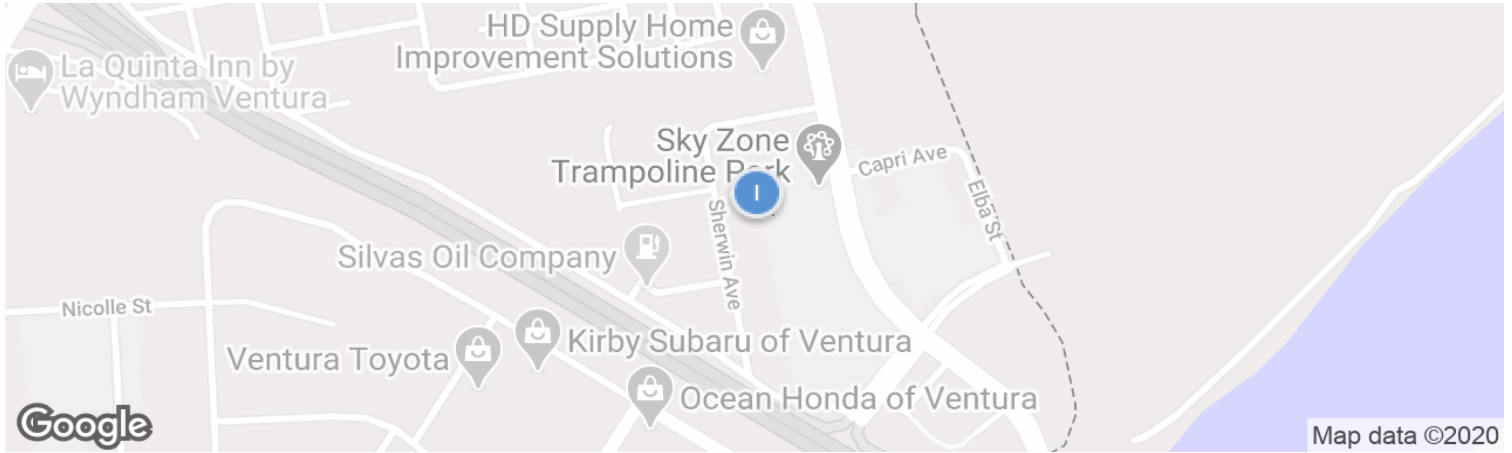
Kent Pierce
kent@equitycommercial.com
805-384-9500



Location

Address: **2850 Sherwin Ave, Unit D Ventura, CA 93003**

County: **VENTURA**



Property Contacts

Kent Pierce

805-384-9500

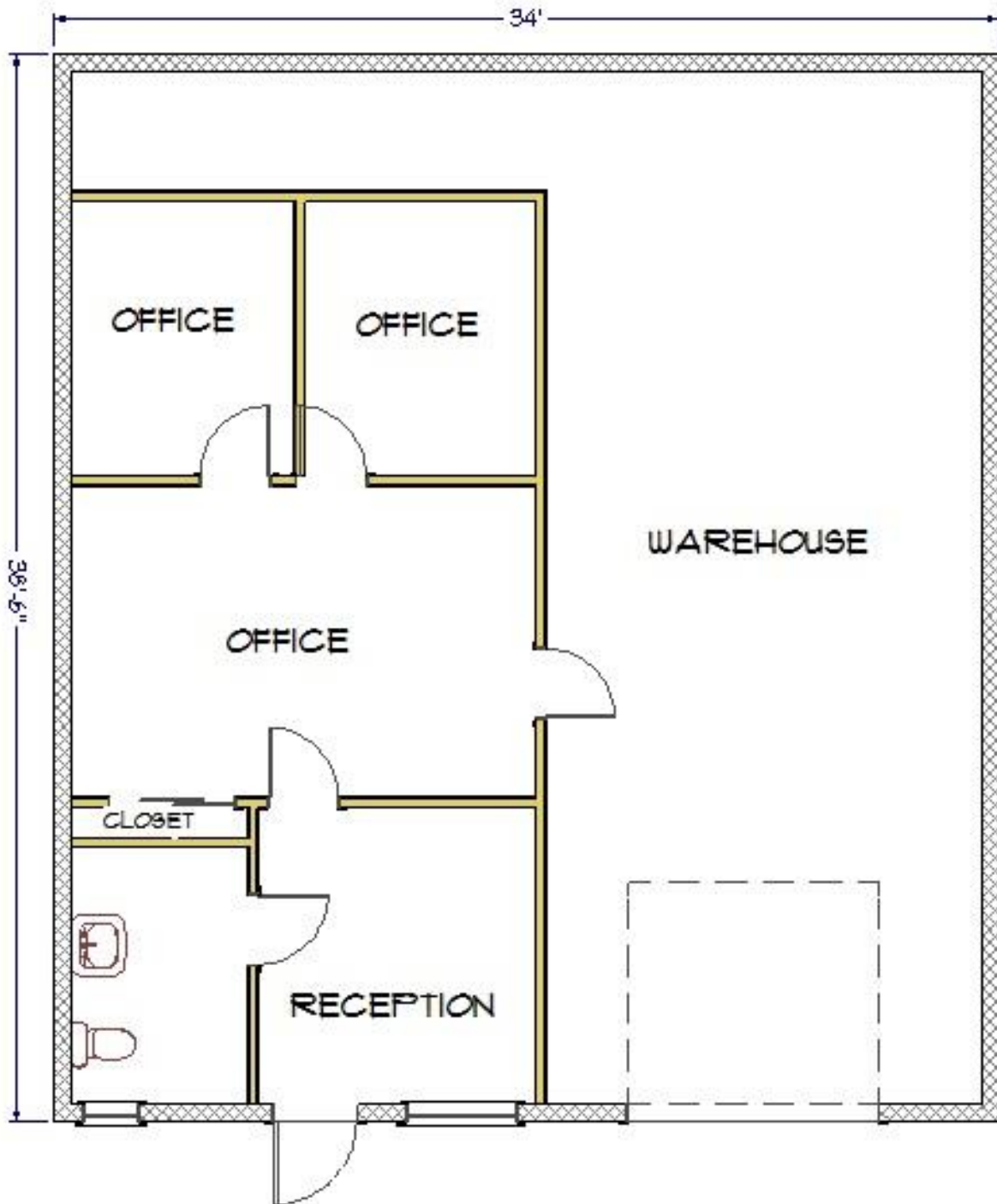
kent@equitycommercial.com



Kent Pierce
kent@equitycommercial.com
805-384-9500



FLOORPLAN



2850 SHERWIN AVE., UNIT D
VENTURA, CALIFORNIA