

**Property Information**

1203 Flynn Rd
1203 Flynn Rd
Camarillo, CA 93012
Ventura / AIR - Camarillo

Type **Office**
Building Size **20,442 SF**
Building status: **Existing**
Year Built **2005**
Building Class **B**

Subtype
Parking Ratio **4:1,000**
Floors **2**
Elevators **1**
Construction

Zoning **M1**
Land Size **0.23 Acres**
Parcel: **160044001**

1

Equity Commercial - Kent Pierce 805-384-9500

AVAILABLE SPACE - For Sale

Type	Condo	Status	Cap Rate	List Price	Avail SF	Price/SQFT	Date Avail
Office	Condo (130)	Available		\$336,325	1,223	\$275.00	COE

Corner Suite, ground level unit with double-door entry onto lobby, kitchenette.

AVAILABLE SPACE - For Lease

Type: Suite	Sublease	Vacant	Avail SF	Min SF	Rate	Date Avail
Office: 150	No	Yes	1,003	1,003	\$2.10 MG	Now

1st floor office space with (4) private offices, break room and lobby area. Call Broker to show. Rate excludes U&J.

**Property Information**

1211 Flynn Rd
1211 Flynn Rd
Camarillo, CA 93012

Type **Industrial**
Building Size **27,992 SF**
Building status: **Existing**
Year Built **2006**

Subtype **Flex/R&D**
Clear Height **22 Feet**
Grade Doors **9**
Dock Doors **0**

Zoning **M1**
Land Size **0.40 Acres**
Parcel: **160044023,160044015,160044016,160044017,160044018,160044019,160044020,160044021,160044022**

2

Ventura / AIR - Camarillo

Office SF

Sprinklers

Yes

Equity Commercial - Kent Pierce 805-384-9500

AVAILABLE SPACE - For Lease

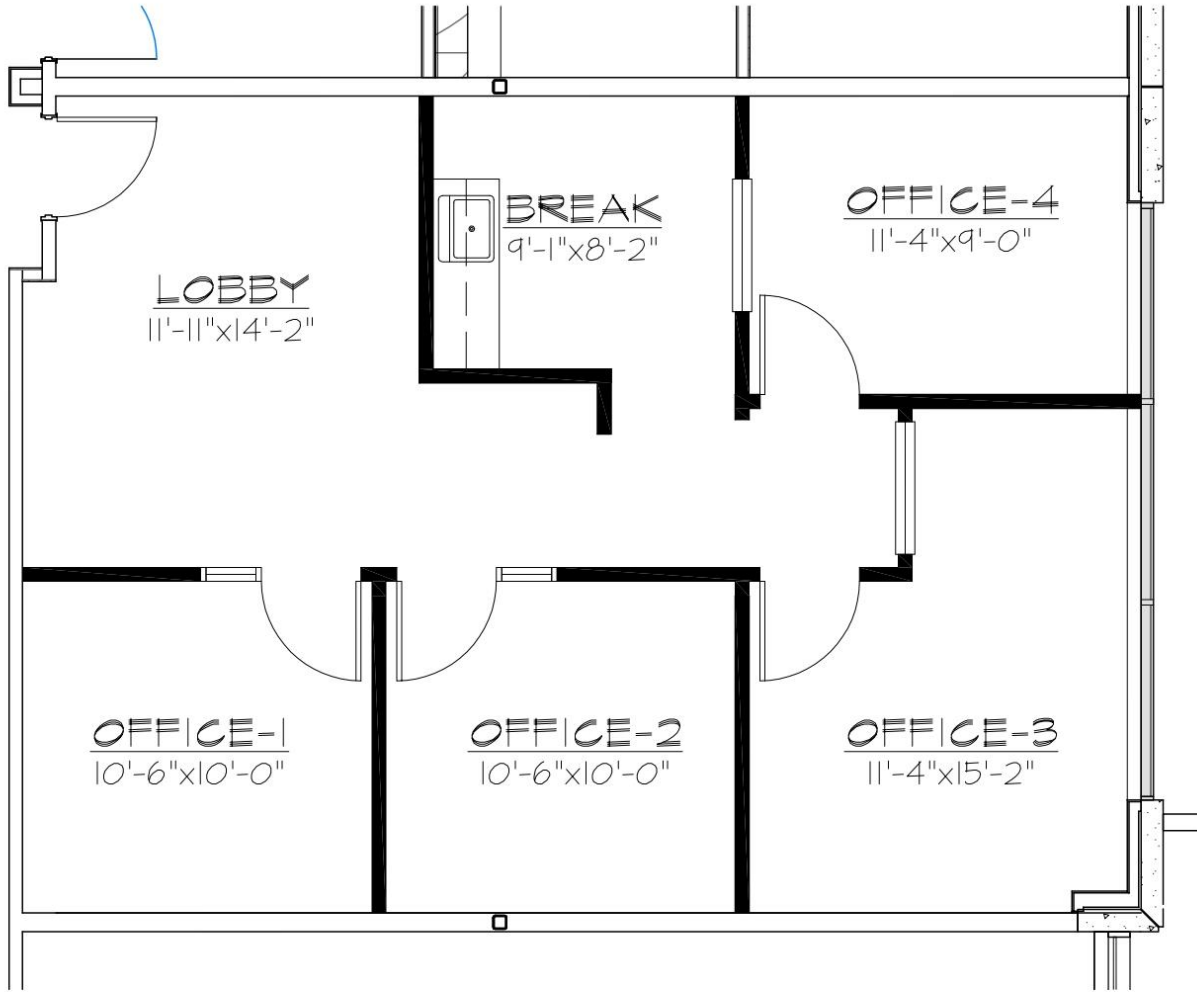
Type: Suite	Sublease	Avail SF	Rate	Date Avail	Clear Ht	Office SF	GL/DH	Power	Yard
Industrial: 106	No	2,592	\$1.35 G	Now	22'	1,246	1 / 0	A: 200 V: 120/208 O: 3 W: 4	No

Camarillo's Premier Business Location, Highest-Quality Construction, Well Maintained Mixed-Use Business Park, Convenient Freeway Access, Excellent Industrial/R&D/Flex Facility w/ Almost 50% Office, Dual-Zone HVAC

Kent Pierce
kent@equitycommercial.com
805-384-9500



FLOORPLAN



1203 FLYNN ROAD, SUITE #150 PROPOSED SPACE PLAN

SCALE: NTS

AUGUST 27, 2019



ALL MEASUREMENTS ARE APPROXIMATE AND SHOULD BE
INDEPENDENTLY VERIFIED

1203 FLYNN ROAD, SUITE 150
CAMARILLO, CALIFORNIA

1203 FLYNN ROAD, SUITE 240, CAMARILLO, CALIFORNIA 93012
TELEPHONE: 805/384-9500
WWW.EQUITYCOMMERCIAL.COM

EQUITY
COMMERCIAL
REAL ESTATE SERVICES, INC.