

# Industrial For Lease: 2697 Lavery Ct, Bldg B

2697 Lavery Ct, Bldg B, Unit 12-14, Newbury Park, CA 91320

Listing ID: **22598401**  
 Status: **Available**  
 Property Type: **Industrial**  
 Space Type: **Industrial**  
 Total Available: **6,408 SF**  
 Contiguous: **6,408 SF**  
 Min Divisible:  
 Lease Rate: **\$1.29 Monthly/SF**  
 Base Monthly Rate: **\$8,266 Monthly**  
 Lease Type: **Gross**



## Overview/Comments

Newly-Renovated Industrial Unit, Brand New Ground-Up Interior Improvements Large Reception Area/Showroom, Conference Room Two Private Offices, Coffee Bar, Two Restrooms Up to Three Loading Doors Possible Gross Rate, No CAM Fees

## General Information

Tax ID/APN:	<b>667-0-140-055</b>	Class of Space:	<b>Class C</b>
Office Type:	<b>Warehouse/Office</b>	Gross Building Area:	<b>23,750 SF</b>
Zoning:	<b>M1</b>	Building/Unit Size (RSF):	<b>22,864 SF</b>
Building Name:	<b>2697 Lavery Ct, Bldg B</b>	Usable Size:	<b>23,750 SF</b>

## Available Space

Floor/Suite:	<b>1 / 12-14</b>	Date Available:	<b>Now</b>
Space Available:	<b>6,408 SF</b>	Lease Rate:	<b>\$15.48 Annual/SF</b>
Minimum Divisible:		Lease Type:	<b>Gross</b>
Maximum Contiguous:	<b>6,408 SF</b>	Parking Total:	<b>13</b>
Space Type:	<b>Direct</b>	Parking Ratio:	<b>2.0</b>

## Building Related

Total Number of Buildings:	<b>3</b>	Elevators Present:	
Number of Stories:	<b>1</b>	Elevators Total:	
Typical SF / Floor:	<b>22,864 SF</b>	Sprinklers:	<b>Yes</b>
Year Built:	<b>1979</b>	Parking Ratio:	<b>2:1,000</b>
Year Renovated:		Parking Total:	<b>48</b>
Construction:	<b>Tiltwall</b>		

## Land Related

Zoning:	<b>M1</b>	Sewer Type:	
Water Service:		Land Area SF:	<b>198,634 SF</b>

**Kent Pierce**  
 kent@equitycommercial.com  
 805-384-9500

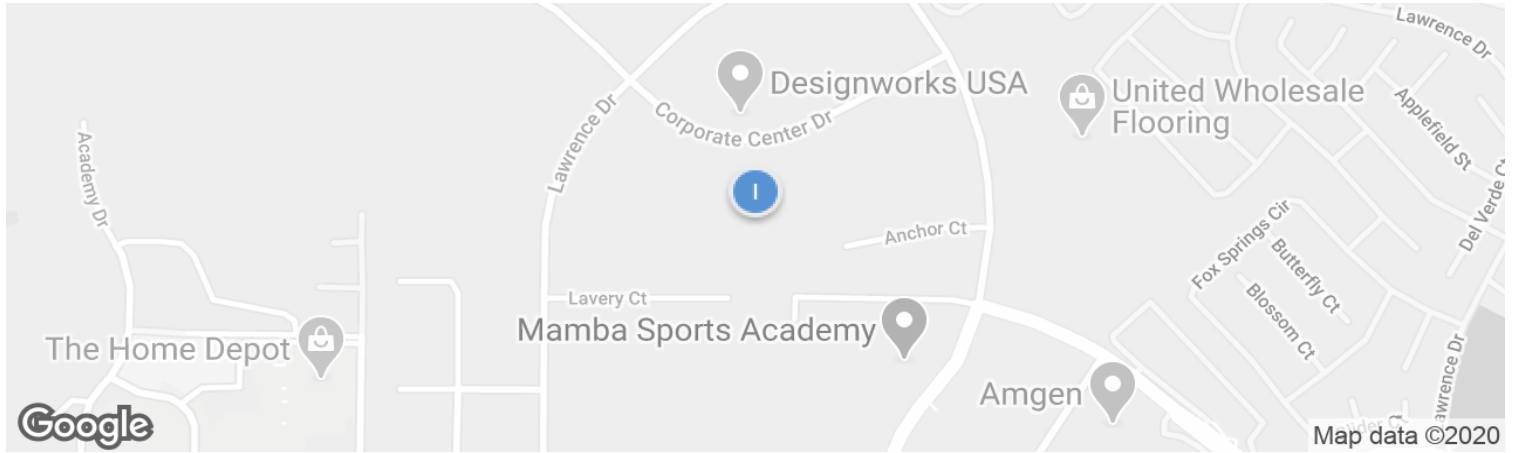
**AIRCRE**  
 Powered by: Catylist

3/24/2020

**Location**

Address: **2697 Lavery Ct, Unit 12-14 Newbury Park, CA 91320**

County: **Ventura**



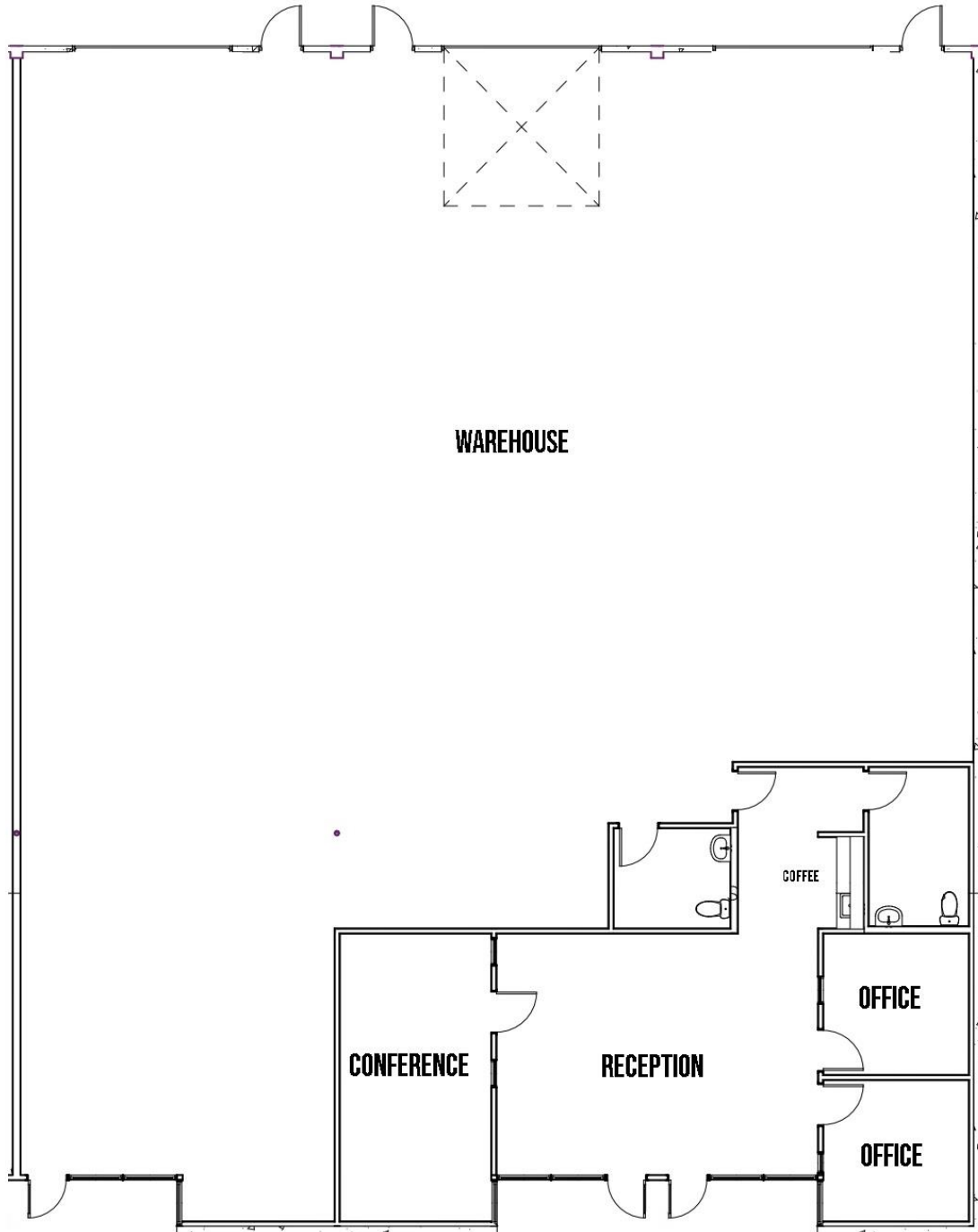
**Property Contacts**

**Kent Pierce**  
805-384-9500  
kent@equitycommercial.com

**Kent Pierce**  
kent@equitycommercial.com  
805-384-9500



# FLOORPLAN



2697 LAVERY COURT, UNITS 12-14  
NEWBURY PARK, CALIFORNIA

1203 FLYNN ROAD, SUITE 240, CAMARILLO, CALIFORNIA 93012  
TELEPHONE: 805/384-9500  
WWW.EQUITYCOMMERCIAL.COM

**EQUITY**  
**COMMERCIAL**  
REAL ESTATE SERVICES, INC.